

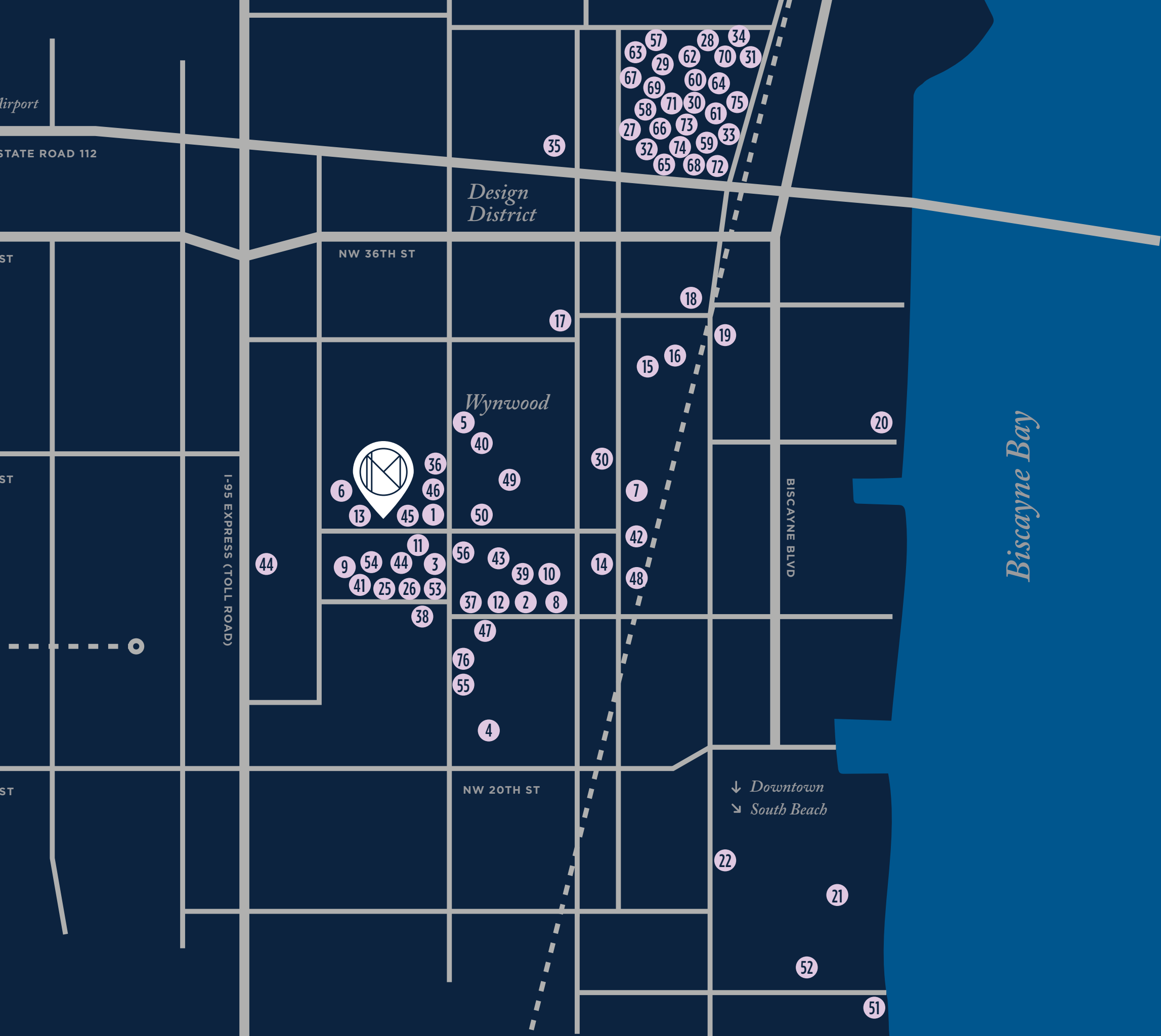


NO MAD

RESIDENCES
WYNWOOD



*Welcome to the first-ever
NoMad Residences,
now at home in Miami's
vibrant Wynwood*



DINE

- ★

1

Kyu

2

1-800-Lucky

3

Coyo Taco

4

Astra

5

Bakan

6

Momosan Wynwood

7

Doma

8

Mayami Mexicantina

★

9

Doya

10

Three & No. 3 Social

11

Uchi

★

12

Butcher Shop Beer Garden

13

Hidden

14

Back Door Monkey

15

Negroni Bistro & Sushi Bar

16

Sugarcane Raw Bar Grill

17

Prohibition Restaurant and Speakeasy

18

Tap 42 Craft Kitchen & Bar

19

Lagniappe

20

Amara at Paraiso

21

Pura Vida Edgewater

22

Mignonette Downtown

23

Baccarat Boutique Bbar & Lounge

★

24

Cote

★

25

Buya Izakaya + Yakitori

★

26

Jattō

27

Swan

28

Okami

★

29

Michael's Genuine

★

30

Hiyakawa Miami

31

L'Atelier de Joel Robuchon

32

Pura Vida Design District

33

MIA Market

★

34

Mandolin Aegean Bistro

35

Harry's Pizzeria

★

36

Zak the Baker

37

Pastis Miami

DRINK

38

El Patio Wynwood

39

Racket

40

Brick

41

SHOTS

42

Cerveceria La Tropical

43

The Dirty Rabbit Wynwood

44

Le Coqtail by Le Chick

45

Wynwood Brewing Company

DISCOVER

46

Wynwood Walls

47

Museum of Graffiti

48

Oasis Wynwood

49

Scoteria Wynwood

50

Miami Selfie Museum

51

Pérez Art Museum Miami

52

Adrienne Arsht Center

SHOP

53

Scotch & Soda

54

Boho Hunter Wynwood

55

Base

56

Le Labo

57

Bottega Veneta

58

Burberry

59

Bvlgari

60

Cartier

61

Dior

62

Fendi

63

Gucci

64

Hermes

65

Hublot

66

Louis Vuitton

67

Prada

68

Officine Panerai

69

Rolex

70

Salvatore Ferragamo

71

Tom Ford

72

Vacheron Constantin

73

Valentino

74

Van Cleef & Arpels

75

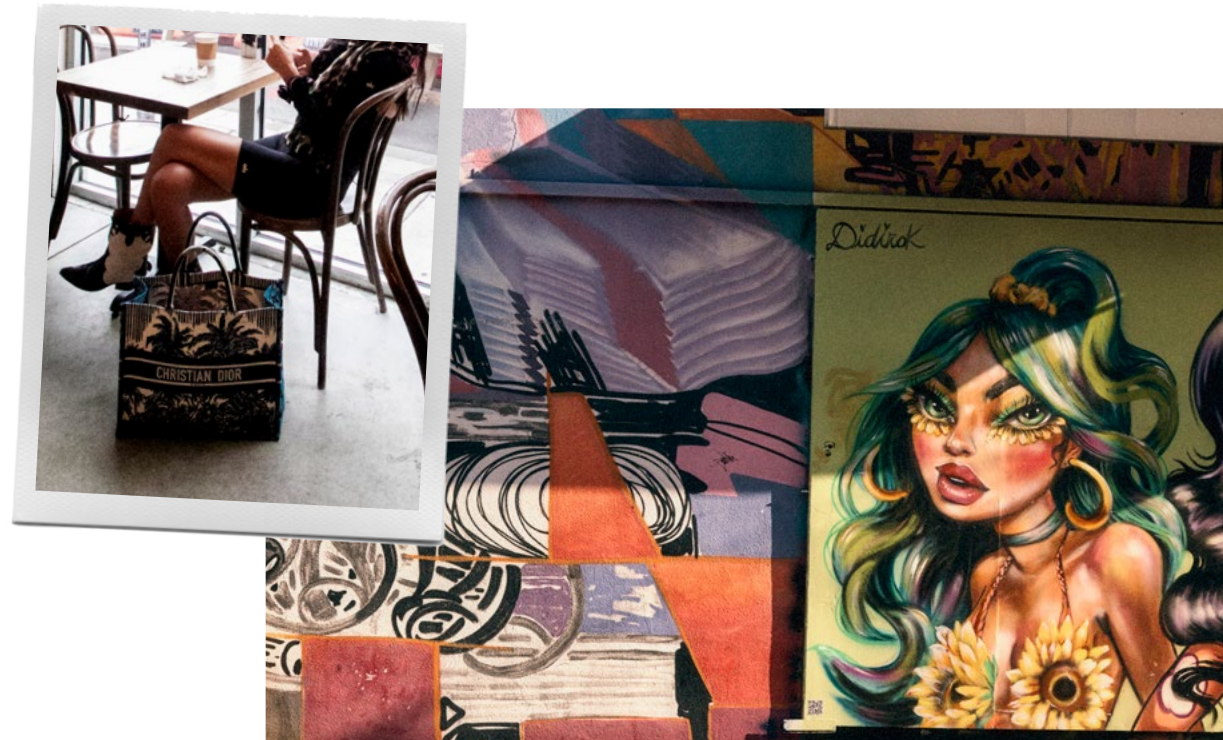
Versace

76

Aviator Nation

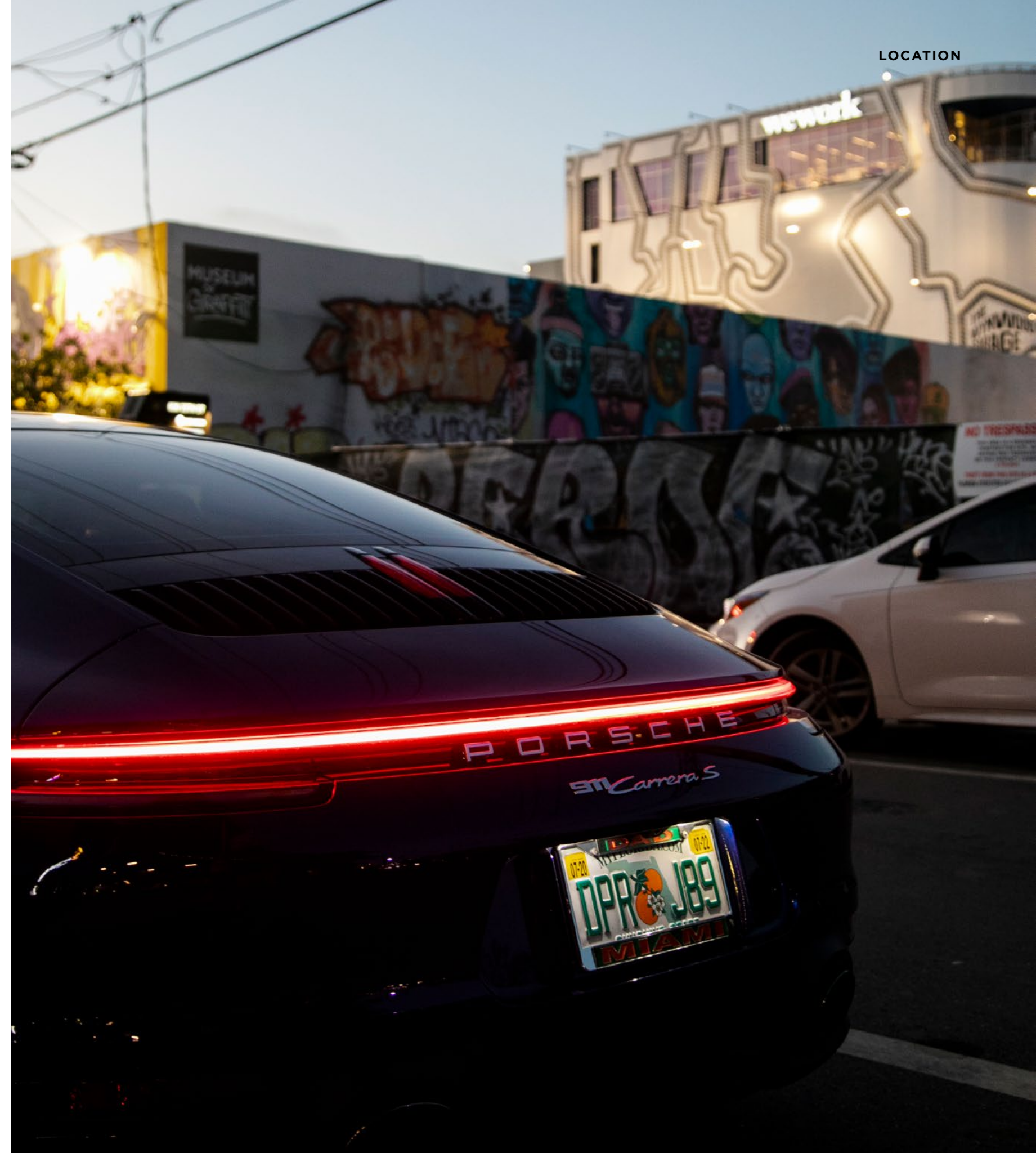
★ MICHELIN GUIDE 2022 INCLUSION

15



Wynwood is Miami's New Core

- \$552 million spending by out-of-town visitors
- 10 million+ out of town visitors in 2022
- 400+ businesses supporting 5,000+ jobs in Wynwood
- 20% of all public parking transactions citywide
- #1 tourist destination in South Florida
- 1 in 7 Miami MICHELIN Guide restaurants in Wynwood



MICHELIN Recognition

Seven of the restaurants listed in Miami’s first-ever MICHELIN guide are located in Wynwood—a renowned art scene that’s now becoming the culinary capital of the city: *MICHELIN Star* recipient Hiden, *Bib Gourmand* recipients Zak the Baker and Doya, as well as inclusions Hiyakawa Miami, KYU, Buya Izakaya + Yakitori, and Jattö. In 2023, Wynwood becomes the second home of beloved NYC institution and *MICHELIN Star* recipient Pastis.

Hiden

HIYAKAWA

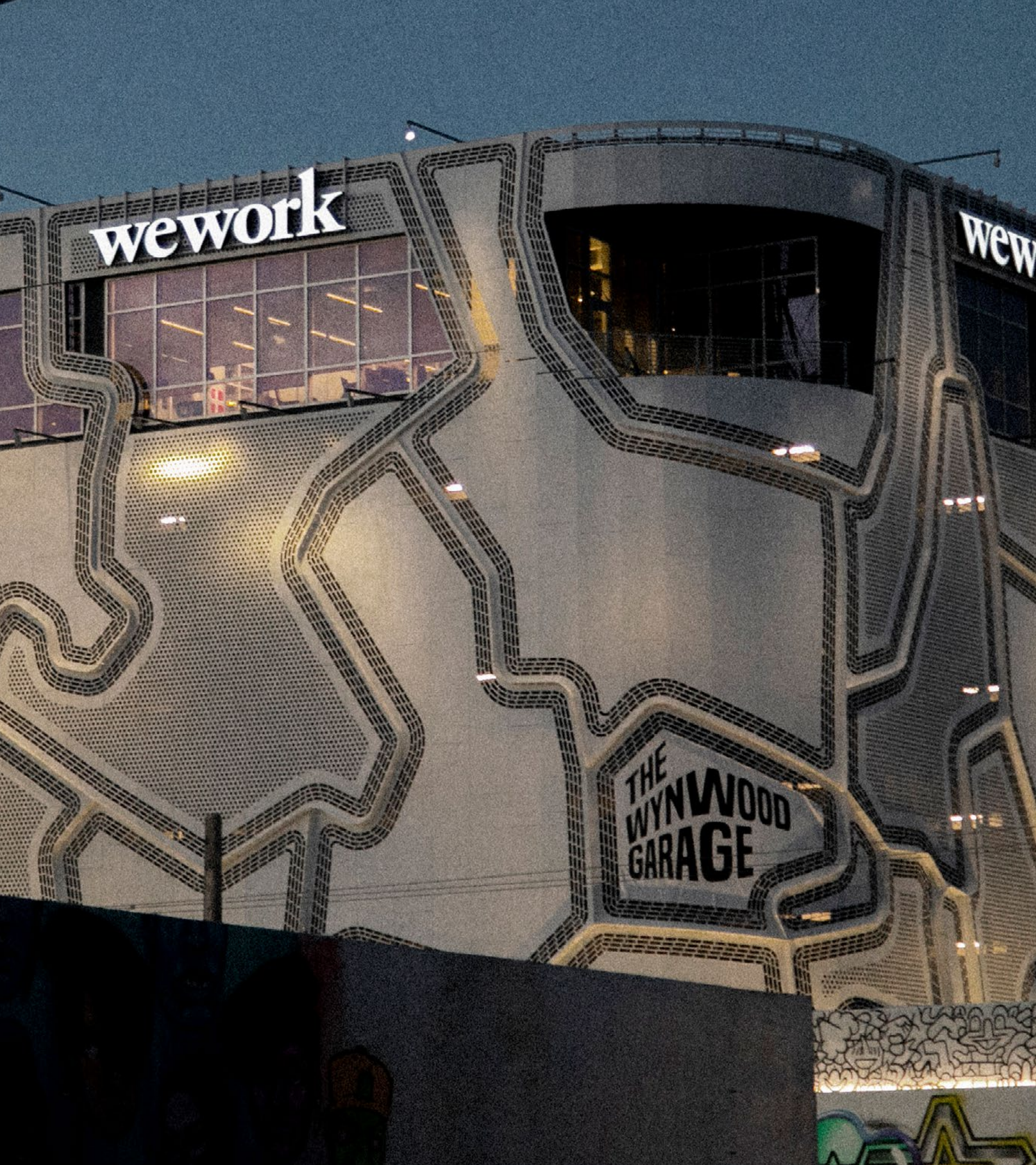
PASTIS



KYU

D O Y A





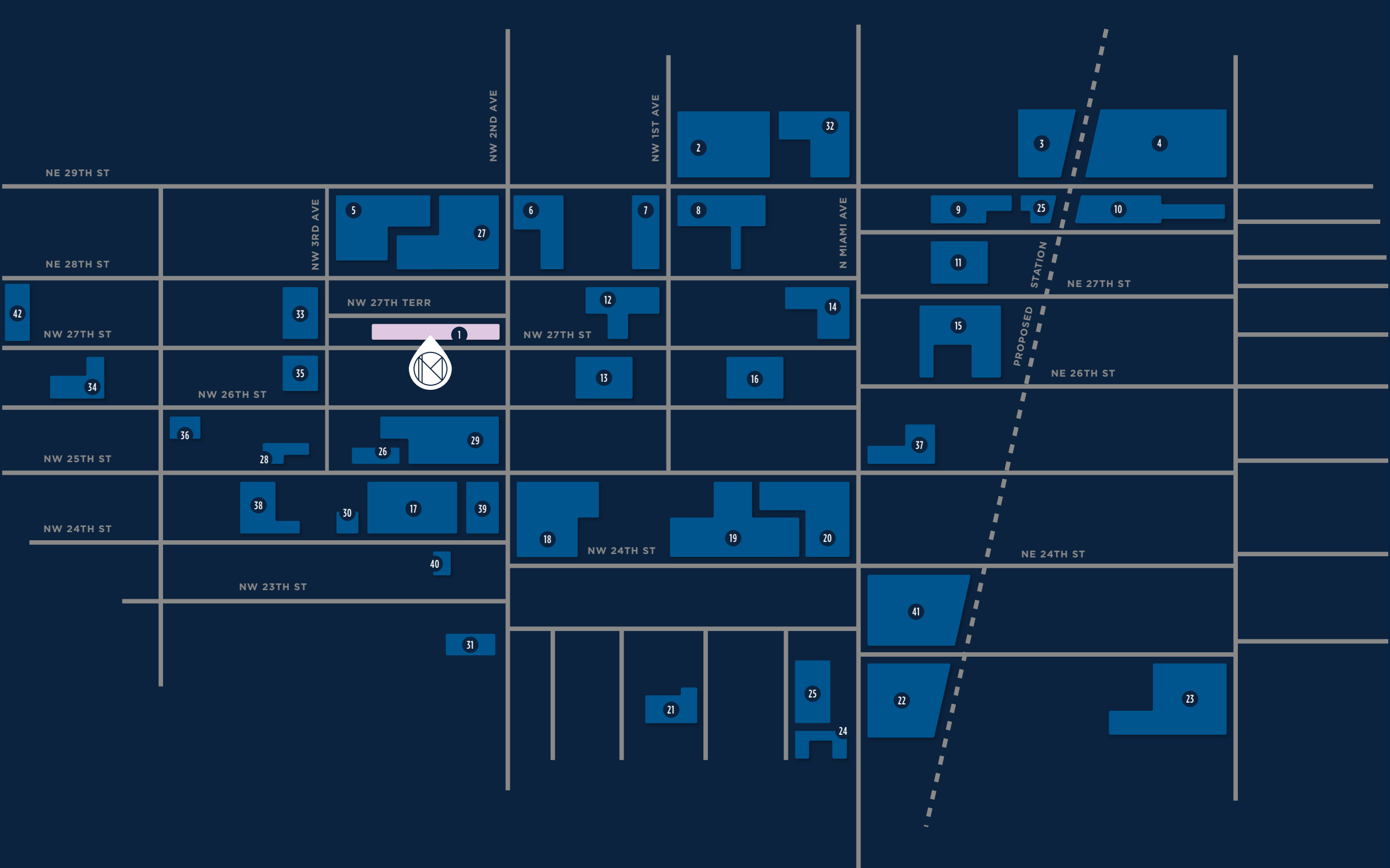
New Neighbors

Wynwood has welcomed a host of preeminent new office tenants across emerging tech, hedge fund management, institutional investors and global luxury brands; new neighbors include *WeWork, Spotify, Atomic, Founders Fund, Live Nation, Openstore, Slalom, Spaces, Field Trip, Industrious* and *Schonfeld*. Miami is ranked the 15th best startup ecosystem in the US and 30th worldwide, earning it the nickname “Silicon Valley of the South.”

17



Wynwood Development Map



LUXURY CONDOMINIUM

- 1 NoMad Residences Wynwood, *by Related Group*

RENTAL APARTMENTS

- 2 Wynwood Plaza, *by L&L Holding Co. & Oak Row Equities*
- 3 Courtland Midtown, *by Wood Partners*
- 4 AMLI Midtown, *by AMLI*
- 5 The Dorsey, *by Related Group*
- 6 The Collective Site, *by Gamma Real Estate*
- 7 29 Wyn, *by Related Group*
- 8 Artem Wynwood, *by Lennar*
- 9 Mohawk Wynwood, *by Rilea Group*
- 10 Midtown 29, *by AMLI*
- 11 Wynwood Station, *by Fifield*
- 12 W28, *by Kushner & Block*
- 13 W27, *by Kushner & Block*
- 14 Cynergi
- 15 Urby Wynwood, *by Urby & Brookfield*
- 16 Sentral, *by Iconiq Capital*
- 17 Wynwood 25, *by Related Group*
- 18 Society Wynwood, *by PMG*
- 19 AMLI Wynwood, *by AMLI*
- 20 LIVWRK Wynwood, *by LIVWRK*
- 21 The Wynhouse, *by Fisher Brothers*
- 22 Strata Wynwood, *by Rockpoint*
- 23 The Rider, *by Rilea Group*
- 24 WNWD21, *by Related Group*

HOTEL

- 25 Arlo Hotel
- 26 Moxy Hotel

RETAIL

- 27 Wynwood Walk - Bottle Blonde - Yoyoso - Puttshack
- 28 Walt Grace Vintage
- 29 Billionaire Boys Club
- 30 SoHo House Pool
- 31 Wynwood Market Place

OFFICE

- 32 Gateway at Wynwood
- 33 The Wynwood Building
- 34 545 Wyn
PricewaterhouseCoopers
- 35 Wynwood Garage
WeWork
- 36 The Lab Miami
- 37 The Printshop
Waveslabs Fintual
- 38 Core Wynwood
- 39 Annex
Founders Fund - Openstore - Atomic
- 40 Cube Wynwood
Northeastern University - Shaolin - Grendene
Schondels Spaces - Blockchain.com
- 41 Spotify HQ
- 42 LYNQ



1 **NOMAD RESIDENCES WYNWOOD**
Related Group
329 units



2 **WYNWOOD PLAZA**
by L&L Holding Co. & Oak Row Equities
509 units



3 **COURTLAND MIDTOWN**
Wood Partners
387 units



4 **AMLI MIDTOWN**
AMLI
719 units



5 **THE DORSEY**
Related Group
306 units



6 **THE COLLECTIVE SITE**
Gamma Real Estate
214 units



7 **29 WYN**
Related Group
248 units



8 **ARTEM WYNWOOD**
Lennar
189 units



9 **MOHAWK WYNWOOD**
Rilea Group
225 units



10 **MIDTOWN 29**
AMLI
309 units



11 **WYNWOOD STATION**
Fifield
210 units



12 **W28**
Kushner & Block
152 units



13 **W27**
Kushner & Block
152 units



14 **CYNERGI**

100 units



15 **URBY WYNWOOD**
Urby & Brookfield
289 units



16 **SENTRAL**
Iconiq Capital
175 units



17 **WYNWOOD 25**
Related Group & East End
289 units



18 **SOCIETY WYNWOOD**
PMG
326 units



19 **AMLI WYNWOOD**
AMLI
316 units



20 **LIVWRK WYNWOOD**
LIVWRK
420 units



21 **THE WYNHOUSE**
Fisher Brothers
308 units



22 **STRATA WYNWOOD**
Rockpoint
257 units



23 **THE RIDER**
Rilea Group
131 units



24 **WNWD21**
Related Group
304 units

WYNWOOD OFFICE PIPELINE



32 **GATEWAY AT WYNWOOD**
R&B
200,000 SF



33 **WYNWOOD BUILDING**
Goldman Properties
45,000 SF



34 **545 WYN - PRICEWATERHOUSECOOPERS**
Sterling Bay
300,000 SF



35 **WYNWOOD GARAGE - WEWORK**
31,000 SF



36 **THE LAB MIAMI**
10,000 SF



37 **THE PRINTSHOP - WAVESLAB FINTUAL**
Link & Jameson
17,000 SF



38 **CORE WYNWOOD**
Goldman Properties
115,000 SF



39 **ANNEX - FOUNDERS FUND - OPENSTORE**
Brick & Timber
60,000 SF



40 **CUBE WYNWOOD - SHAOLIN - SCHONDELS SPACES**
LNDMRK & Tricera
80,000 SF



41 **SPOTIFY HQ**
20,000 SF



42 **LYNQ**
Tricap

NOMAD RESIDENCES WYNWOOD





*Features
and Amenities
Impeccably Curated in
Every Element*



Artist's conceptual rendering.

Building Amenities

- Globally sought-after NoMad curation and design
- Rooftop NoMad Restaurant and Bar with separate elevator
- Inspired, impeccable landscaping
- Full-service rooftop pool, sun deck and cabanas
- 24-hour concierge and building security
- 24-hour valet parking and in-building garage
- Two expansive lobbies and numerous retail spaces
- Top-tier fitness and wellness center, with dedicated outdoor fitness lawns
- Grilling area and outdoor cinema
- Extensive library and co-working spaces
- Bicycle storage
- Dedicated check-in services
- In-residence cuisine delivered on demand
- Privately controlled elevator access
- Smart climate control
- Private storage on residential floors
- Pet-friendly

LOBBY



FITNESS











*The Residences
Immersed in Style
and Character*

*Refreshing,
unexpected
and endlessly
inventive*

31





Artist's conceptual rendering; surrounding buildings and landmarks modified or omitted.

LIVING ROOM



LIVING ROOM



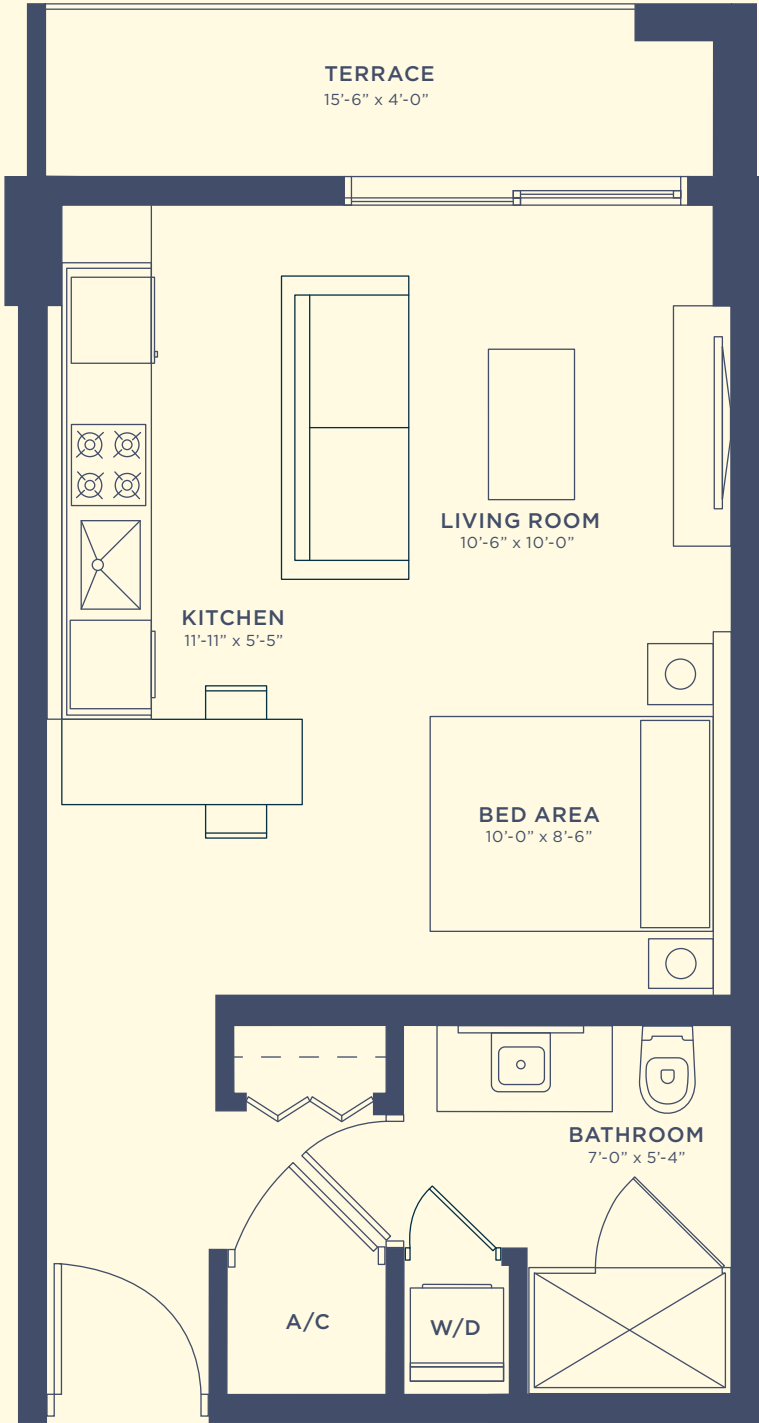








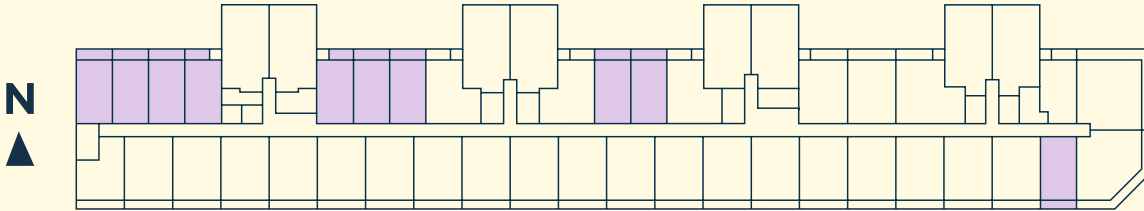
Floor Plans
Flexible, Spacious Layouts,
Filled with Natural Light

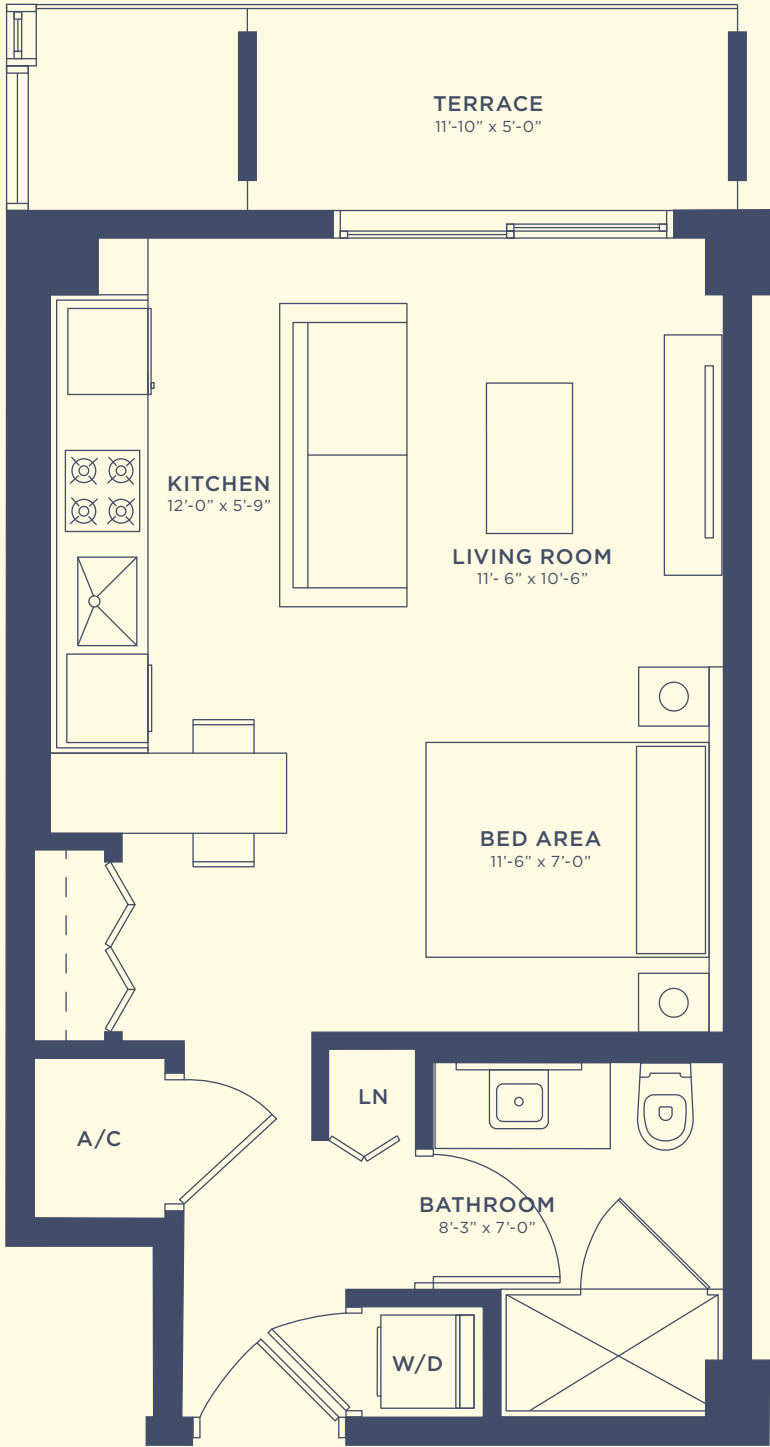


STUDIO TYPE A

Studio | 1 Bath

INTERIOR	479 SF / 45 M ²
TERRACE	62 SF / 6 M ²
TOTAL	541 SF / 50 M ²

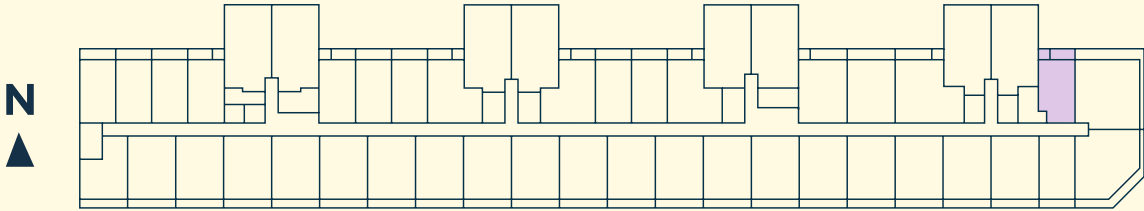


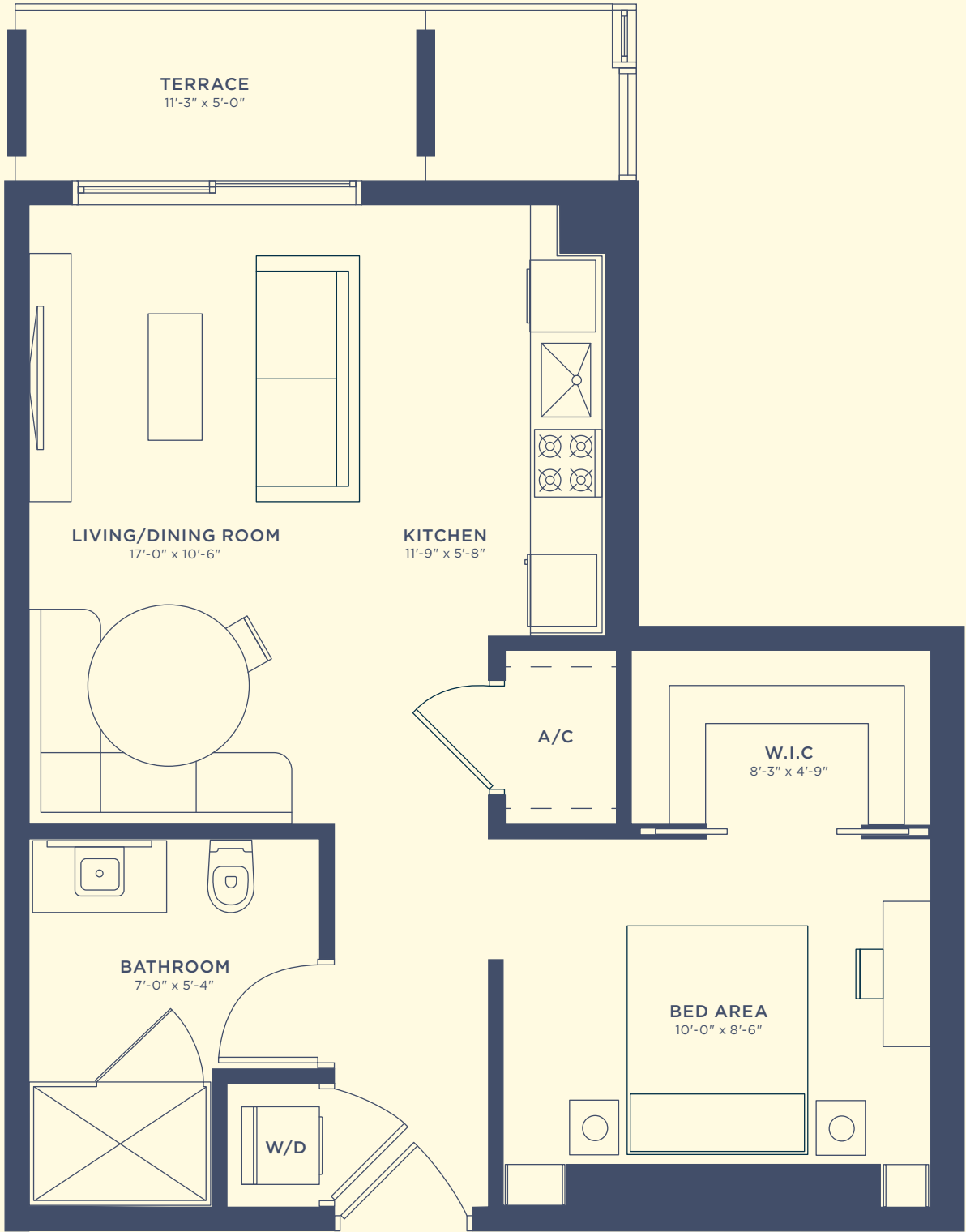


STUDIO TYPE A2

Studio | 1 Bath

INTERIOR	464 SF / 43 M ²
TERRACE	55 SF / 5 M ²
TOTAL	519 SF / 48 M ²

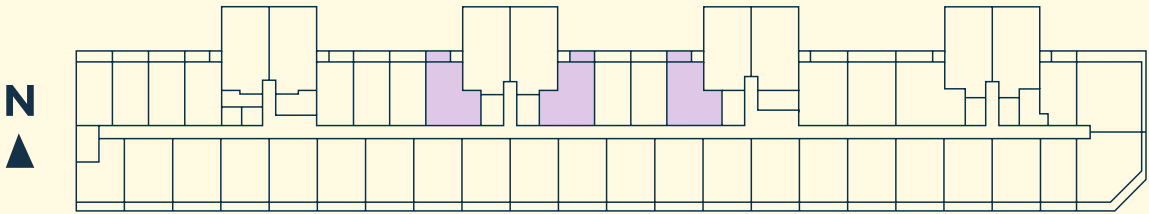


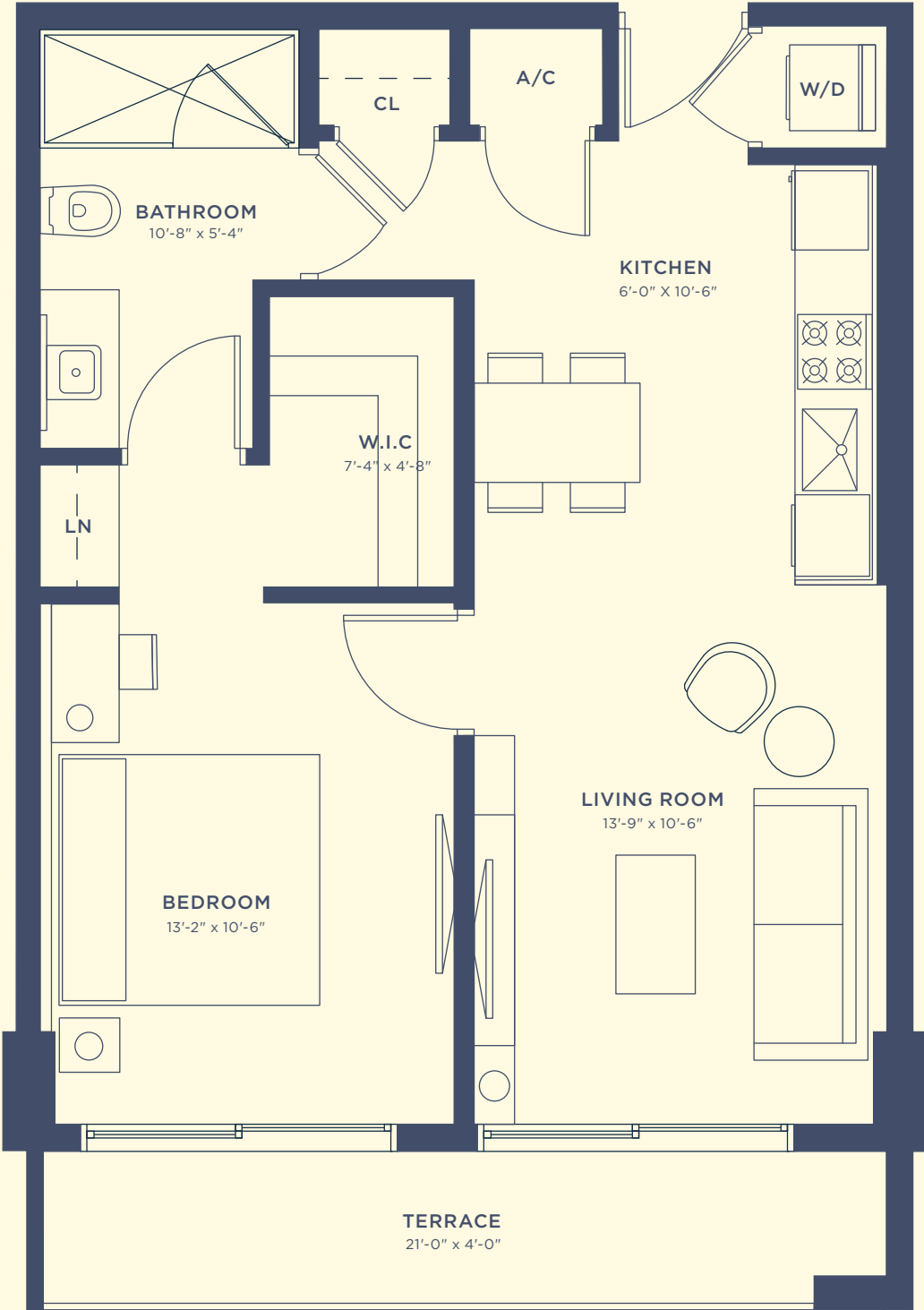


STUDIO TYPE B

Studio | 1 Bath

INTERIOR	624 SF / 58 M ²
TERRACE	54 SF / 6 M ²

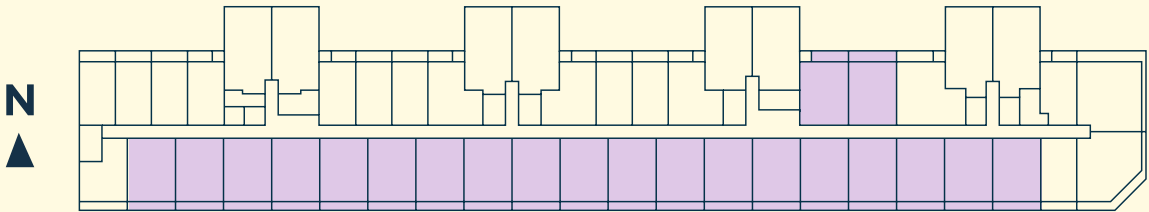


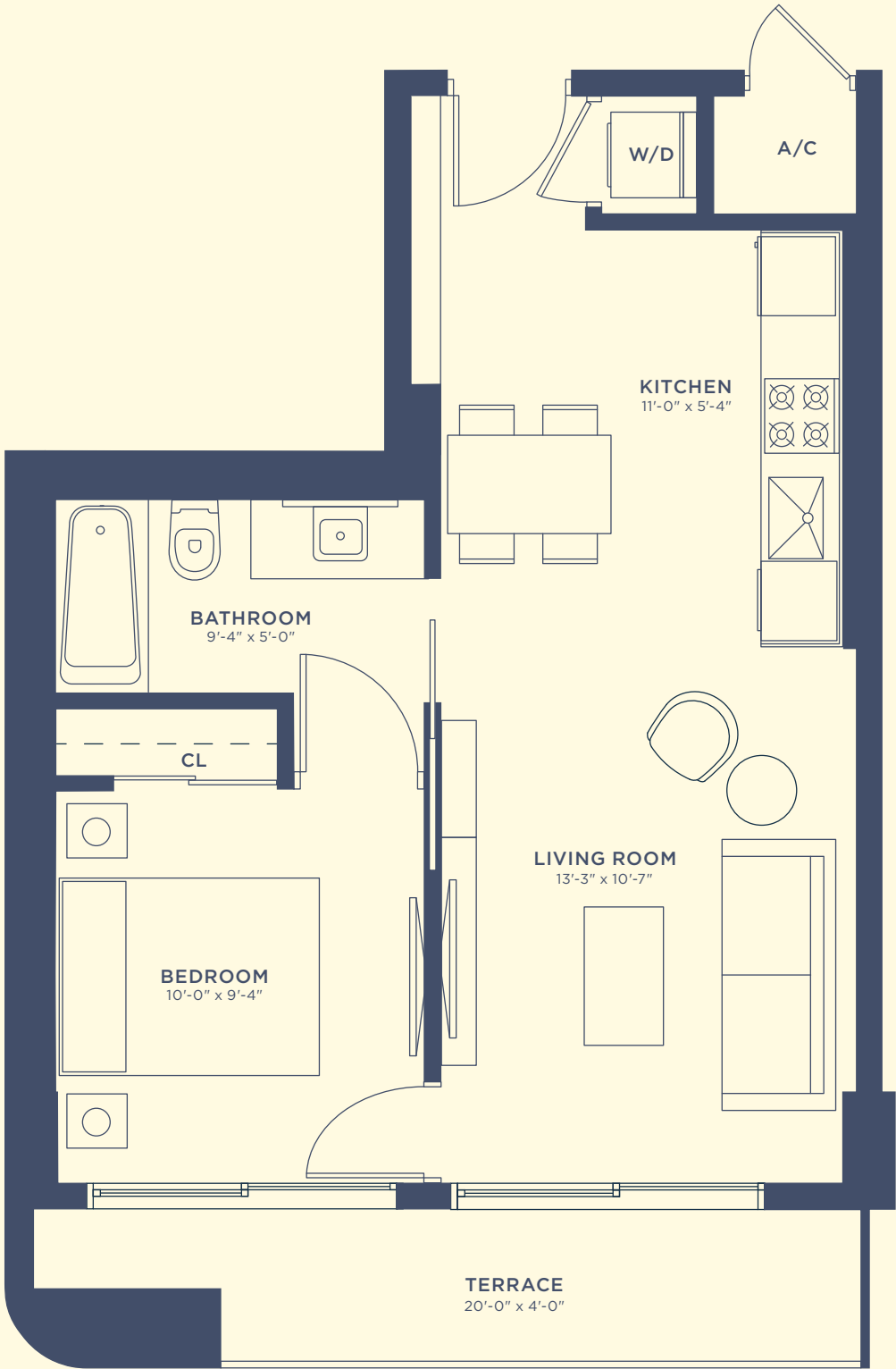


ONE BEDROOM TYPE A

1 Bed | 1 Bath

INTERIOR	638 SF / 59 M ²
TERRACE	82 SF / 8 M ²
TOTAL	720 SF / 67 M ²

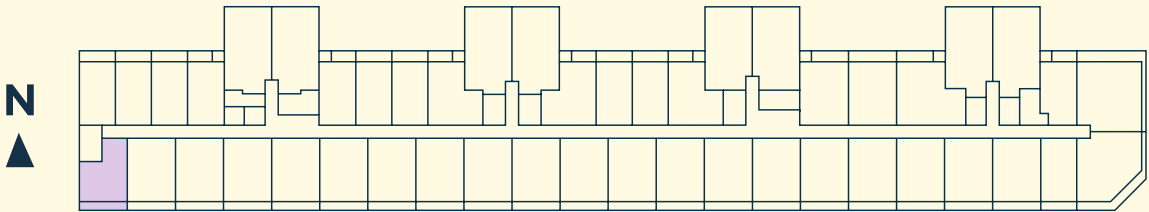


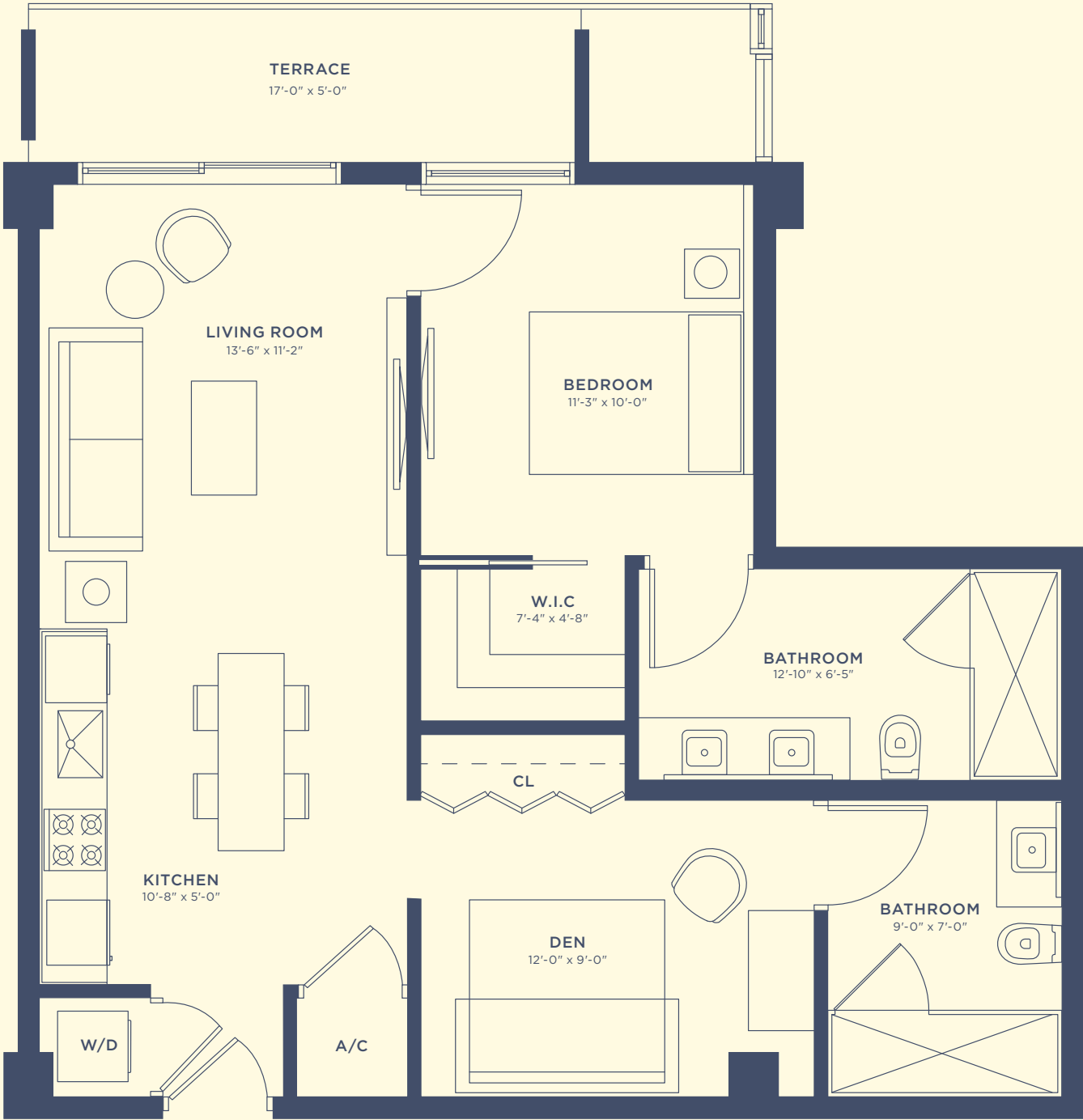


ONE BEDROOM TYPE B

1 Bed | 1 Bath

INTERIOR	528 SF / 49 M ²
TERRACE	75 SF / 7 M ²
TOTAL	603 SF / 56 M ²

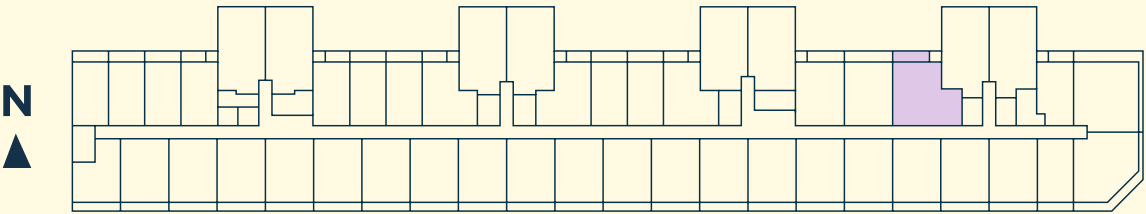


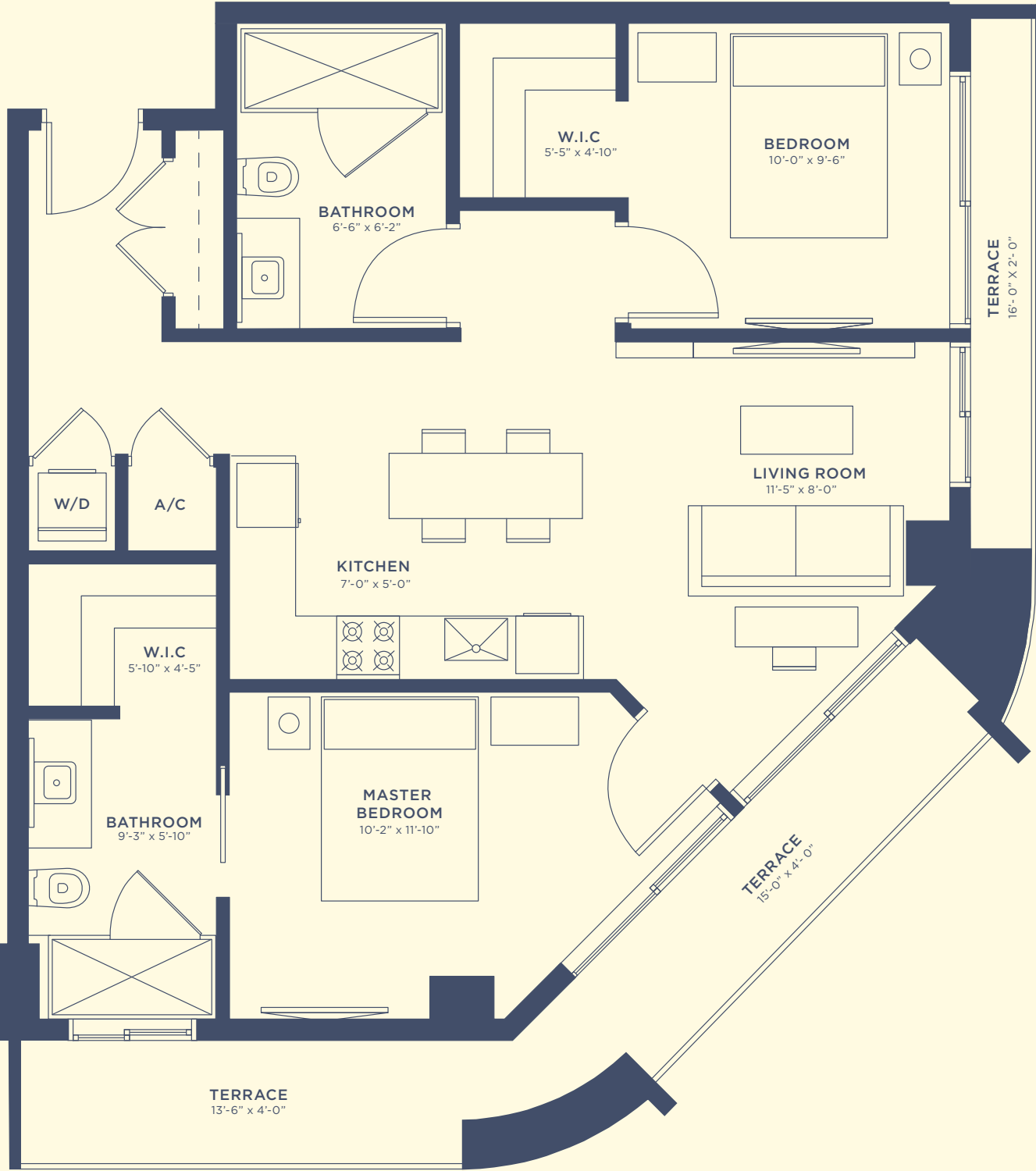


ONE BEDROOM TYPE C

1 Bed | 2 Bath + Den

INTERIOR	806 SF / 75 M ²
TERRACE	81 SF / 8 M ²
TOTAL	887 SF / 82 M ²

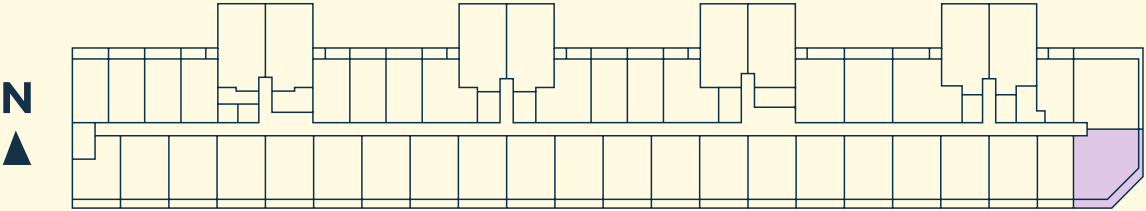




TWO BEDROOM TYPE A

2 Bed | 2 Bath

INTERIOR	830 SF / 77 M ²
TERRACE	161 SF / 15 M ²
TOTAL	991 SF / 92 M ²

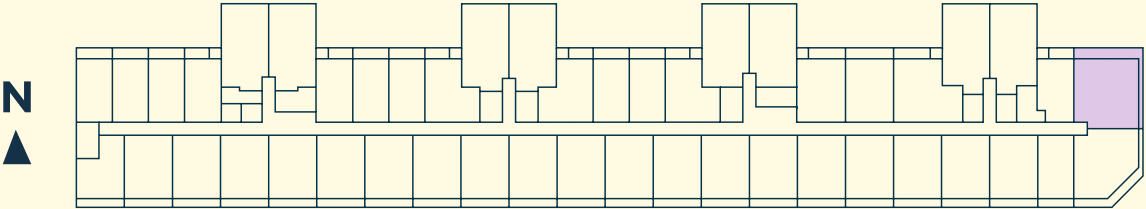


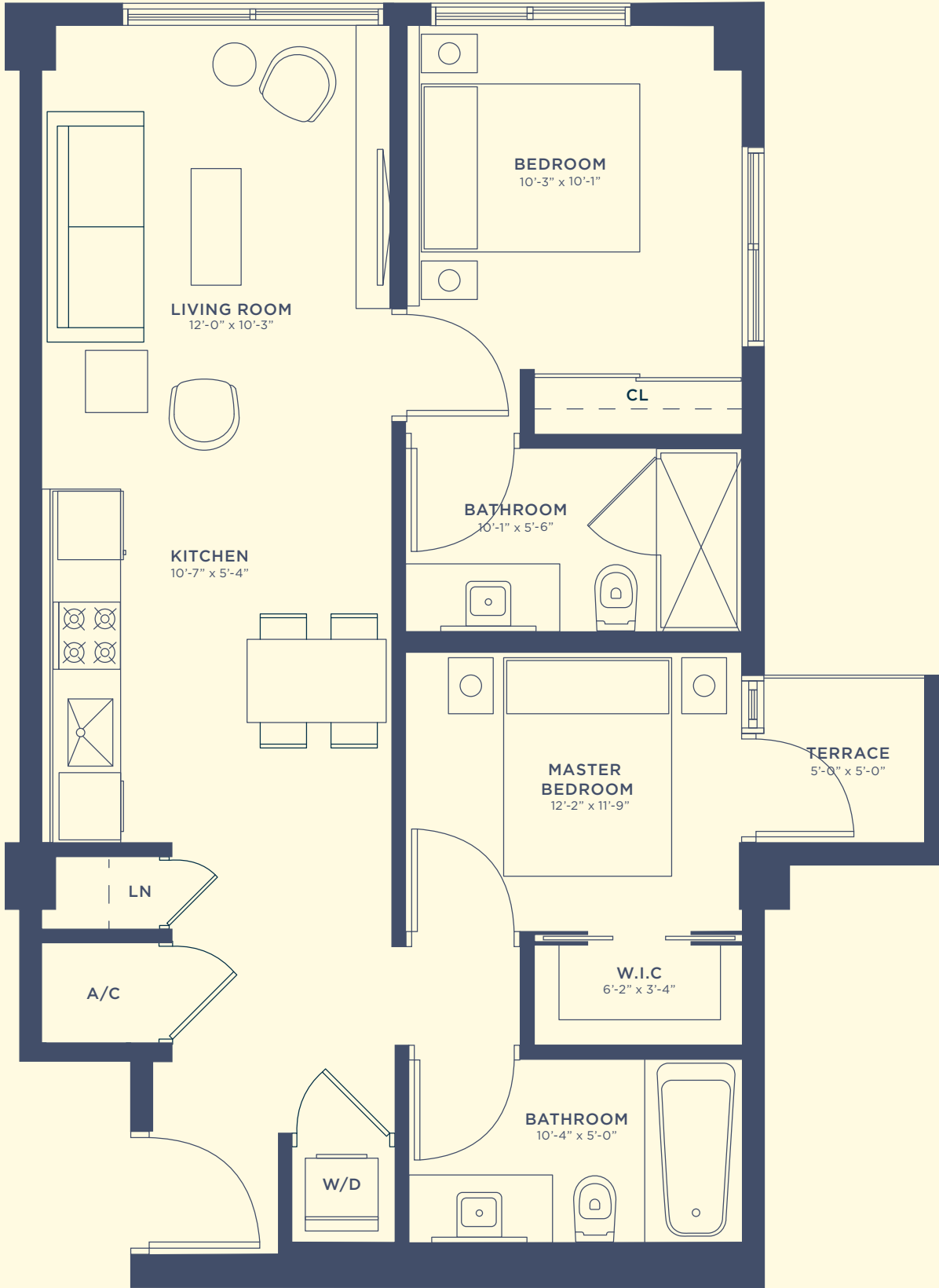


TWO BEDROOM TYPE B

2 Bed | 2 Bath

INTERIOR	931 SF / 86 M ²
TERRACE	195 SF / 18 M ²
TOTAL	1,126 SF / 105 M ²

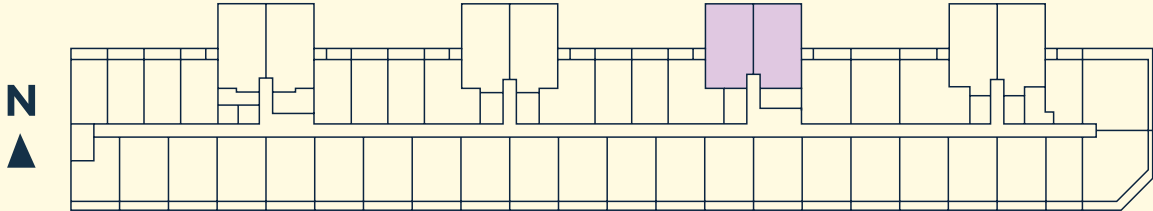


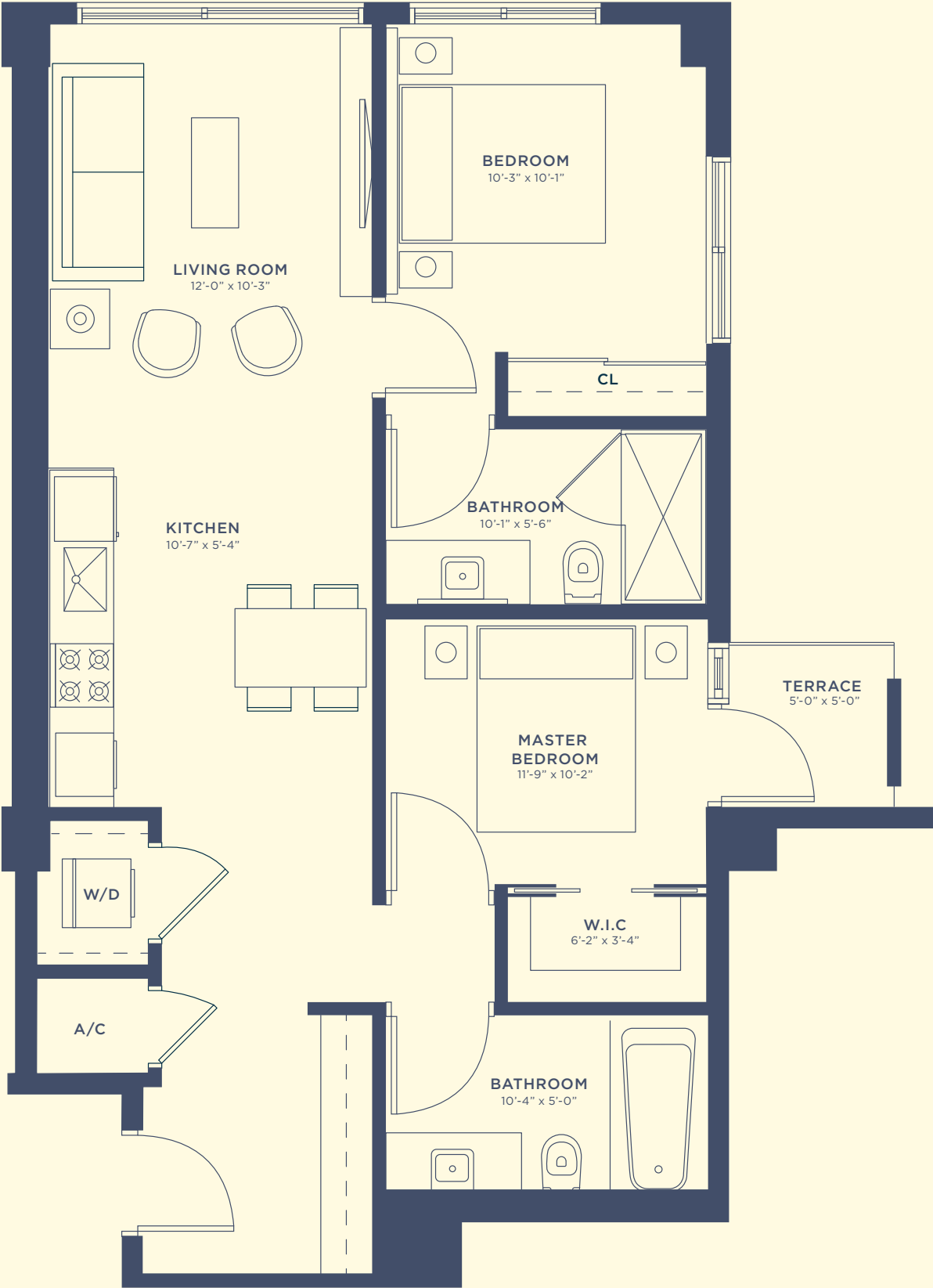


TWO BEDROOM TYPE C

2 Bed | 2 Bath

INTERIOR	804 SF / 75 M ²
TERRACE	25 SF / 2 M ²
TOTAL	829 SF / 77 M ²

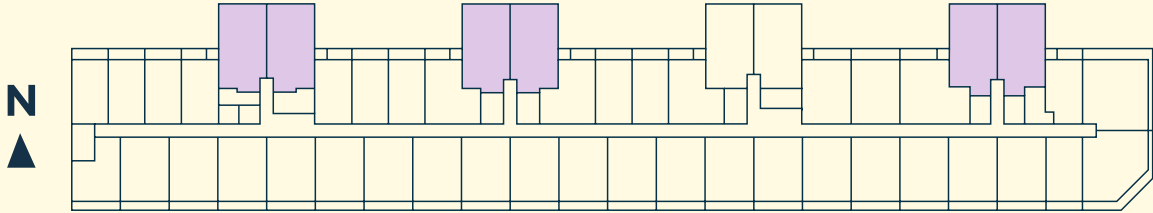




TWO BEDROOM TYPE C2

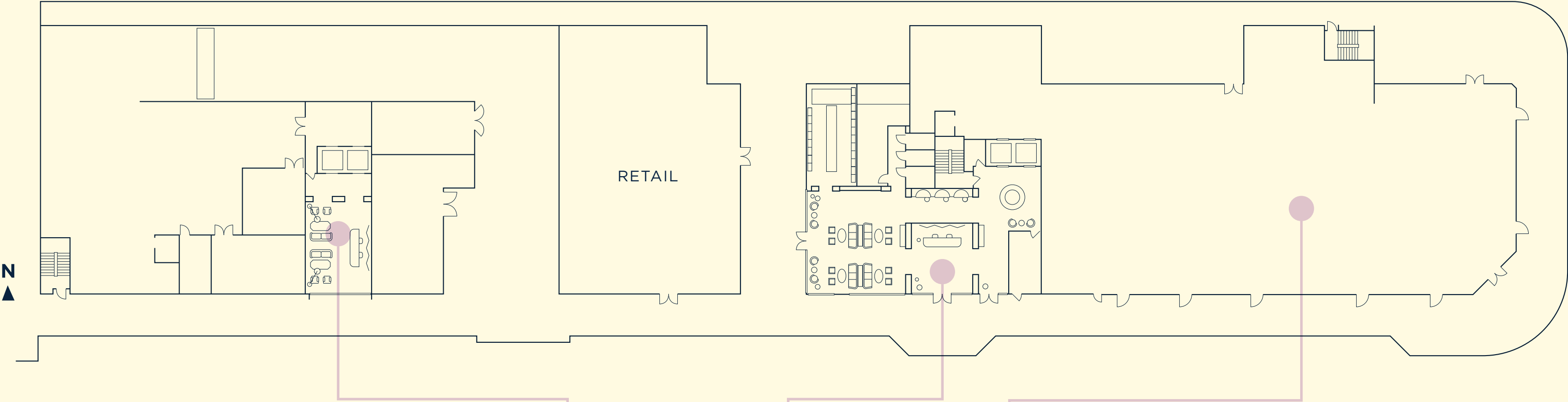
2 Bed | 2 Bath

INTERIOR	840 SF / 78 M ²
TERRACE	25 SF / 2 M ²
TOTAL	865 SF / 80 M ²



AMENITY SITE PLAN

Ground Floor



LOBBY 1



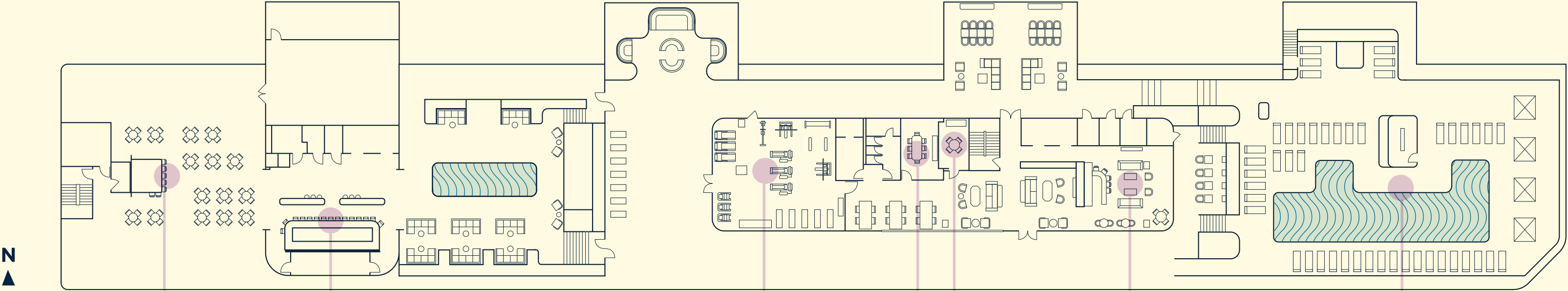
LOBBY 2



CASA TUA CUCINA

AMENITY SITE PLAN

Rooftop / Floor 9



GARDEN BAR



THE NOMAD BAR



FITNESS CENTER



CONFERENCE ROOM



SPEAKEASY



PARLOR



ROOFTOP POOL

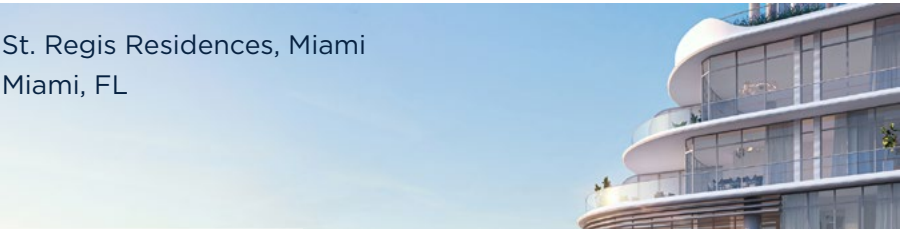


GARDEN BAR





Residences by Armani Casa,
Sunny Isles Beach, Florida



St. Regis Residences, Miami
Miami, FL



Jon Paul and Nicholas Pérez,
President and Senior Vice President

RELATED GROUP

Since 1979, *Related Group* has enhanced skylines with iconic developments characterized by innovative design, enduring quality and inclusive living.

Through groundbreaking partnerships with world-renowned architects, designers and artists, Related redefines urban environments on a global scale, fostering distinctive, dynamic communities and symbolic landmarks that have become sources of local pride.



David Edelstein, Principal

TRICAP

Tricap is a private equity real estate investor and developer with over three decades of success identifying and cultivating early-stage investment opportunities and opportunistic real estate transactions within the country's most sought-after markets.

The company has built a portfolio in excess of 3 million square feet, managing in excess of \$3 billion of high-profile and prominent assets across major metropolitan US markets.



Andrew Zobler,
Founder and CEO



Leo Robitschek,
Vice President of F&B

SYDELL GROUP

Founded by Andrew Zobler, *Sydell Group* is the creator of unique hotels rooted in their location and architecture.

Sydell's core expertise is in bringing together emerging and established talent from the worlds of design, food & beverage, art and hospitality to create hotels and restaurants that offer inspiration, comfort, graciousness of spirit and a deep sense of place.



Mount Parker Residences
Hong Kong



Raymond Fort, Designer

ARQUITECTONICA

Led by Principals Bernardo Fort-Brescia and Laurinda Spear, *Arquitectonica* continues to push the limits of design with its innovative use of materials, geometry, pattern and color to introduce a new brand of humanistic modern design to the world.

With offices in Miami, New York, Los Angeles, Paris, Hong Kong, Shanghai, Manila, Lima and Sao Paulo, *Arquitectonica* occupies a major presence on the international stage.

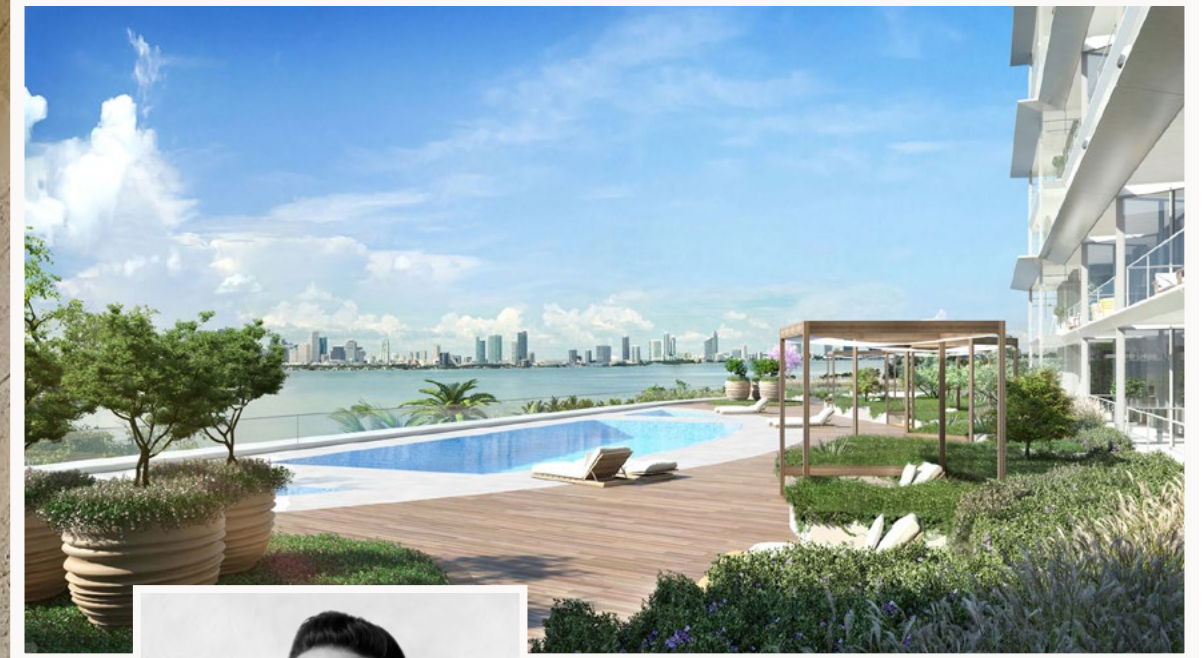


Allen Chan, Co-Founder
Anwar Mekhayech, Co-Founder
Matt Davis, Co-Founder

DESIGNAGENCY

DesignAgency an award-winning international design studio that draws on over two decades of experience in interior design, architecture, landscaping, strategic branding and visual communications. The studio was selected from among 20+ industry-leading firms for its human-centered, digital-first approach—resulting in a flawless balance of character and innovation that remains unmatched.

With studios in Toronto, Washington, D.C., Los Angeles and Barcelona, *DesignAgency* has established a renowned global presence, with notable projects including St. Regis Toronto, Soho House Toronto, Vice Media, Momofuku's Ssäm Bar, and The Ritz-Carlton Toronto.

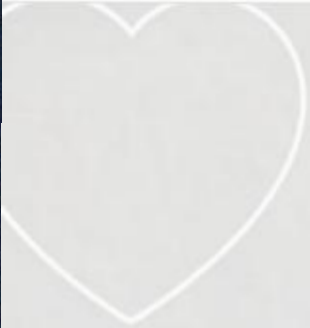


Andres Arcila,
Founding Principal

NATURALFICIAL

Naturalficial is a Miami-based landscape architecture and design practice, dedicated to the production of man-made built environments that reconnect us with nature, provide a setting for human activities and lift the human spirit.

Its portfolio is comprised of various project types and scales including urban interventions, hotels and high-end multi-family and single-family residences.



20+

years
OF EXPERIENCE

REAL ESTATE

PROFESSIONAL



#KimberlyKRealEstate

NoMAD

RESIDENCES
WYNWOOD