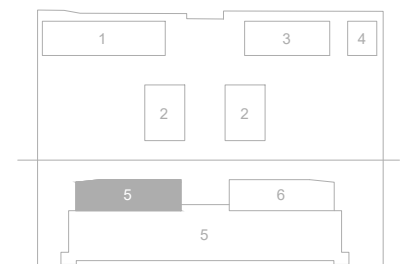


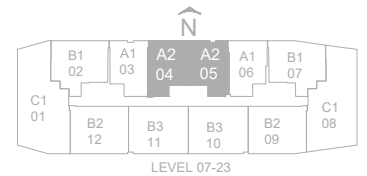
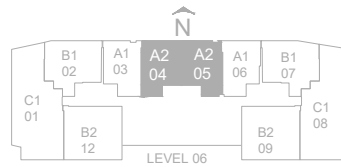
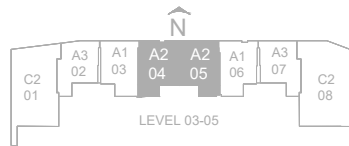
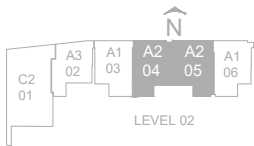
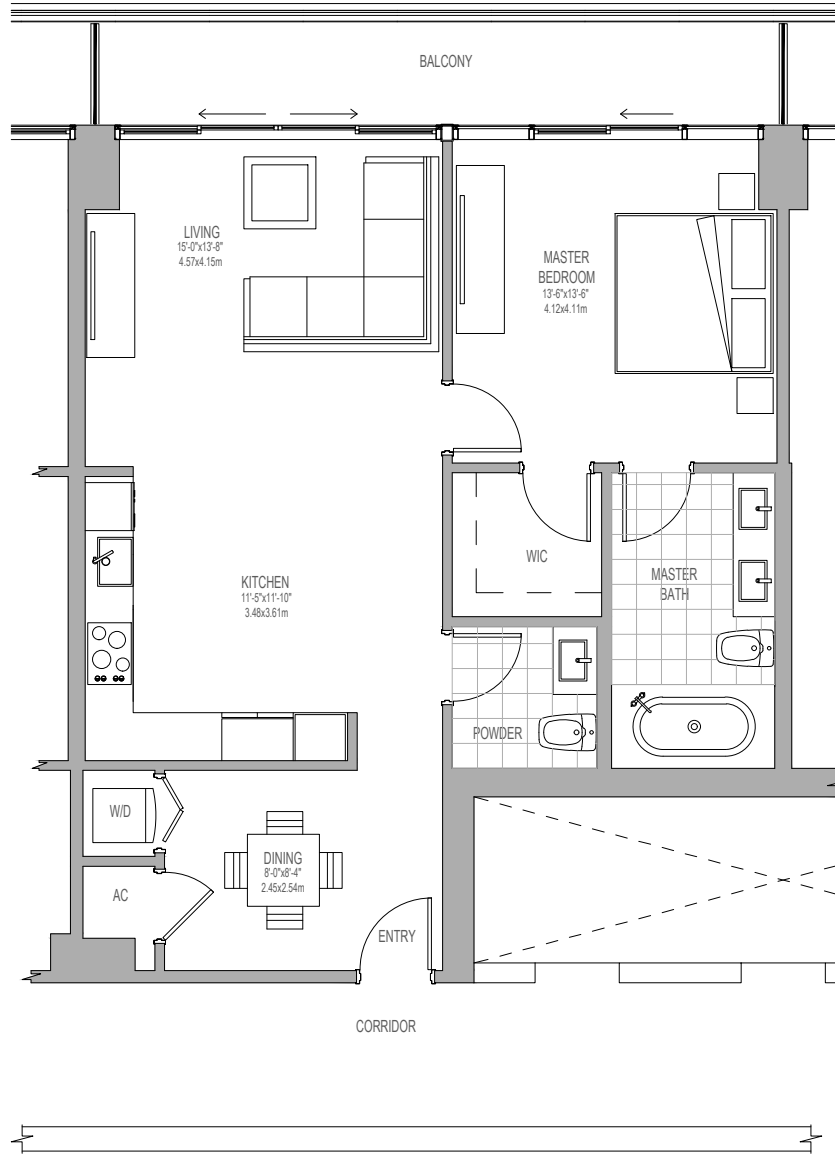
# UNIT A1

1 BEDROOM / 1.5 BATHS

INDOOR LIVING AREA 894 sq ft 83.05 sq m  
 OUTDOOR LIVING AREA 143 sq ft 13.29 sq m



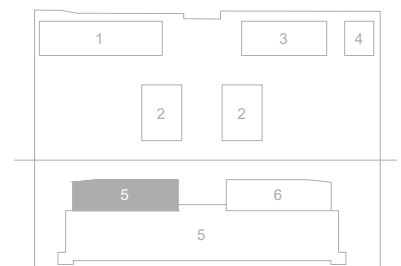
KEY PLAN



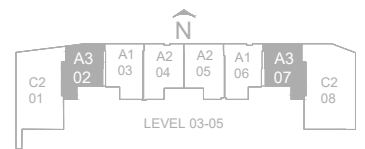
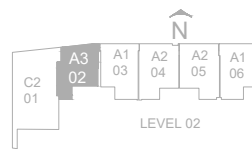
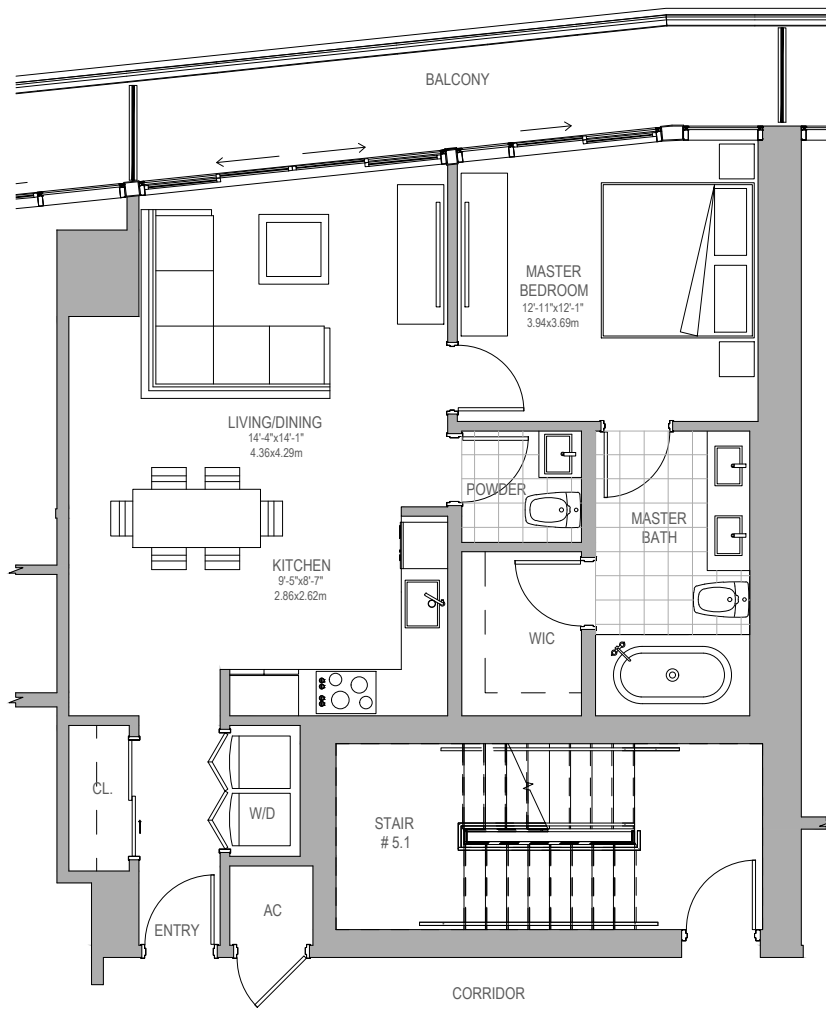
# UNIT A2

1 BEDROOM / 1.5 BATHS

INDOOR LIVING AREA 937 sq ft 87.0 sq m  
 OUTDOOR LIVING AREA 139 sq ft 12.9 sq m



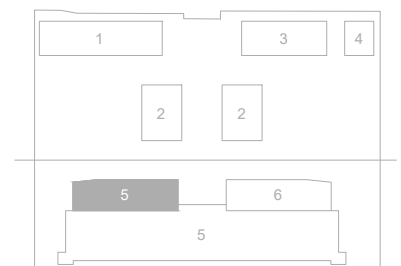
KEY PLAN

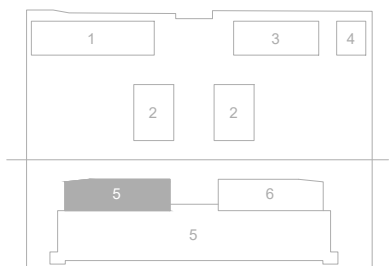
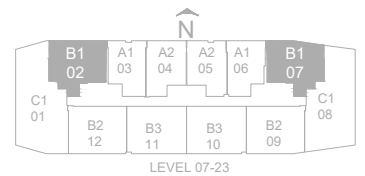
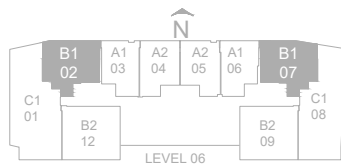
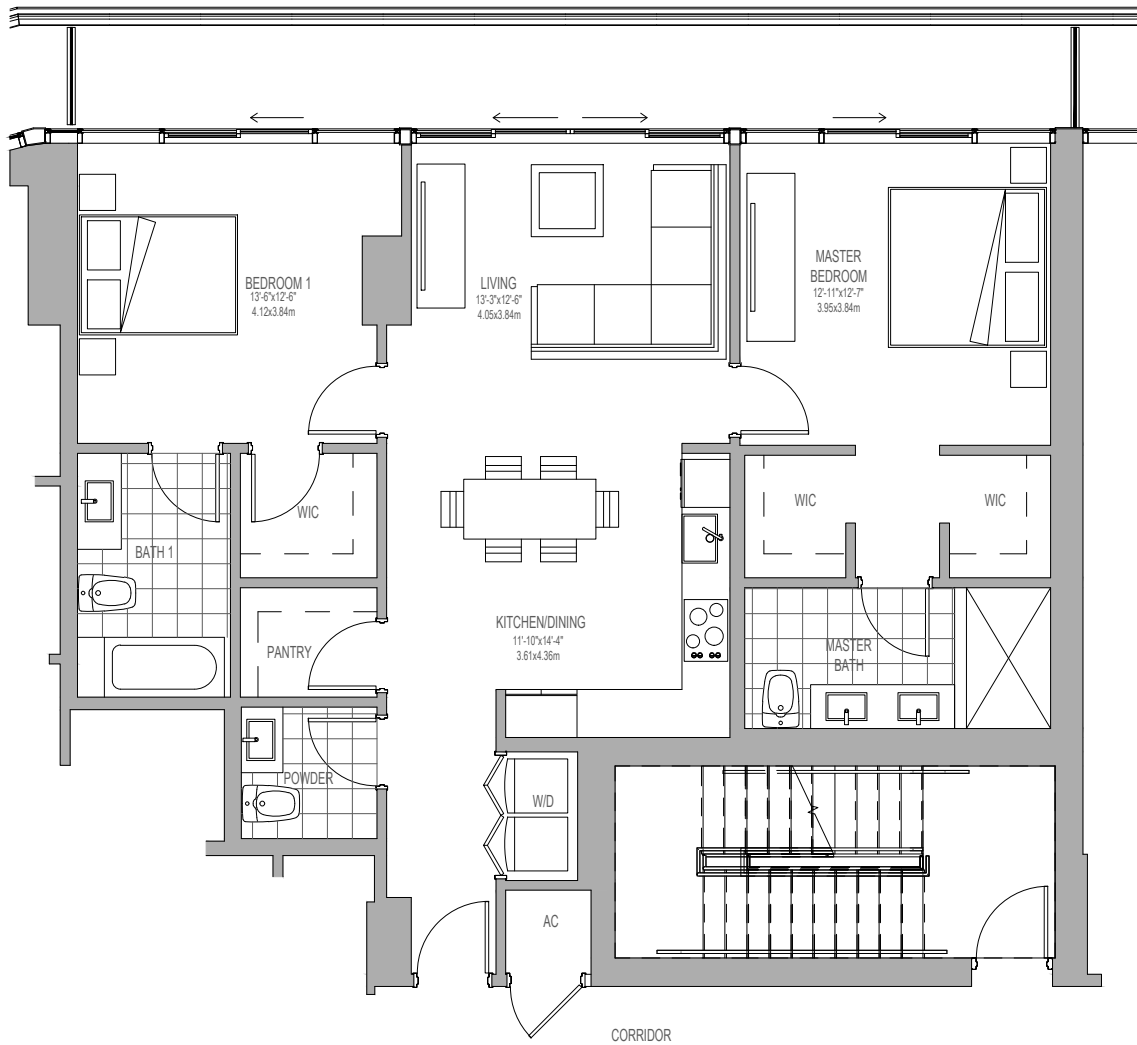


# UNIT A3

1 BEDROOM / 1.5 BATHS

INDOOR LIVING AREA 876 sq ft 81.38 sq m  
 OUTDOOR LIVING AREA 140 sq ft 13.01 sq m

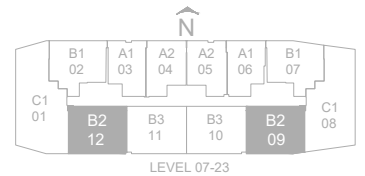
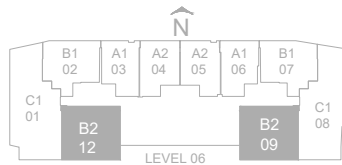
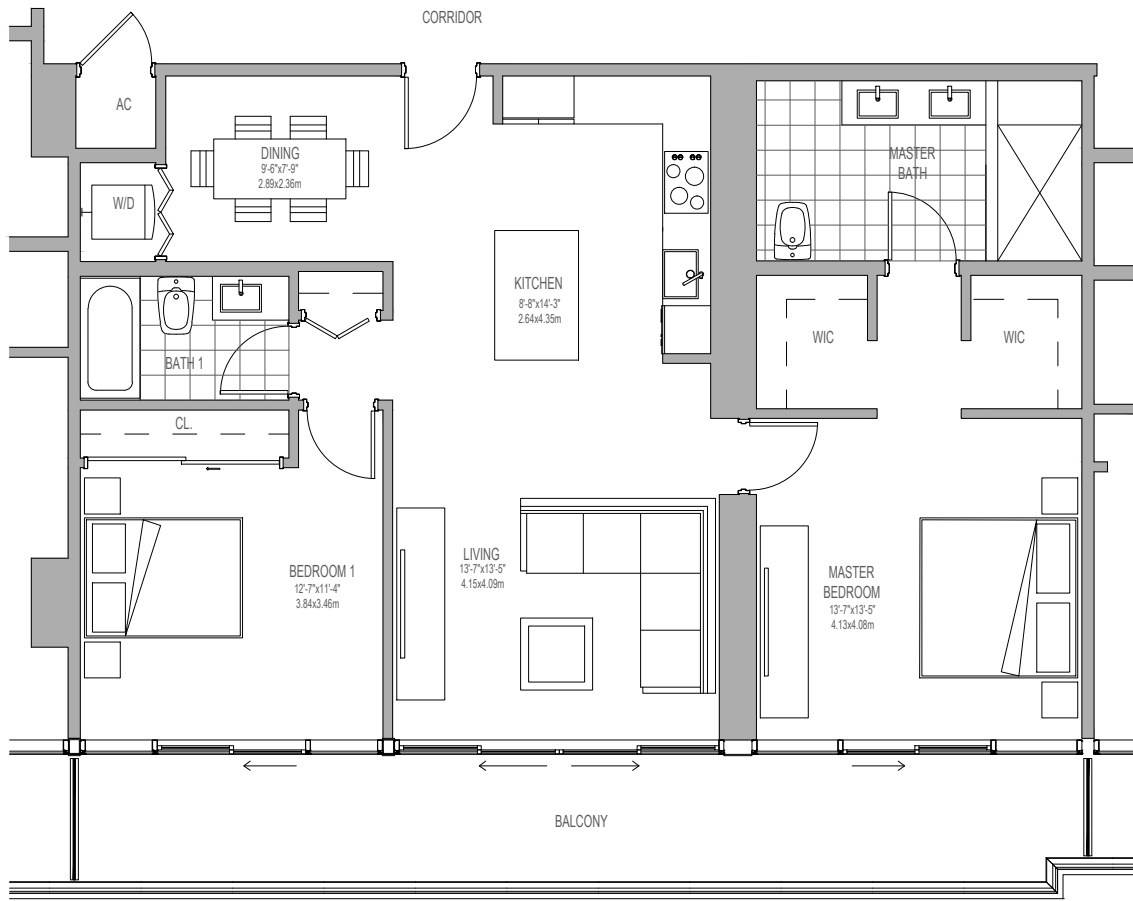




# UNIT B1

2 BEDROOM / 2.5 BATHS

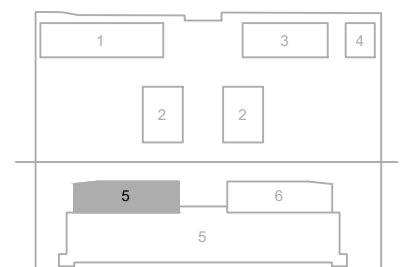
INDOOR LIVING AREA 1179 sq ft 109.53 sq m  
 OUTDOOR LIVING AREA 210 sq ft 19.51 sq m



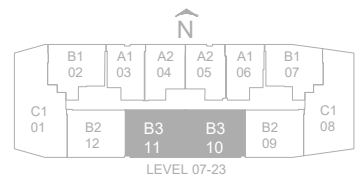
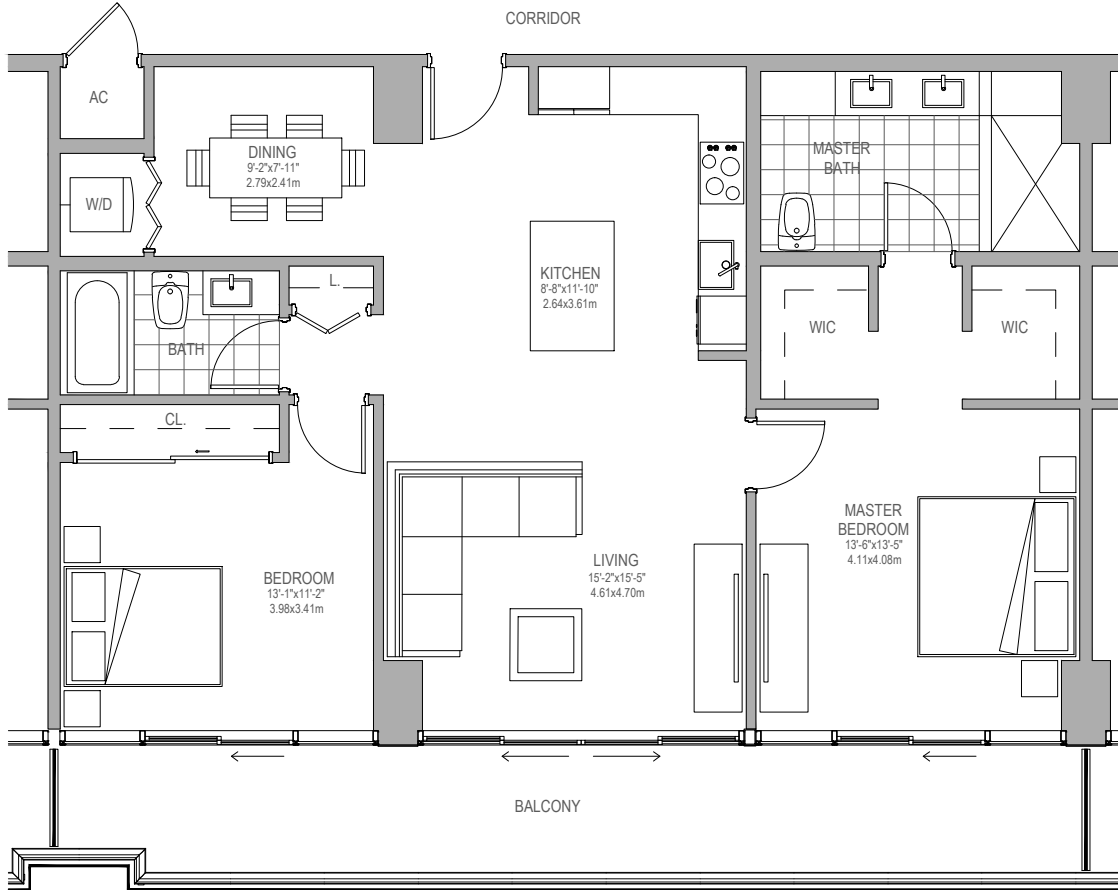
# UNIT B2

2 BEDROOM / 2 BATHS

INDOOR LIVING AREA 1204 sq ft 111.8 sq m  
 OUTDOOR LIVING AREA 252 sq ft 23.41 sq m



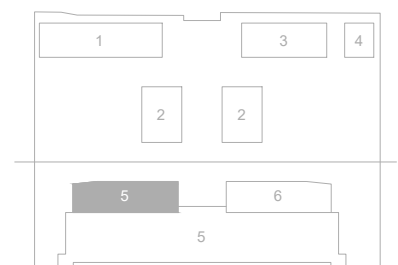
KEY PLAN

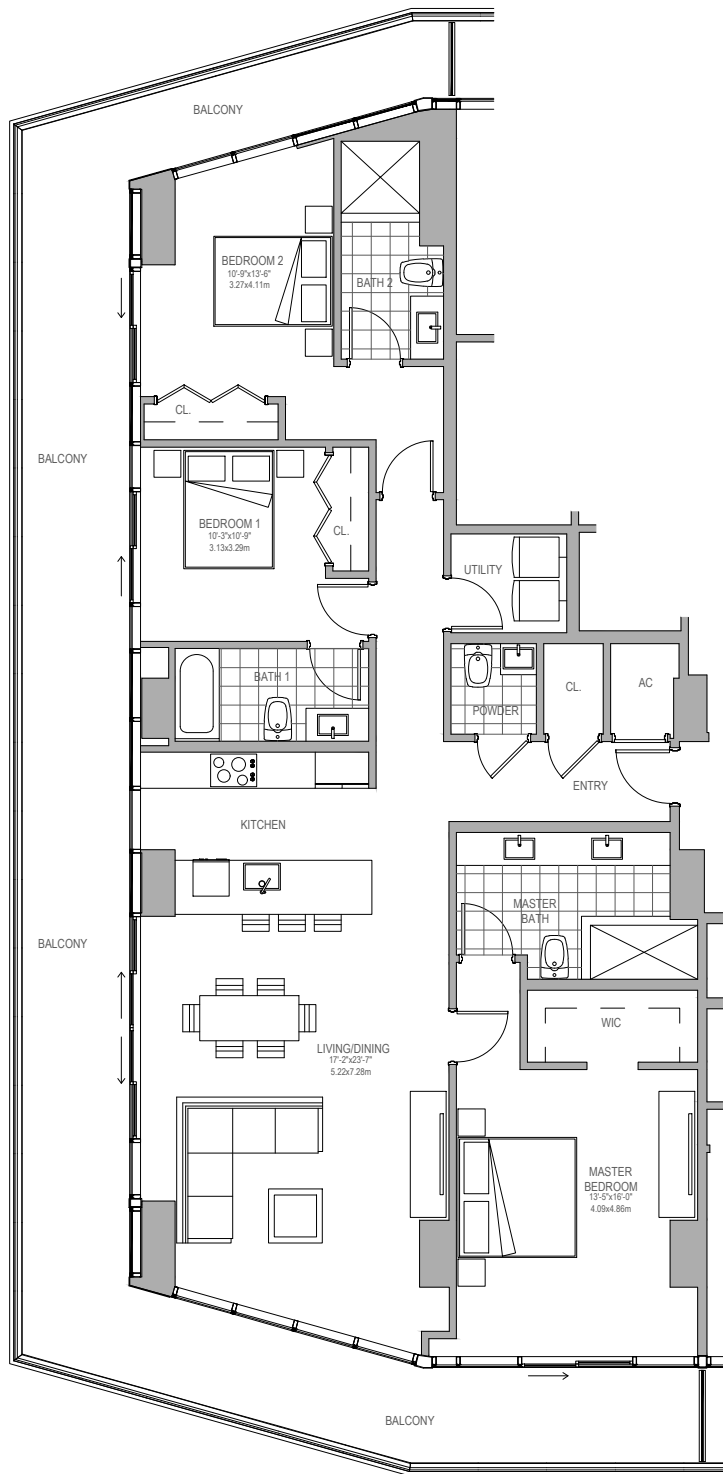


# UNIT B3

2 BEDROOM / 2 BATHS

INDOOR LIVING AREA 1226 sq ft 113.9 sq m  
 OUTDOOR LIVING AREA 255 sq ft 23.7 sq m

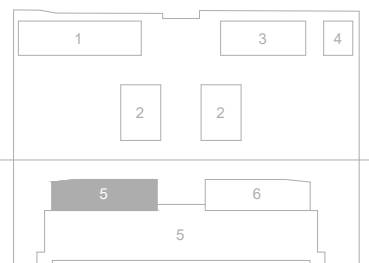
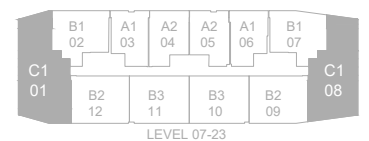
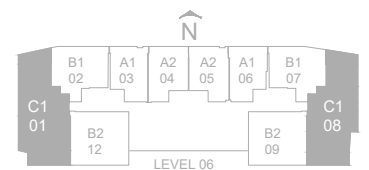




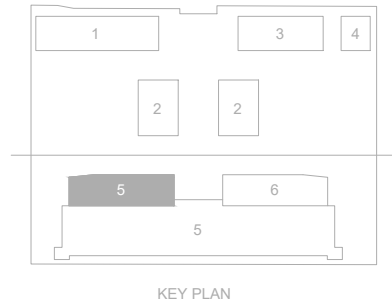
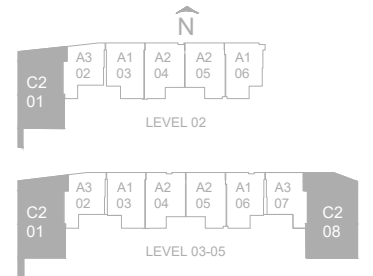
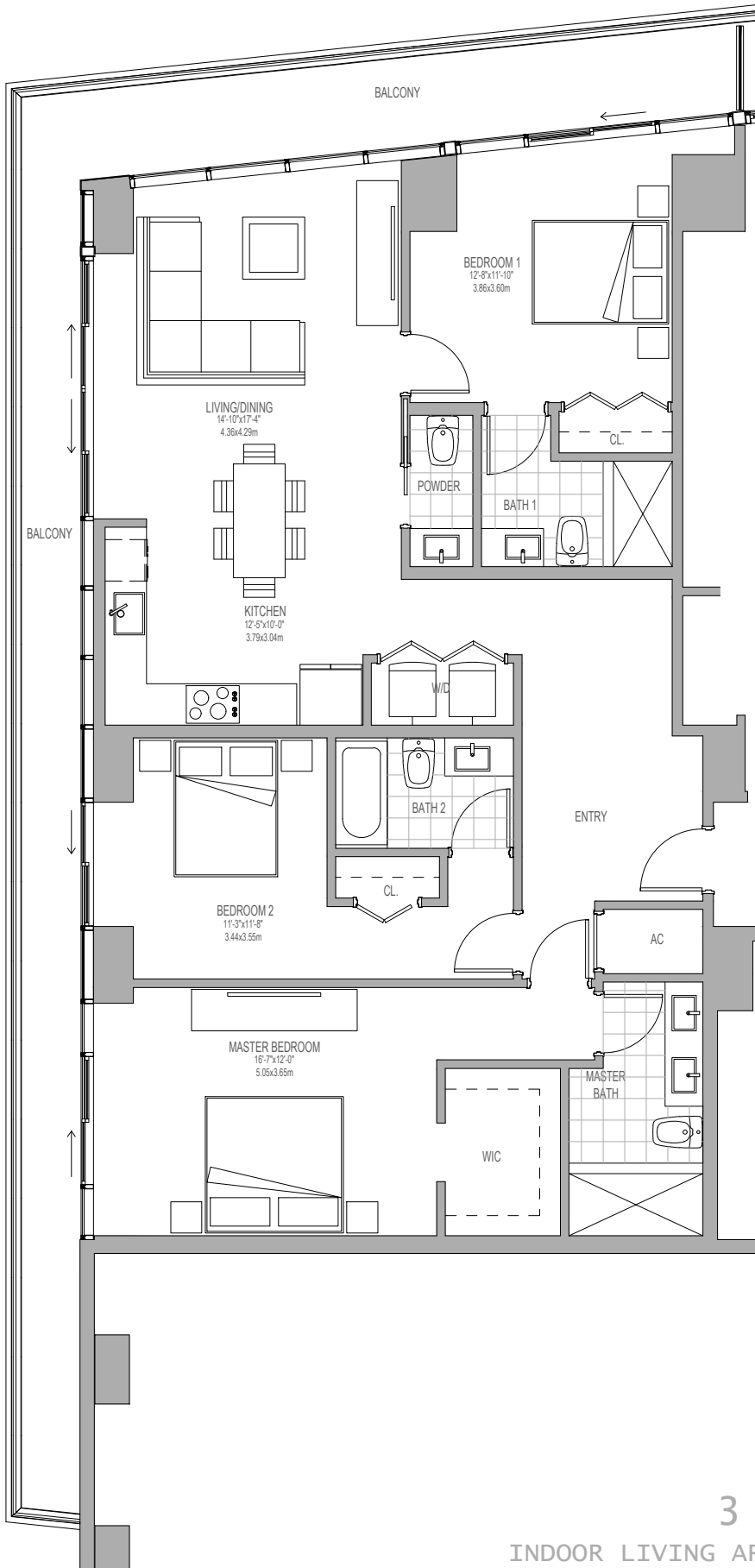
# UNIT C1

3 BEDROOM / 3.5 BATHS

INDOOR LIVING AREA 1774 sq ft 164.81 sq m  
 OUTDOOR LIVING AREA 760 sq ft 70.61 sq m



KEY PLAN

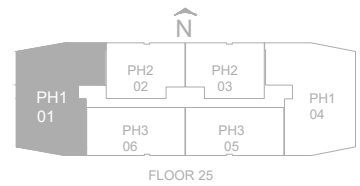
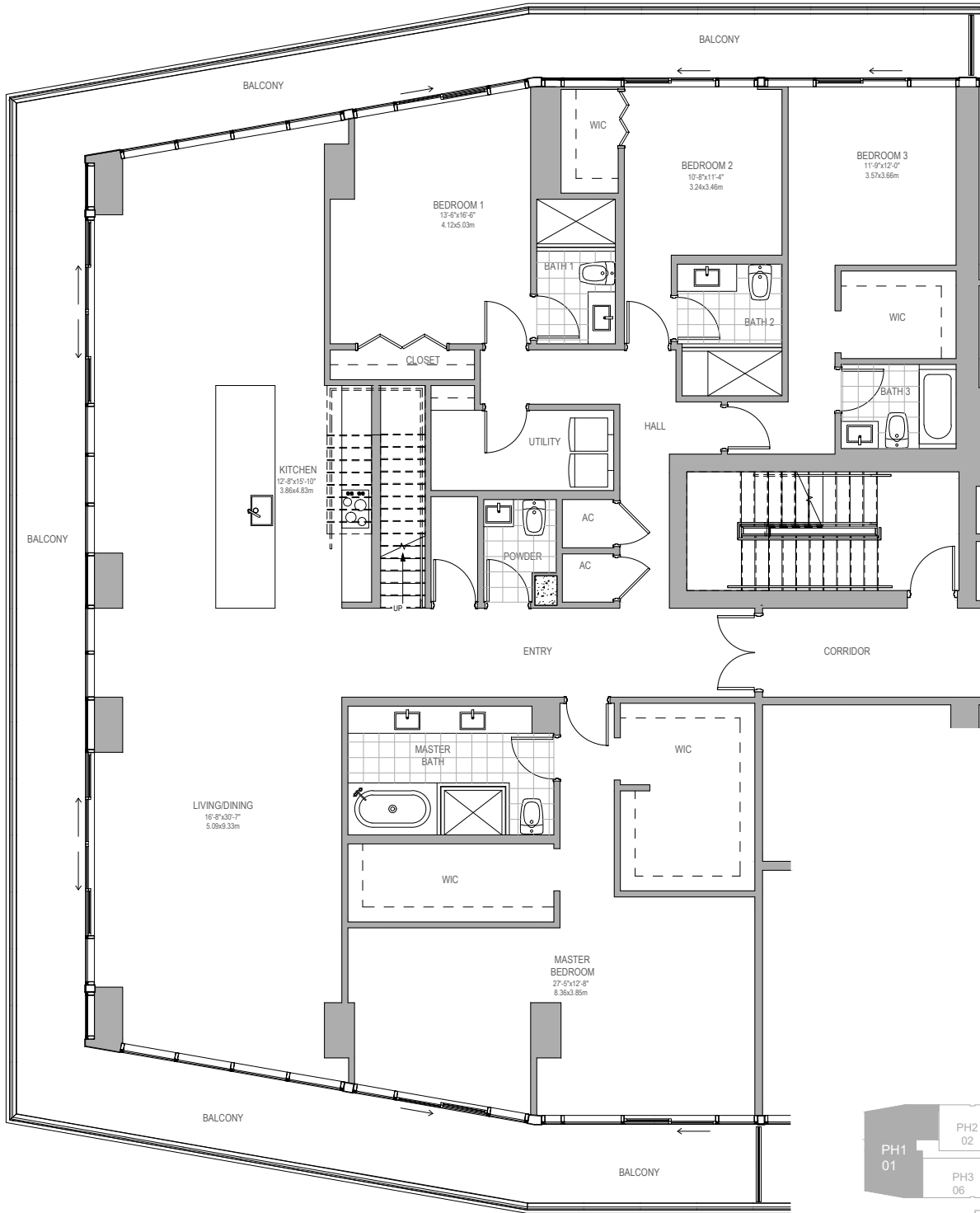


# UNIT C2

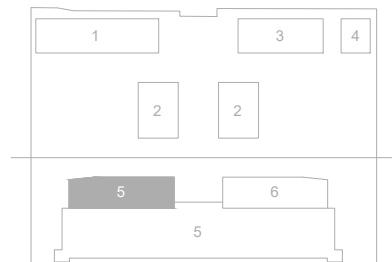
3 BEDROOM / 3.5 BATHS

INDOOR LIVING AREA 1587 sq ft 147.44 sq m  
 OUTDOOR LIVING AREA 457 sq ft 42.46 sq m





FLOOR 25



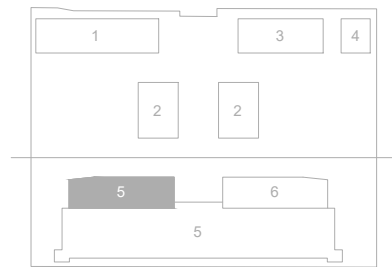
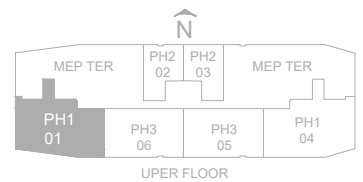
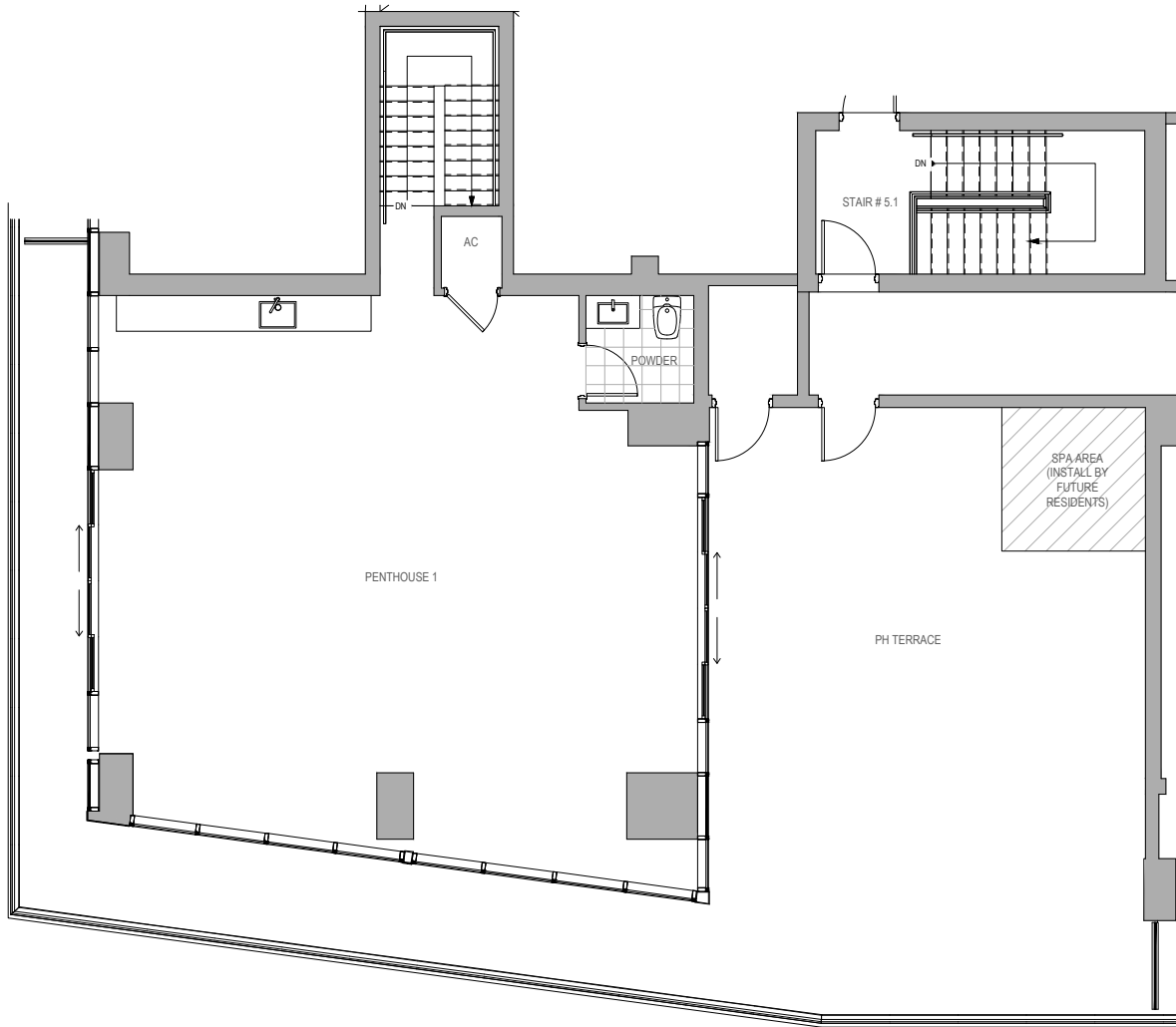
KEY PLAN

# UNIT PH1

4 BEDROOM / 4.5 BATHS

INDOOR LIVING AREA 3358 sq ft 311.97 sq m

OUTDOOR LIVING AREA 950 sq ft 88.26 sq m

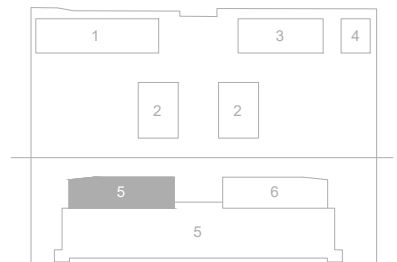
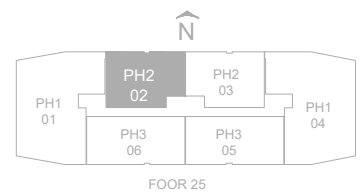
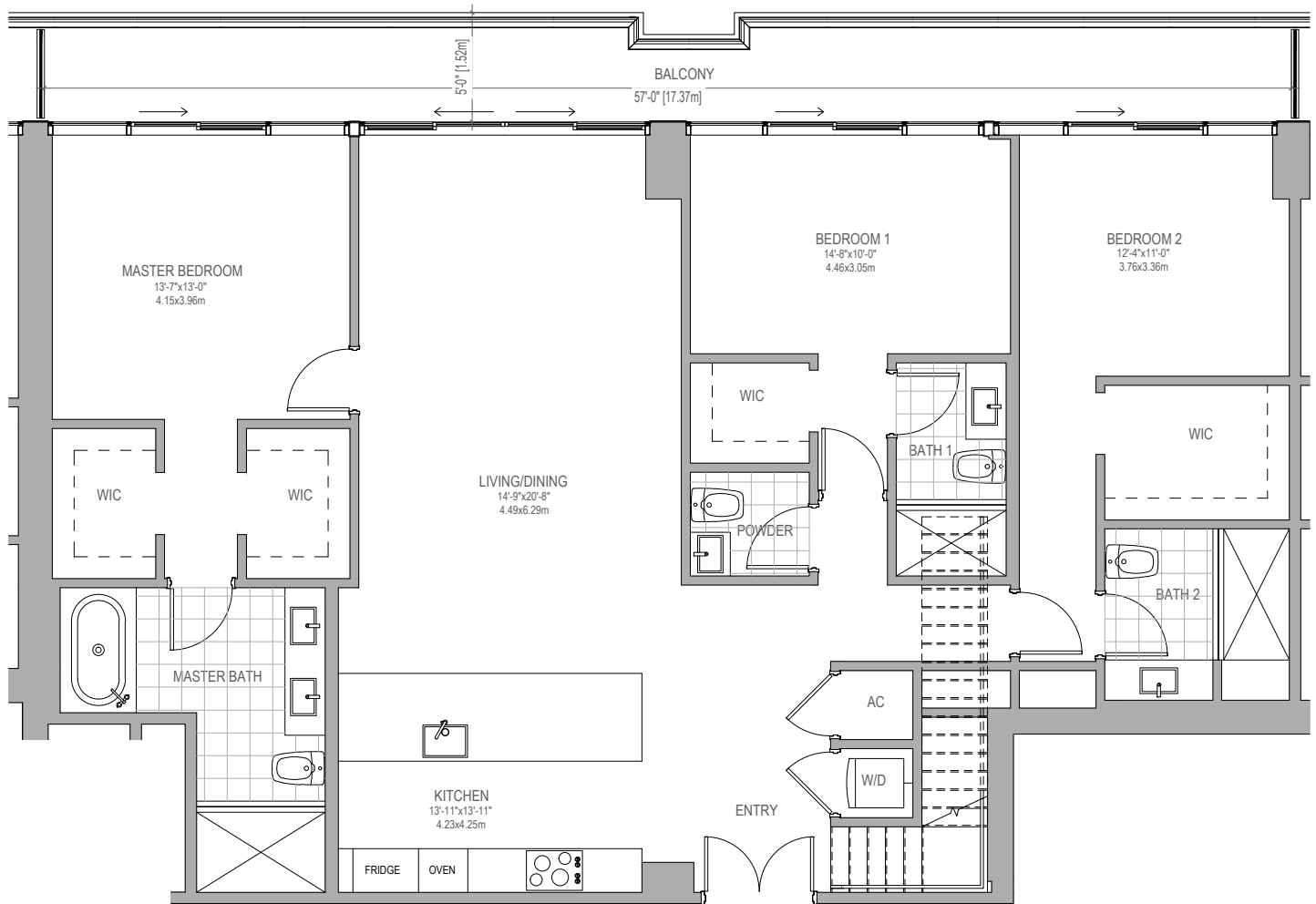


# UNIT PH1 UPPER FLOOR

LIVING ROOM / 1/2 BATH

INDOOR LIVING AREA	1292 sq ft	120.03 sq m
OUTDOOR LIVING AREA	1226 sq ft	113.90 sq m

KEY PLAN



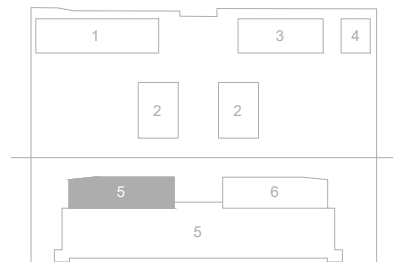
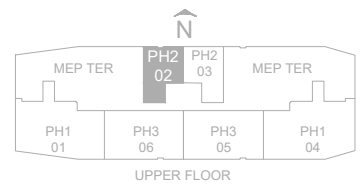
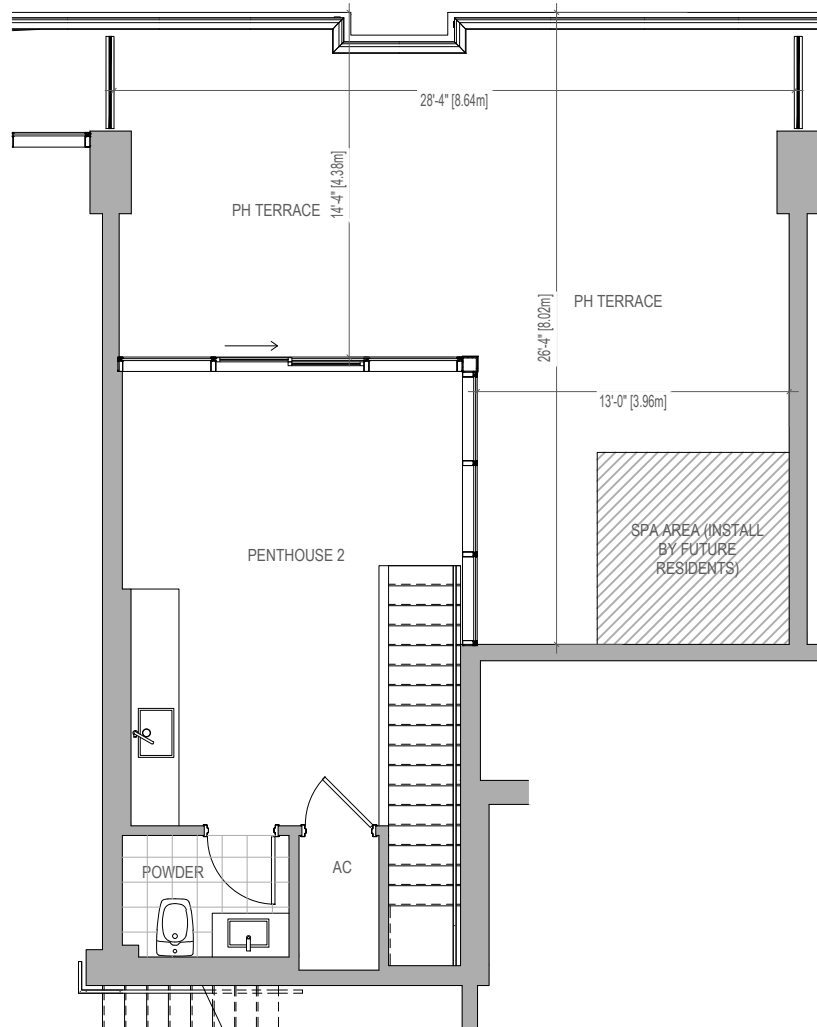
KEY PLAN

# UNIT PH2

3 BEDROOM / 3.5 BATHS

INDOOR LIVING AREA 1879 sq ft 174.56 sq m

OUTDOOR LIVING AREA 282 sq ft 26.20 sq m

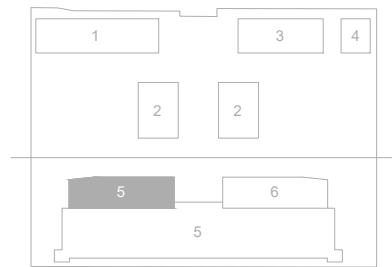
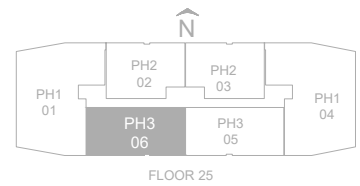
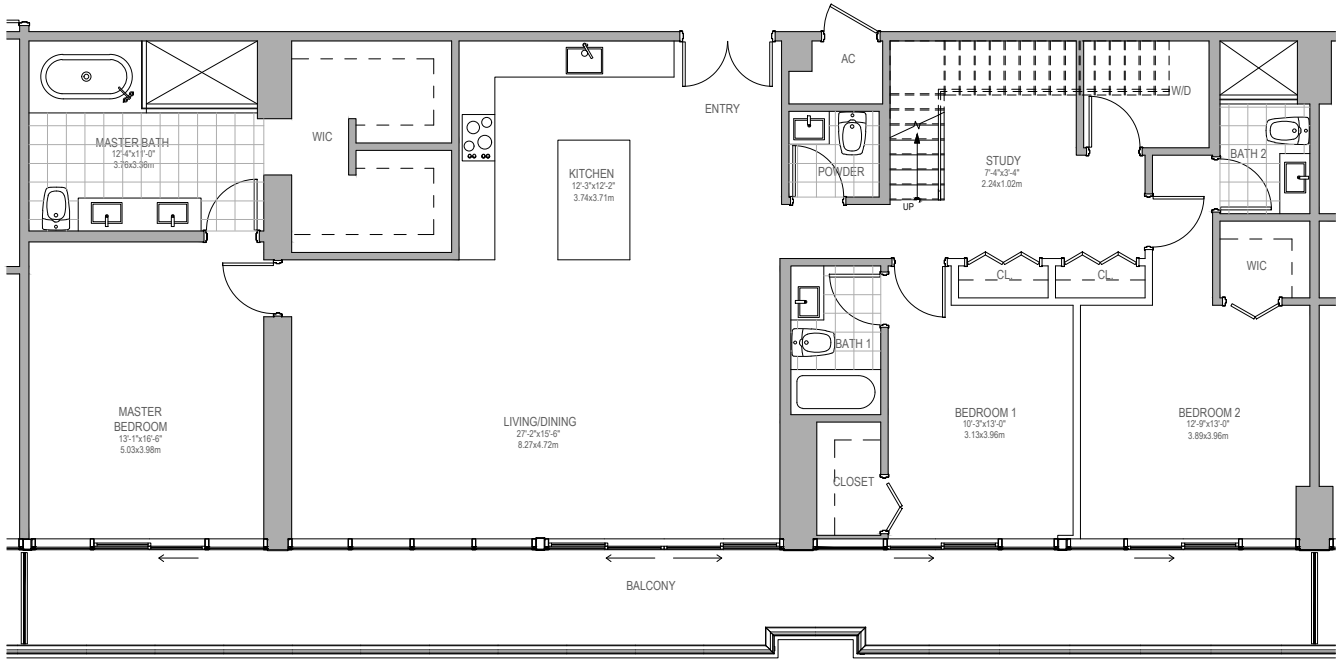


# UNIT PH2 UPPER FLOOR

LIVING ROOM / 1/2 BATHS

INDOOR LIVING AREA 407 sq ft 37.81 sq m  
 OUTDOOR LIVING AREA 572 sq ft 53.14 sq m

KEY PLAN

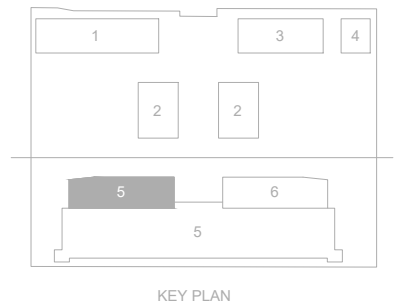
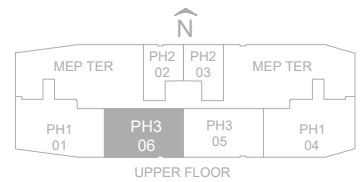
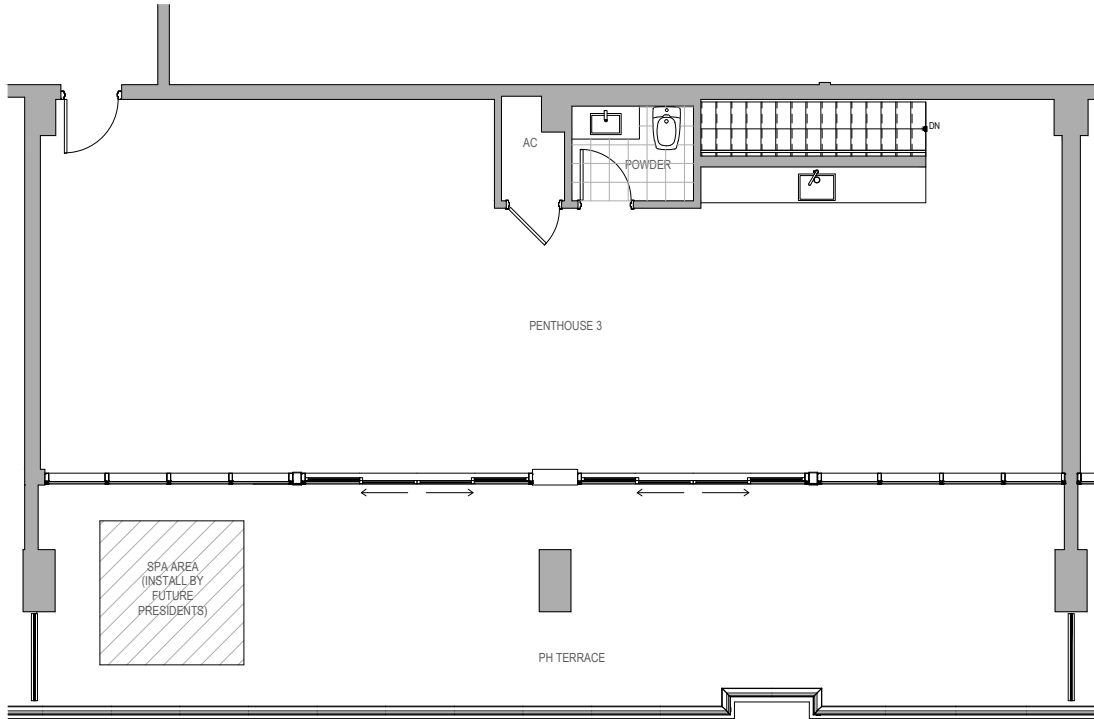


# UNIT PH3

3 BEDROOM / 3.5 BATHS

INDOOR LIVING AREA 2044 sq ft 189.89 sq m

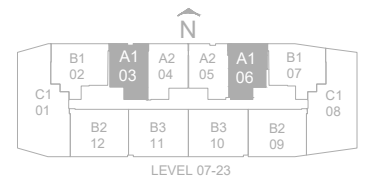
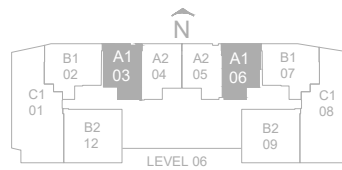
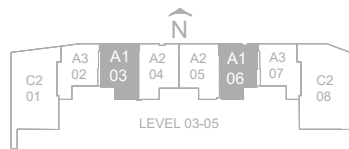
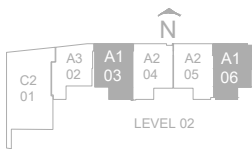
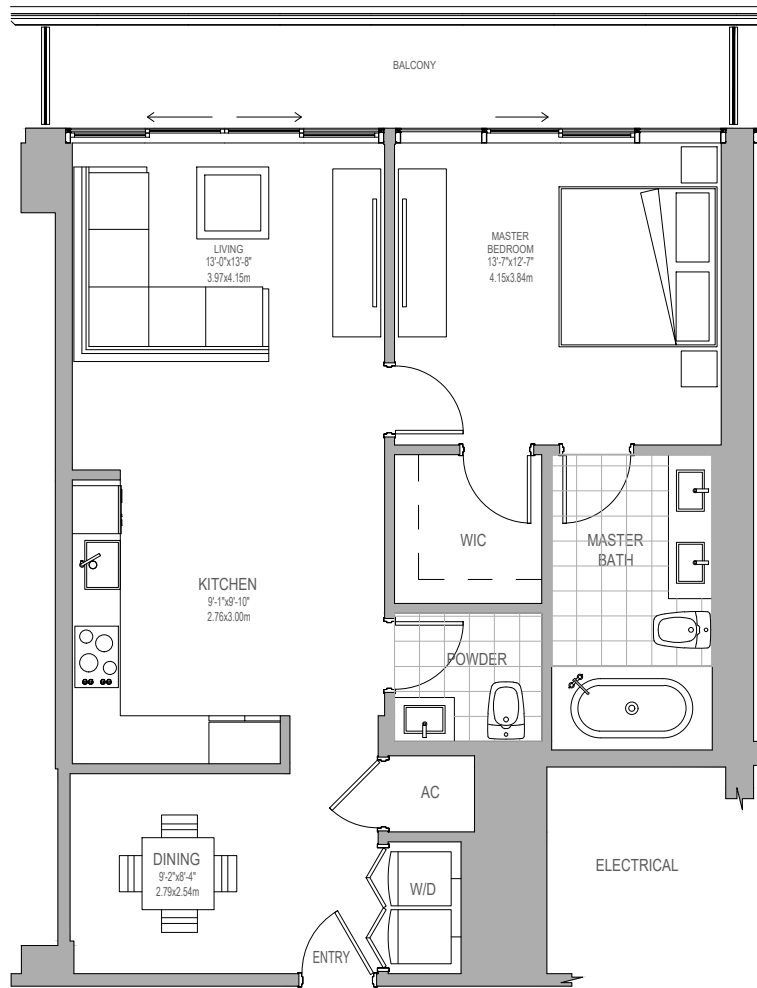
OUTDOOR LIVING AREA 426 sq ft 39.58 sq m



# UNIT PH3 UPPER FLOOR

LIVING ROOM / 1/5 BATHS

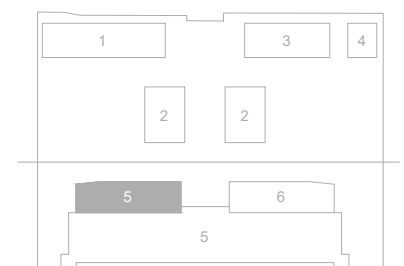
INDOOR LIVING AREA	1283 sq ft	119.19 sq m
OUTDOOR LIVING AREA	754 sq ft	70.05 sq m



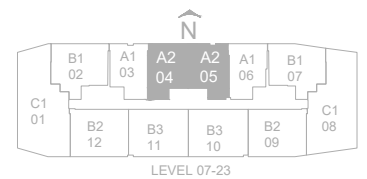
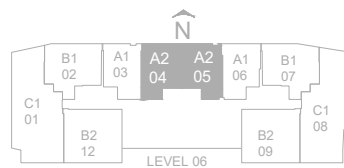
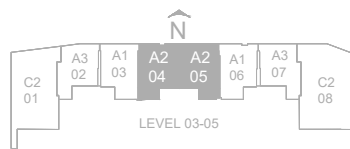
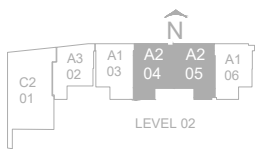
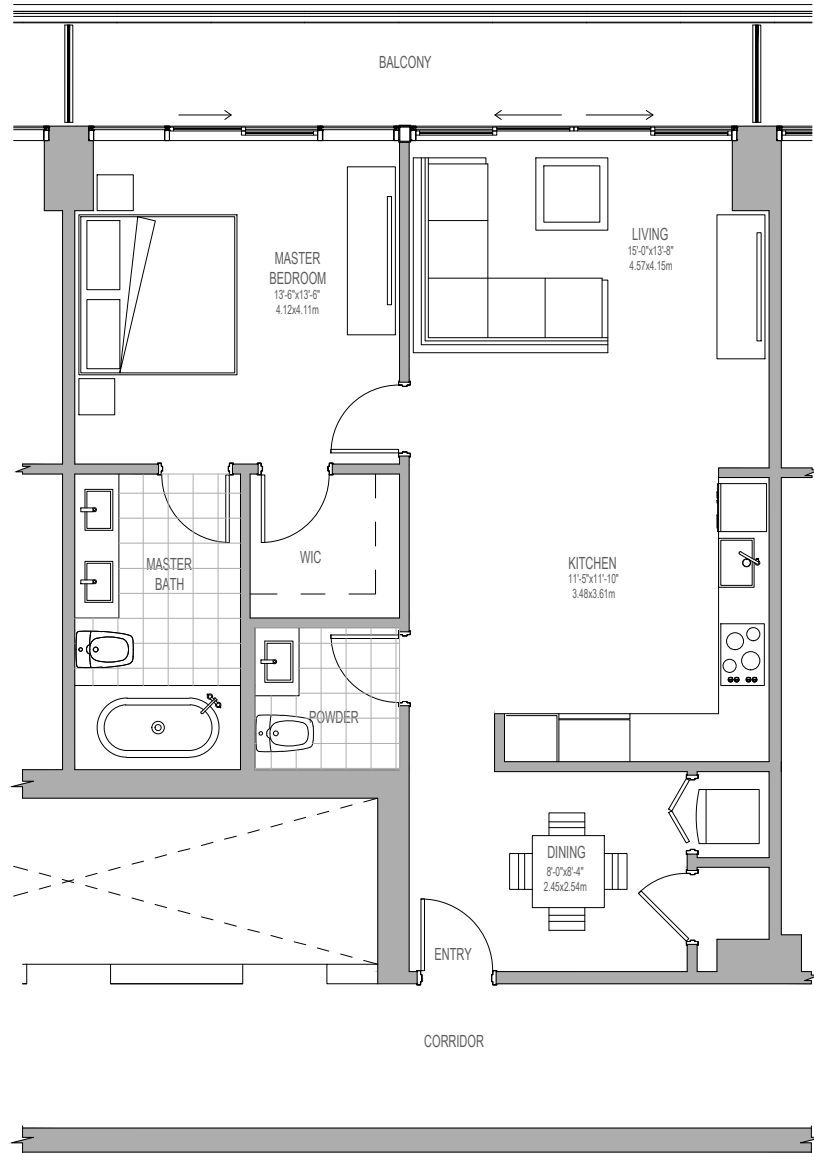
# UNIT A1'

1 BEDROOM / 1.5 BATHS

INDOOR LIVING AREA 894 sq ft 83.05 sq m  
 OUTDOOR LIVING AREA 143 sq ft 13.91 sq m



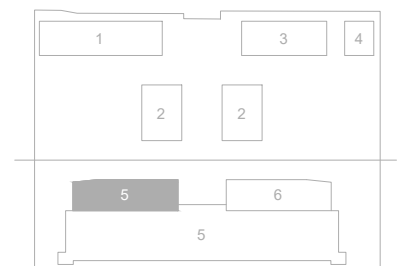
KEY PLAN



# UNIT A2'

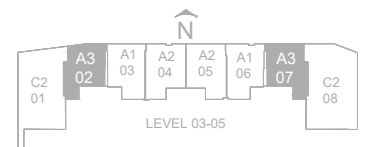
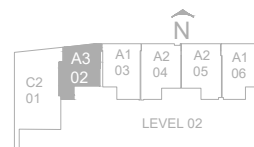
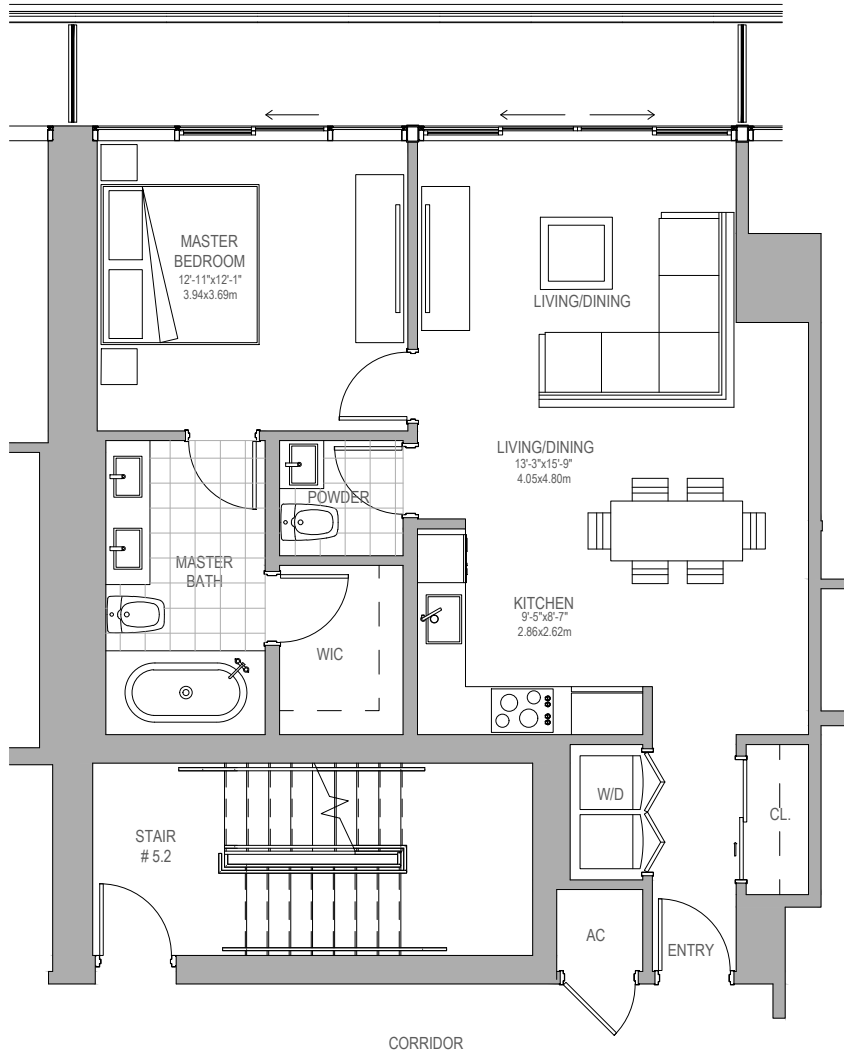
1 BEDROOM / 1.5 BATHS

INDOOR LIVING AREA 937 sq ft 87.0 sq m  
 OUTDOOR LIVING AREA 143 sq ft 13.3 sq m



KEY PLAN

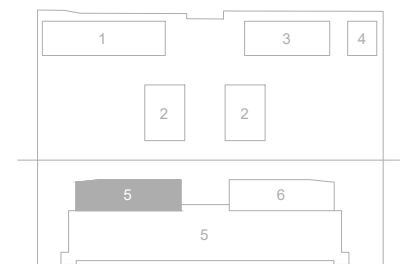


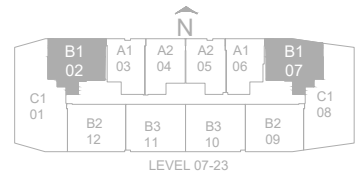
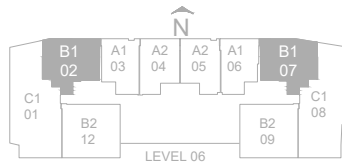
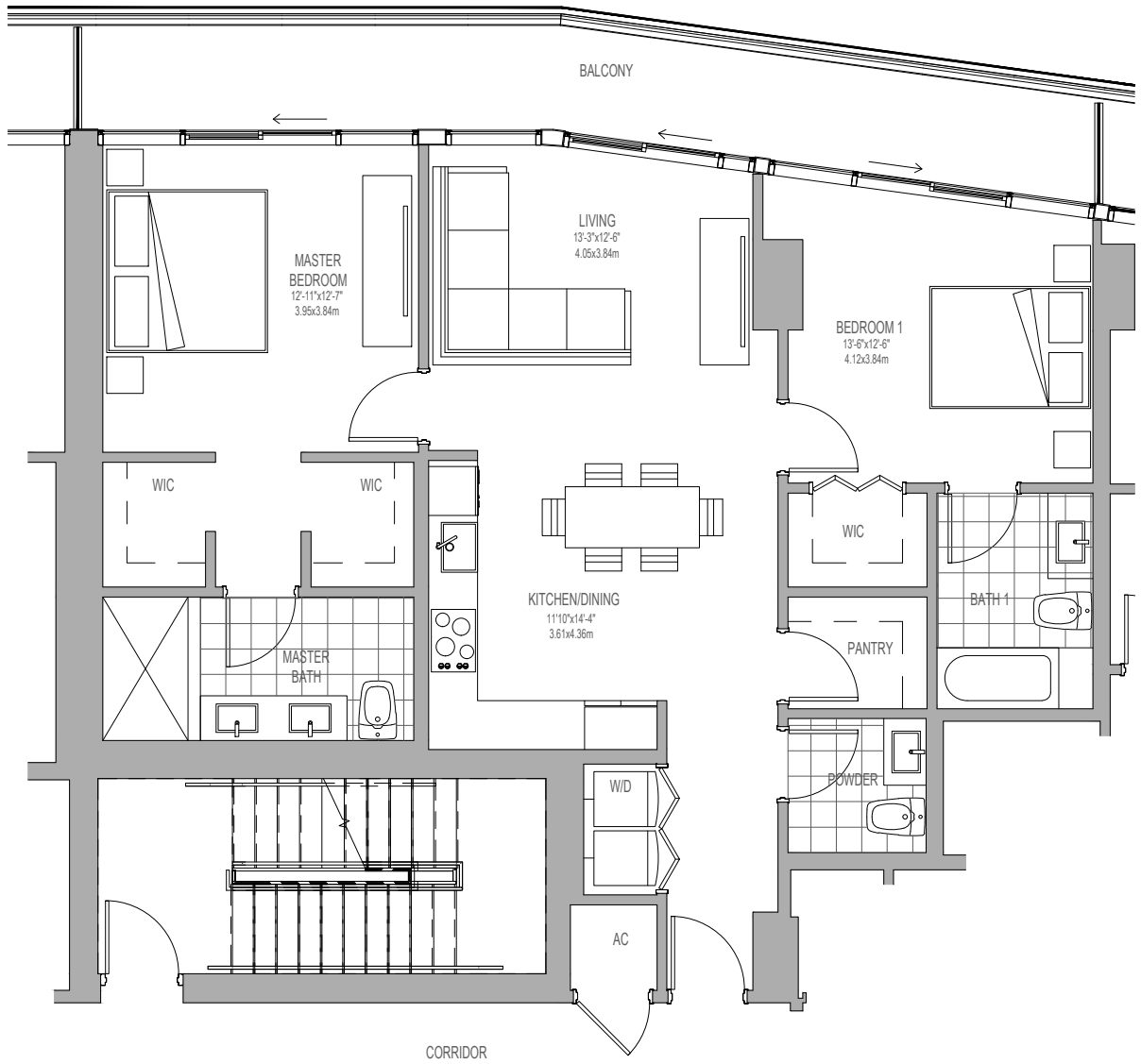


# UNIT A3'

1 BEDROOM / 1.5 BATHS

INDOOR LIVING AREA 887 sq ft 82.40 sq m  
 OUTDOOR LIVING AREA 139 sq ft 12.91 sq m

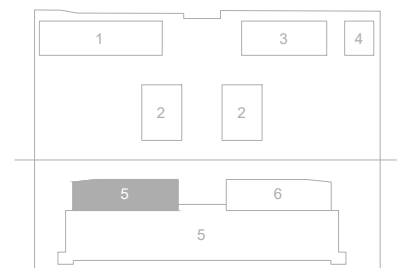




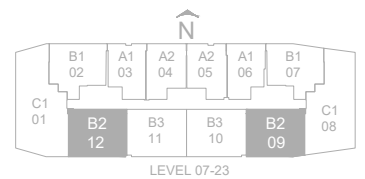
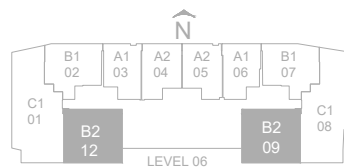
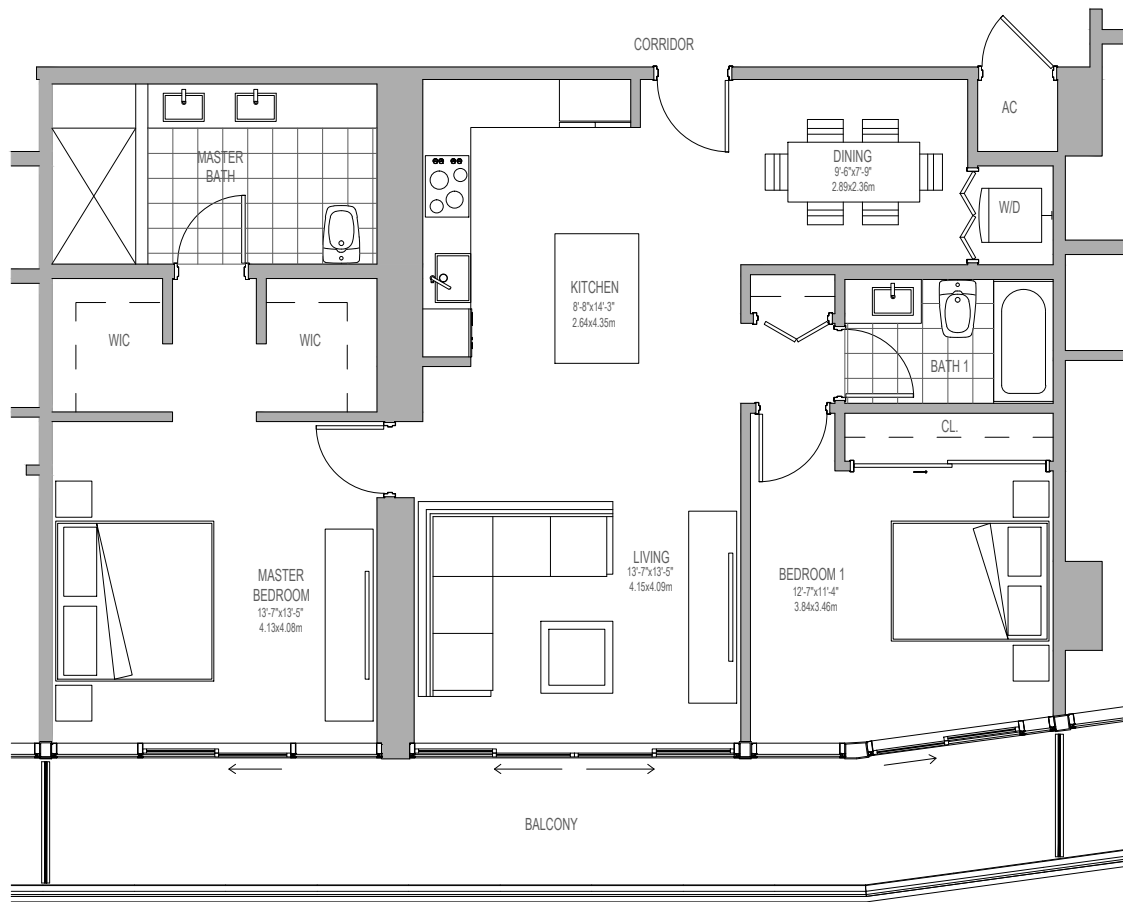
# UNIT B1'

2 BEDROOM / 2.5 BATHS

INDOOR LIVING AREA 1162 sq ft 107.95 sq m  
 OUTDOOR LIVING AREA 209 sq ft 19.42 sq m



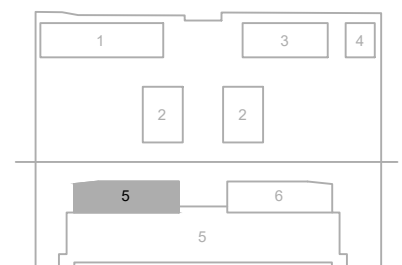
KEY PLAN



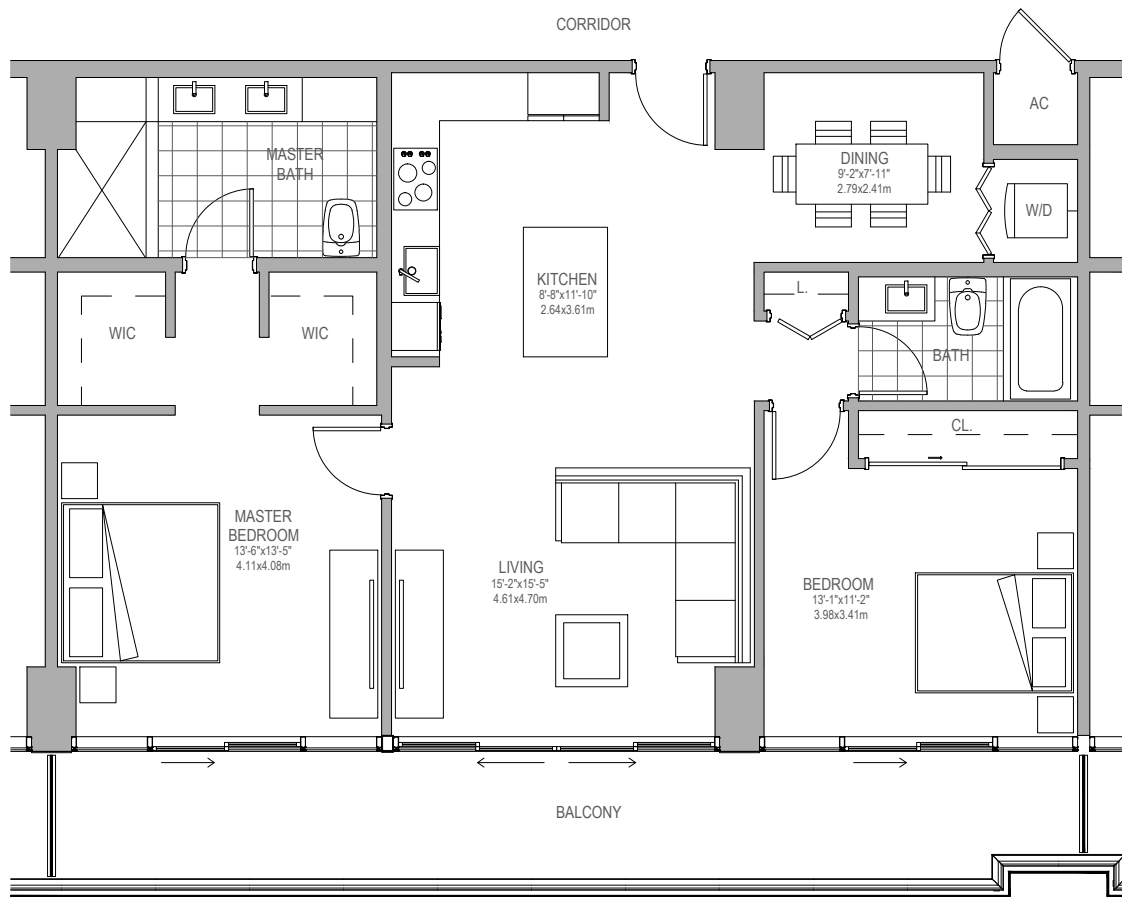
# UNIT B2'

2 BEDROOM / 2 BATHS

INDOOR LIVING AREA 1199 sq ft 111.4 sq m  
 OUTDOOR LIVING AREA 254 sq ft 23.6 sq m



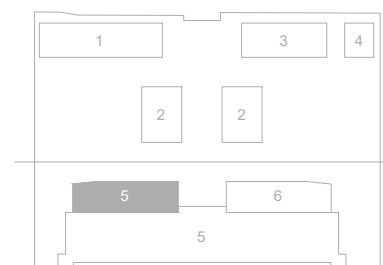
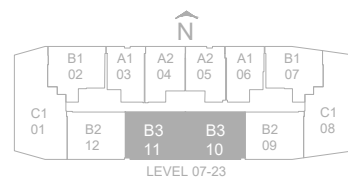
KEY PLAN

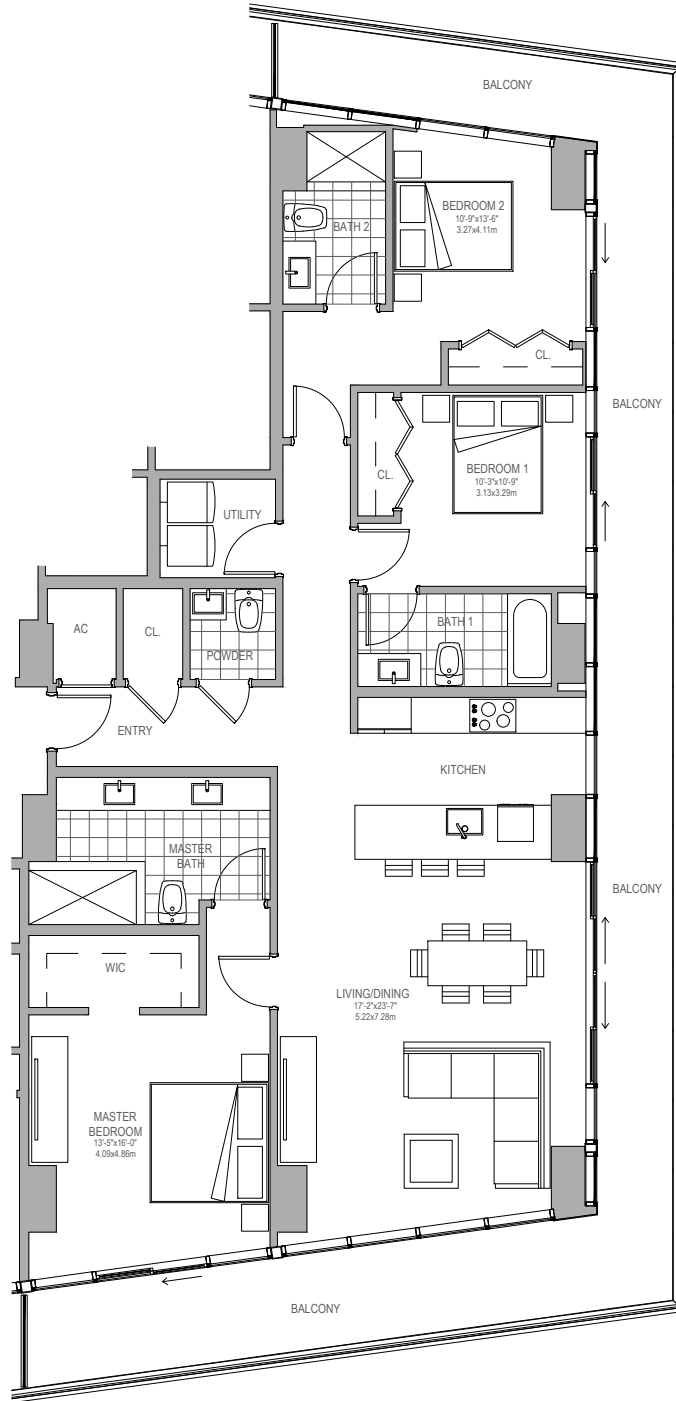


# UNIT B3'

2 BEDROOM / 2 BATHS

INDOOR LIVING AREA 1226 sq ft 113.9 sq m  
 OUTDOOR LIVING AREA 254 sq ft 23.6 sq m

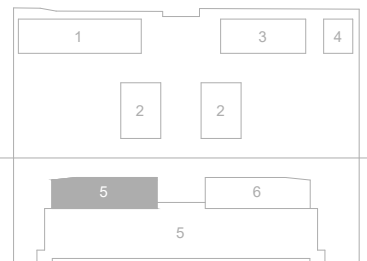
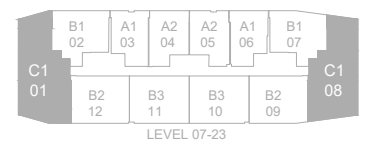
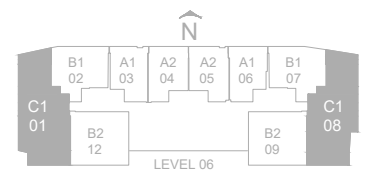




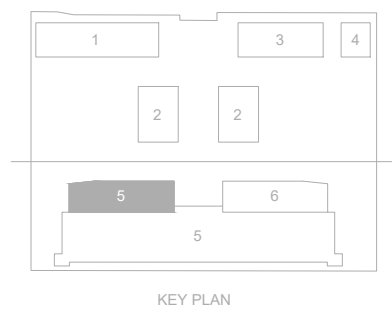
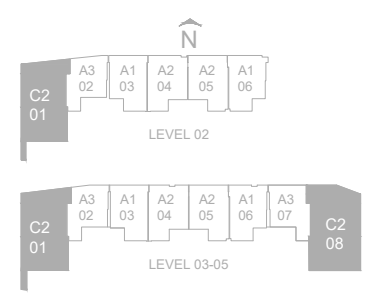
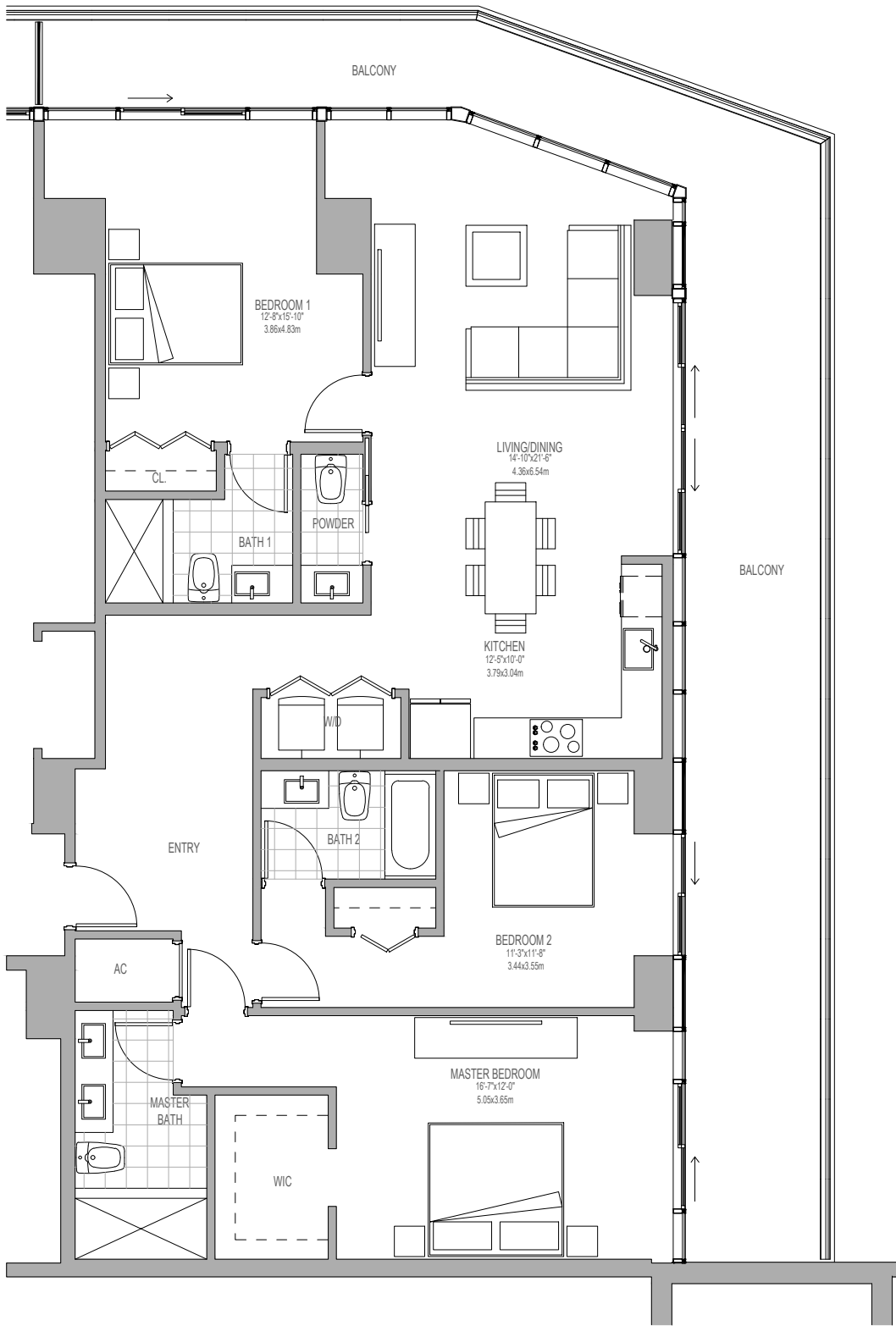
# UNIT C1'

3 BEDROOM / 3.5 BATHS

INDOOR LIVING AREA 1667 sq ft 154.87 sq m  
 OUTDOOR LIVING AREA 627 sq ft 58.25 sq m



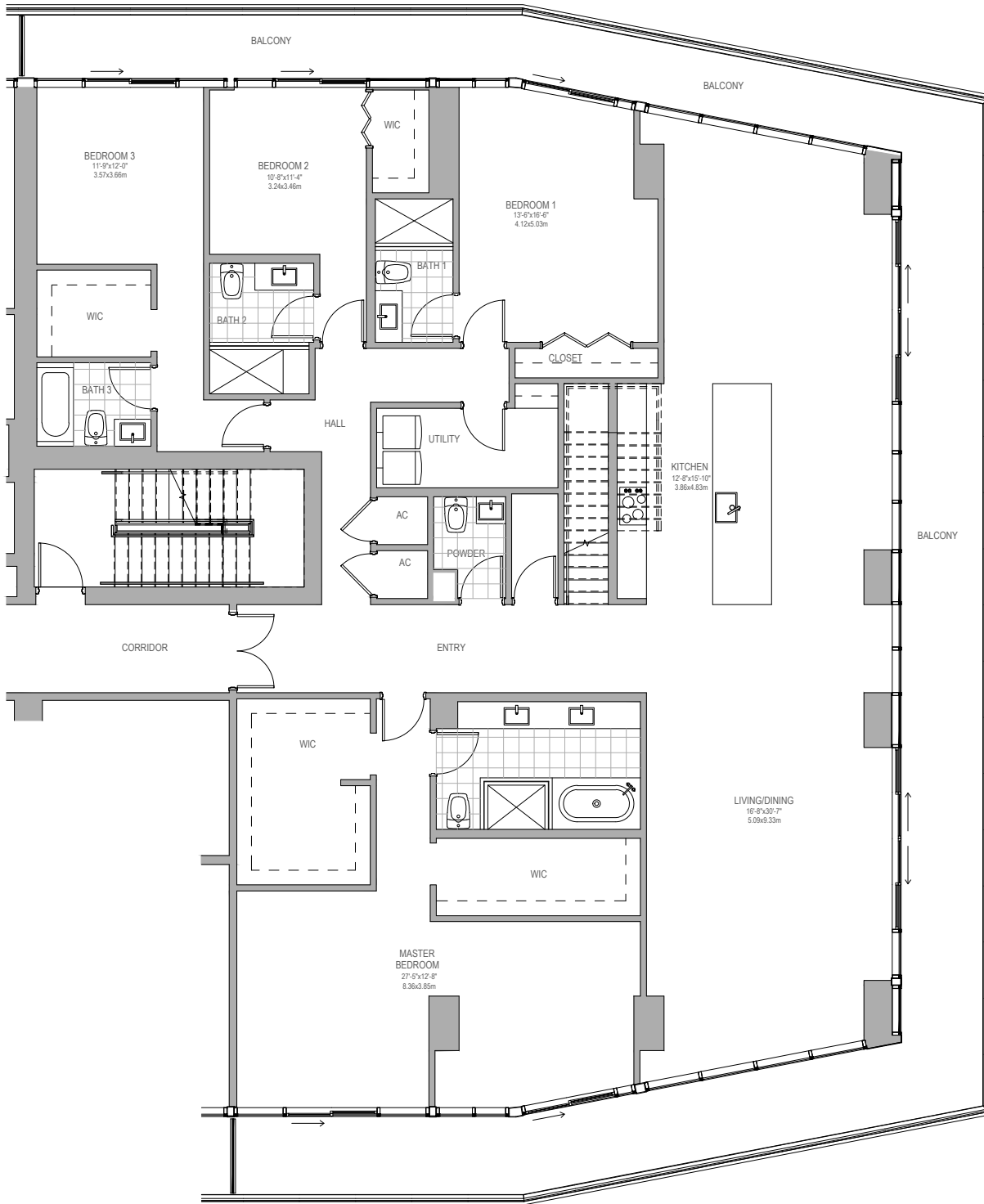
KEY PLAN



# UNIT C2'

3 BEDROOM / 3.5 BATHS

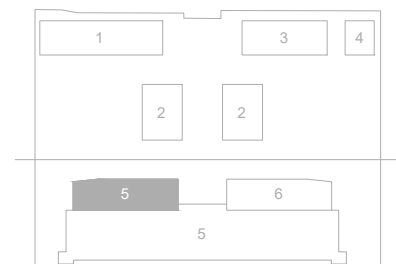
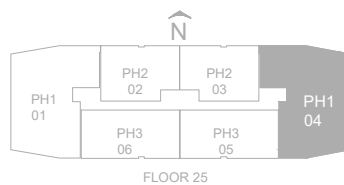
INDOOR LIVING AREA 1684 sq ft 156.45 sq m  
 OUTDOOR LIVING AREA 579 sq ft 53.79 sq m



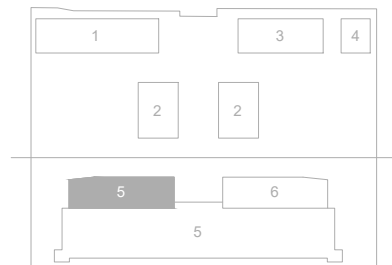
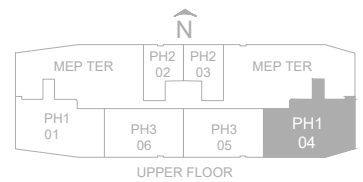
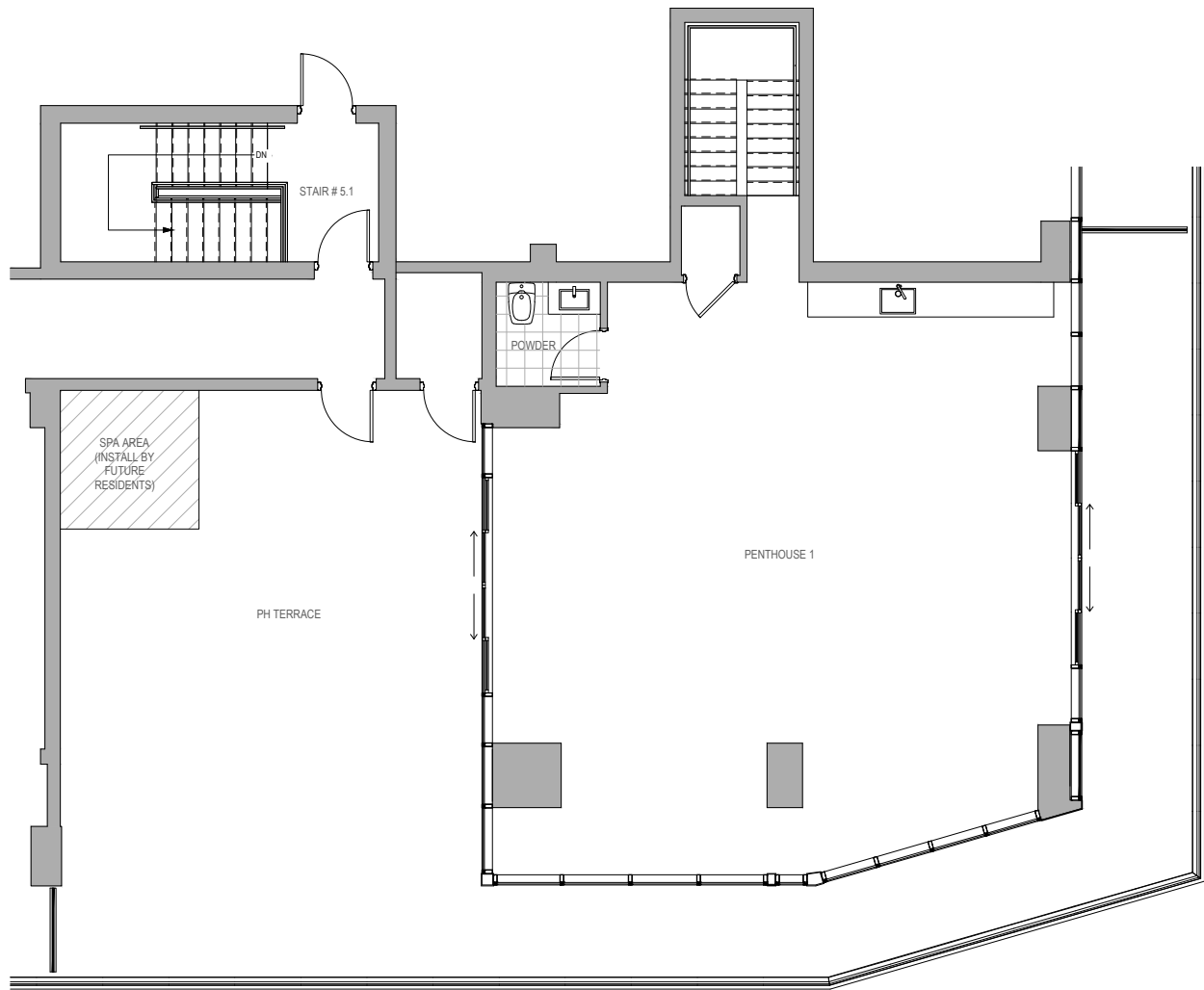
# UNIT PH1'

4 BEDROOM / 4.5 BATHS

INDOOR LIVING AREA 3386 sq ft 314.56 sq m  
 OUTDOOR LIVING AREA 1016 sq ft 94.38 sq m



KEY PLAN



# UNIT PH1 UPPER FLOOR

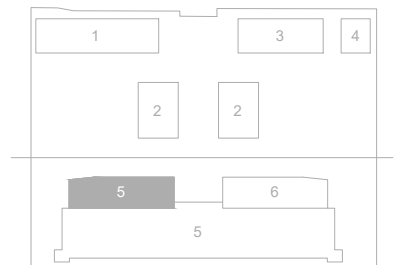
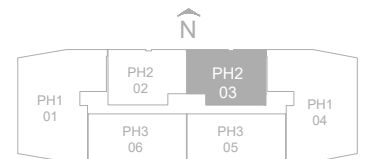
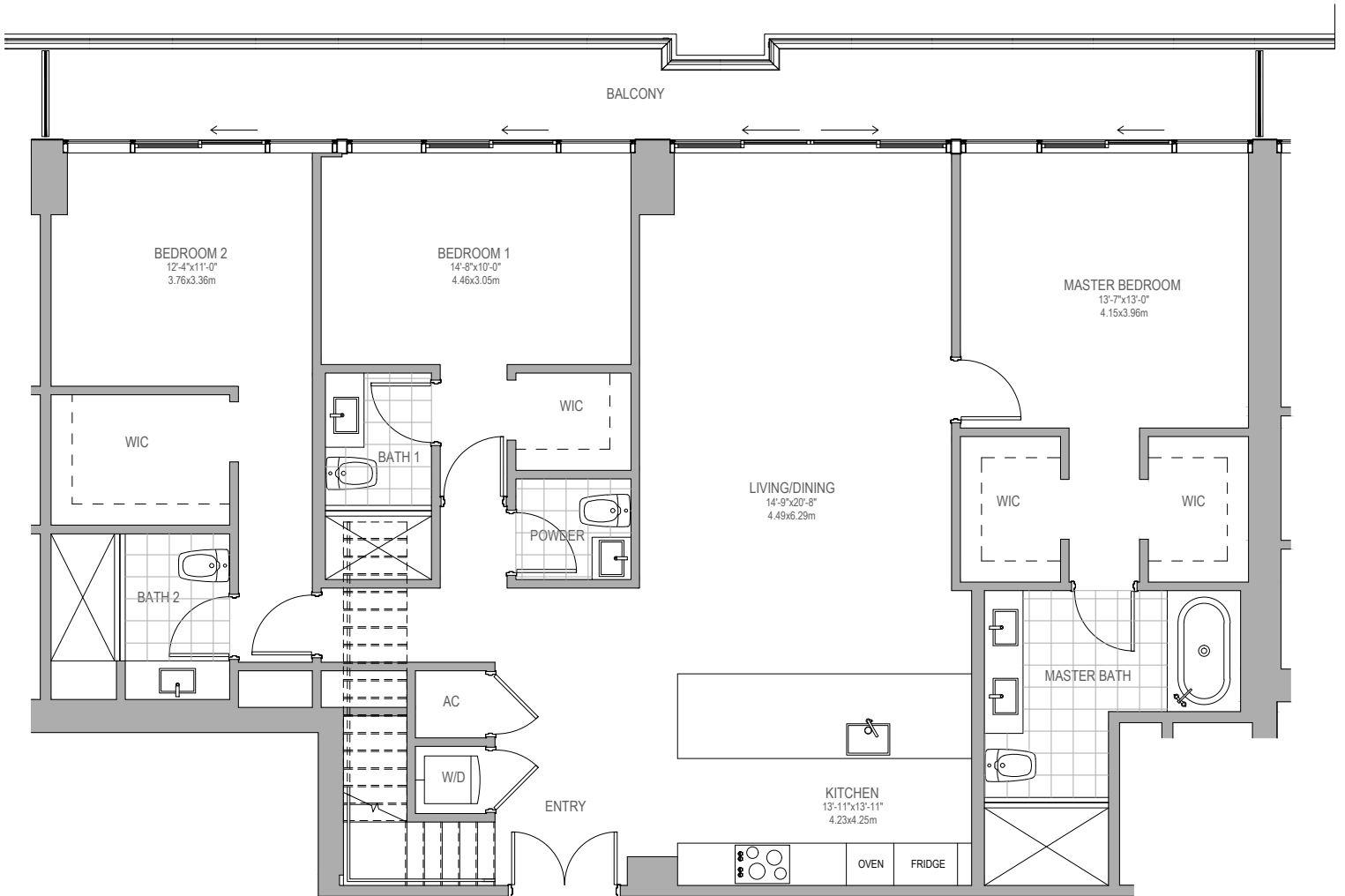
LIVING ROOM / 1/2 BATH

INDOOR LIVING AREA 1370 sq ft 127.27 sq m

OUTDOOR LIVING AREA 1327 sq ft 123.28 sq m

KEY PLAN



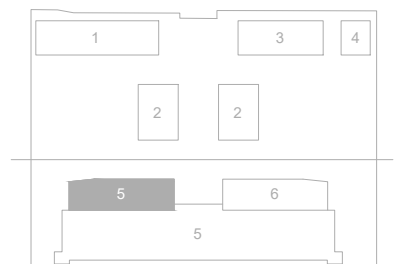
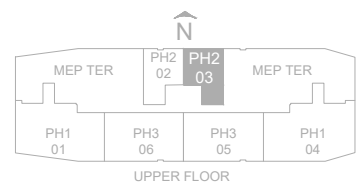
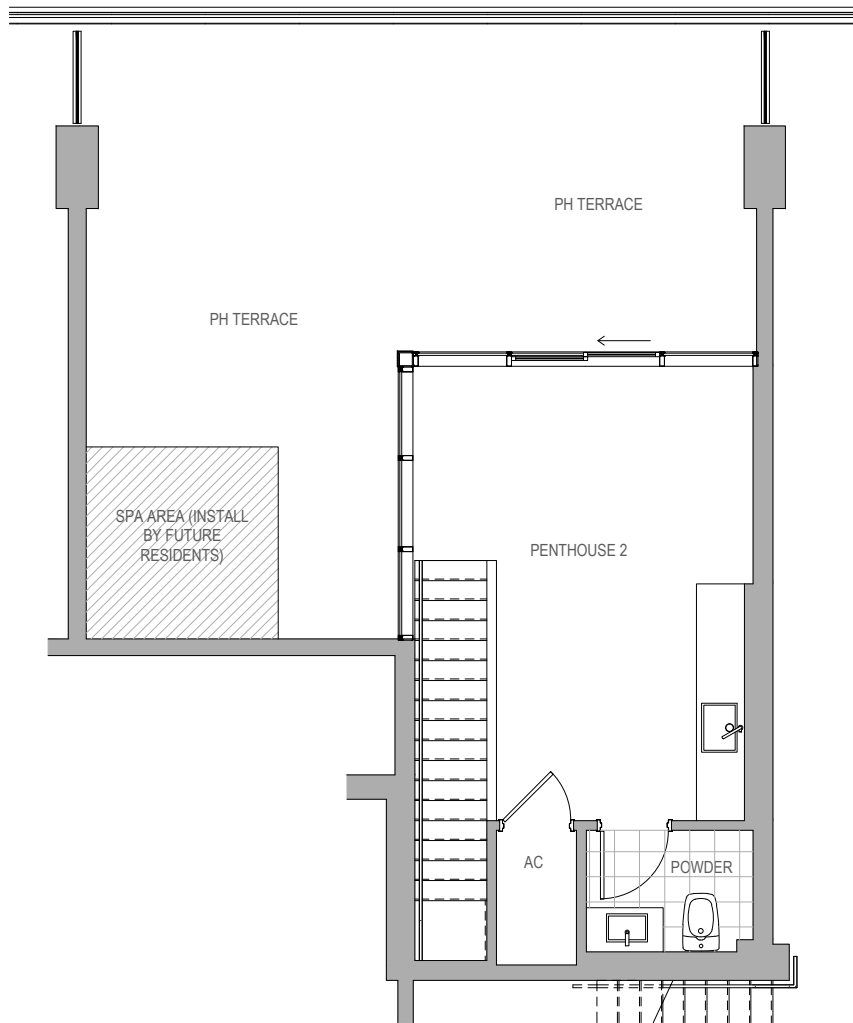


# UNIT PH2'

3 BEDROOM / 3.5 BATHS

INDOOR LIVING AREA 1894 sq ft 175.96 sq m

OUTDOOR LIVING AREA 283 sq ft 26.29 sq m



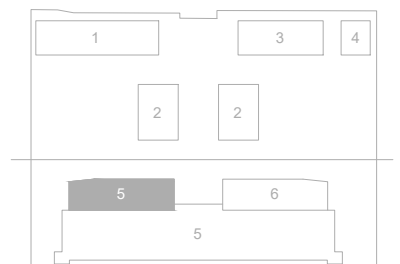
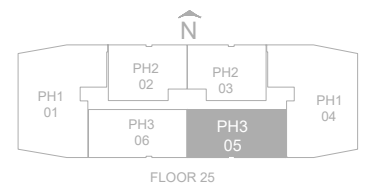
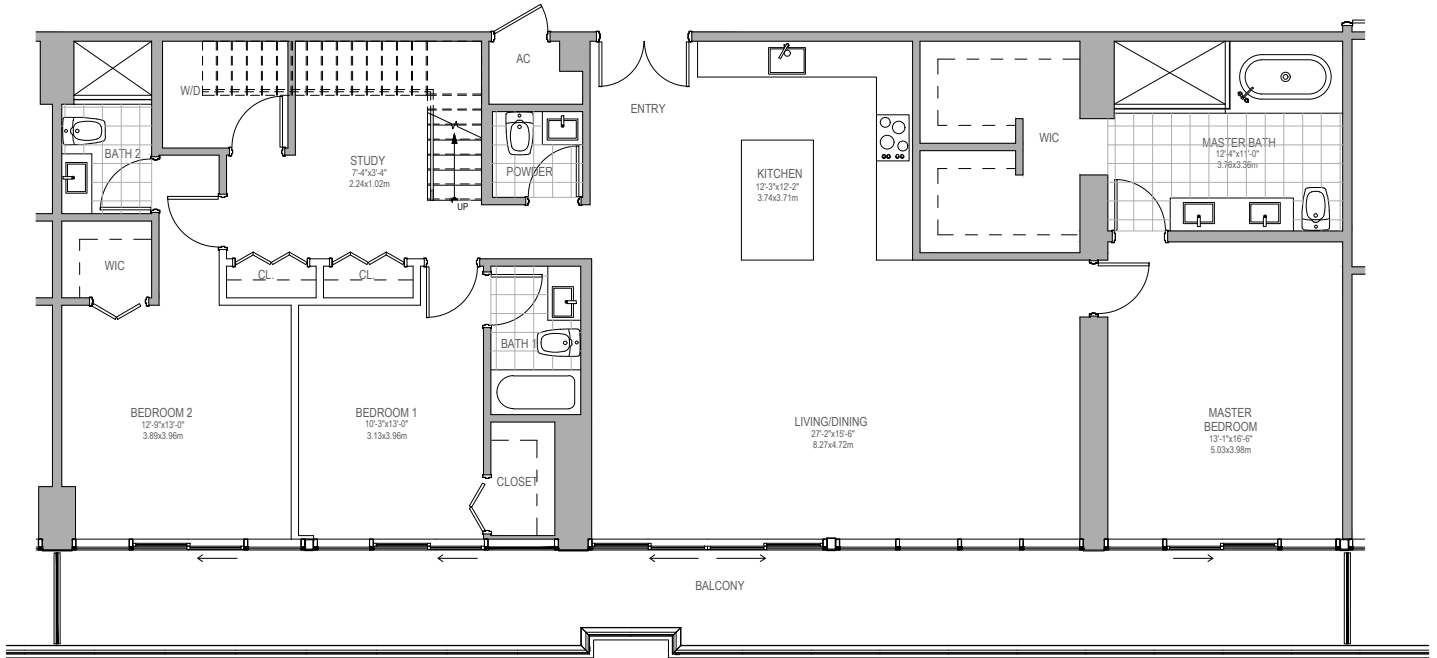
# UNIT PH2 UPPER FLOOR

LIVING ROOM / 1/2 BATHS

INDOOR LIVING AREA 407 sq ft 37.81 sq m

OUTDOOR LIVING AREA 577 sq ft 53.60 sq m

KEY PLAN



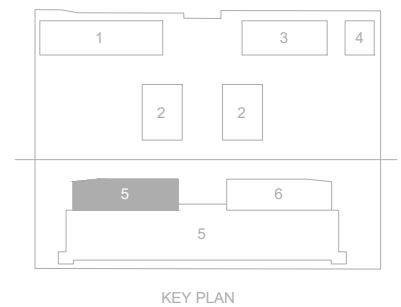
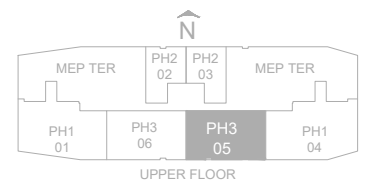
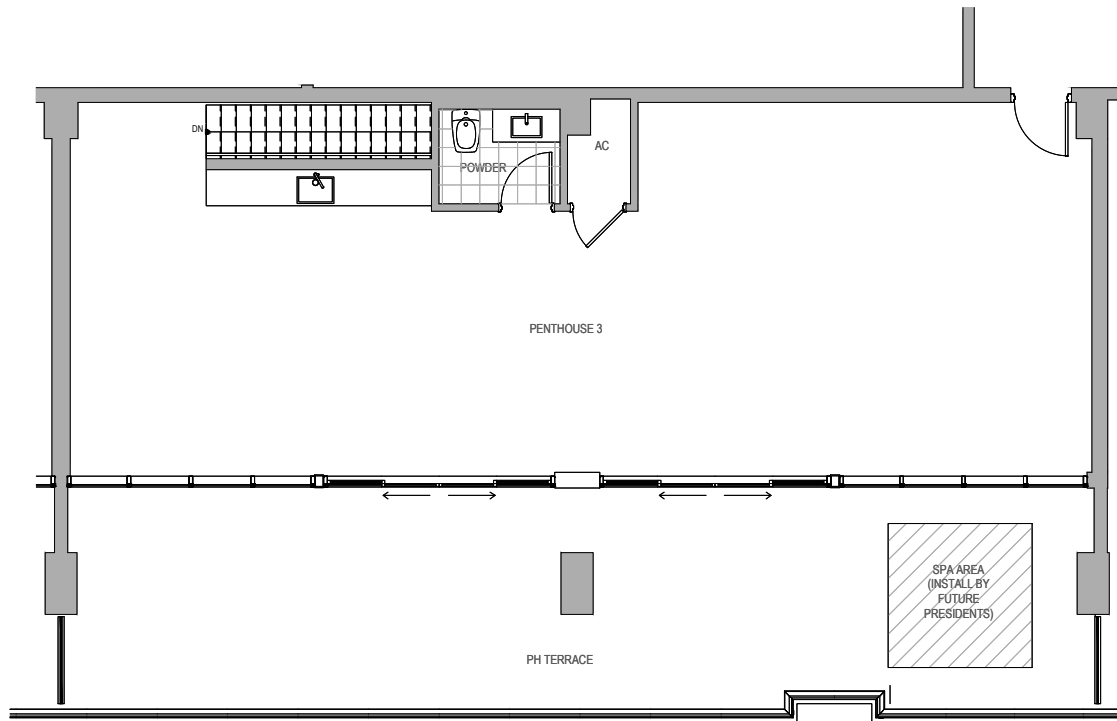
# UNIT PH3'

3 BEDROOM / 3.5 BATHS

INDOOR LIVING AREA 2044 sq ft 189.89 sq m

OUTDOOR LIVING AREA 426 sq ft 39.58 sq m

KEY PLAN



# UNIT PH3 UPPER FLOOR

LIVING ROOM / 1/5 BATHS

INDOOR LIVING AREA 1284 sq ft 119.19 sq m

OUTDOOR LIVING AREA 754 sq ft 70.05 sq m