



CASAMAR

POMPANO BEACH

POMPANO BEACH LIKE YOU'VE NEVER SEEN

900 N OCEAN BLVD, POMPANO BEACH, FL 33062 | INQUIRIES 954.433.6080 | CASAMARBEACH.COM

Model 01



FLOORPLAN

Model 01

FLOORPLAN

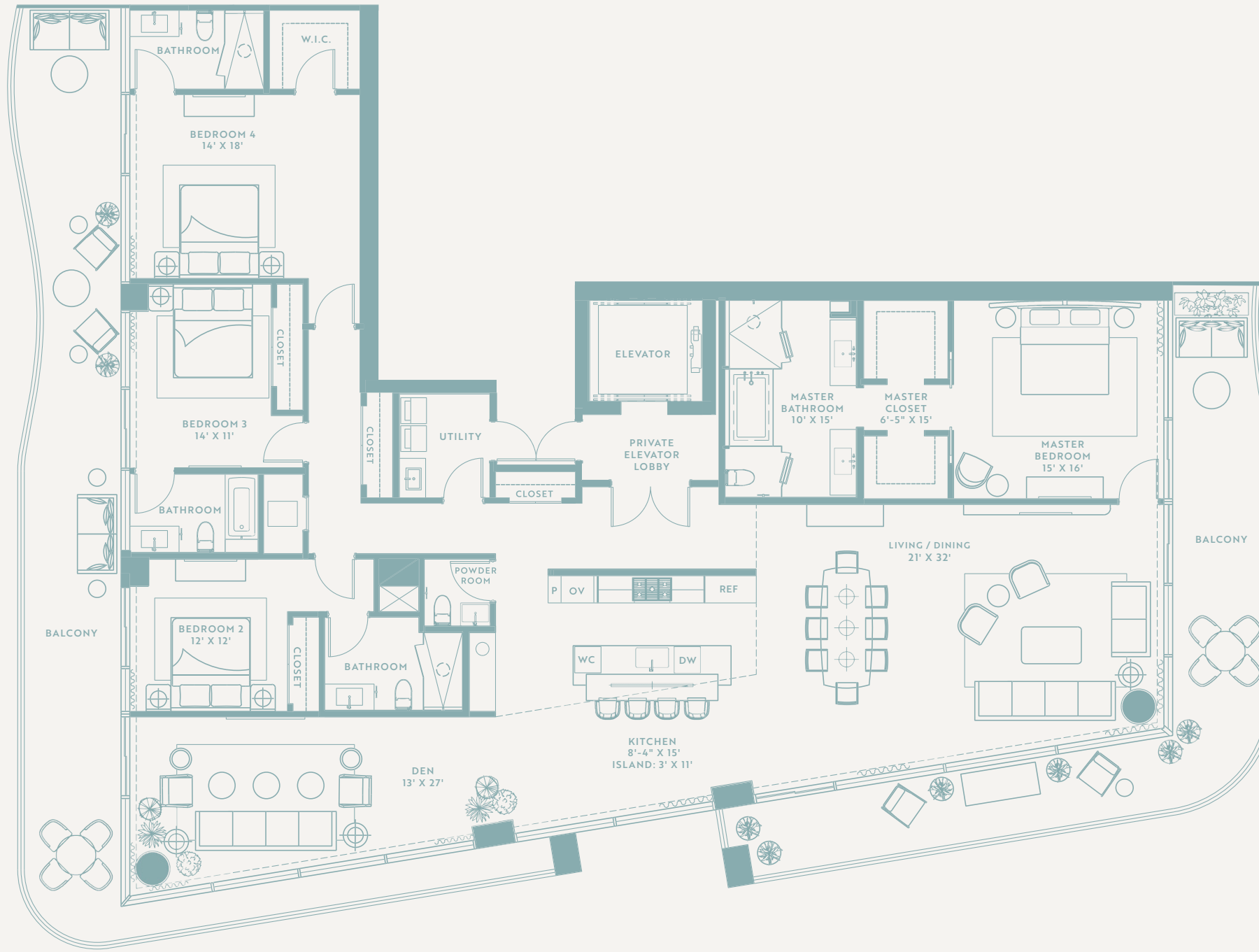


CASAMAR

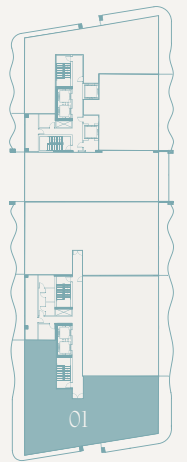
POMPAÑO BEACH

4 Bedroom + Den

INTERIOR 3,390 SF | EXTERIOR 1,034 SF | TOTAL 4,424 SF



Key Plate



ORAL REPRESENTATIONS CANNOT BE RELIED UPON AS CORRECTLY STATING REPRESENTATIONS OF THE DEVELOPER. FOR CORRECT REPRESENTATIONS, MAKE REFERENCE TO THE DOCUMENTS REQUIRED BY SECTION 718.503, FLORIDA STATUTES, TO BE FURNISHED BY A DEVELOPER TO A BUYER OR LESSEE. CASAMAR IS DEVELOPED BY PRH 900 NORTH OCEAN, LLC ("DEVELOPER") AND ANY CASAMAR OFFERING IS MADE ONLY BY THE DEVELOPER'S PROSPECTUS FOR THE CONDOMINIUM. THE DEVELOPER IS NOT INCORPORATED IN, LOCATED IN, NOR A RESIDENT OF, NEW YORK. THIS IS NOT INTENDED TO BE AN OFFER TO SELL, OR SOLICITATION OF AN OFFER TO BUY, CONDOMINIUM UNITS IN NEW YORK OR TO RESIDENTS OF NEW YORK, OR IN ANY OTHER JURISDICTION WHERE PROHIBITED BY LAW UNLESS THE CONDOMINIUM IS REGISTERED IN SUCH JURISDICTIONS OR EXEMPT. NO STATEMENT SHOULD BE RELIED UPON IF NOT MADE IN THE DEVELOPER'S PROSPECTUS. ARCHITECTURAL DESIGN ELEMENTS MAY VARY FROM CONCEPT TO ACTUAL CONSTRUCTION. ALL DEPICTIONS ARE CONCEPTUAL. DEVELOPER, PURSUANT TO A LICENSE AGREEMENT HAS A RIGHT TO USE THE TRADE NAMES, MARKS, AND LOGOS OF THE RELATED GROUP. CONSULT THE DEVELOPER'S PROSPECTUS FOR ALL TERMS, CONDITIONS, SPECIFICATIONS, AND UNIT DIMENSIONS. REPRODUCTION FOR PRIVATE OR COMMERCIAL USE IS NOT AUTHORIZED. 2022 © PRH 900 NORTH OCEAN LLC. UNLESS OTHERWISE NOTED, WITH ALL RIGHTS RESERVED.



CASAMAR

POMPANO BEACH

POMPANO BEACH LIKE YOU'VE NEVER SEEN

900 N OCEAN BLVD, POMPANO BEACH, FL 33062 | INQUIRIES 954.433.6080 | CASAMARBEACH.COM

Model 02



FLOORPLAN

Model 02

FLOORPLAN

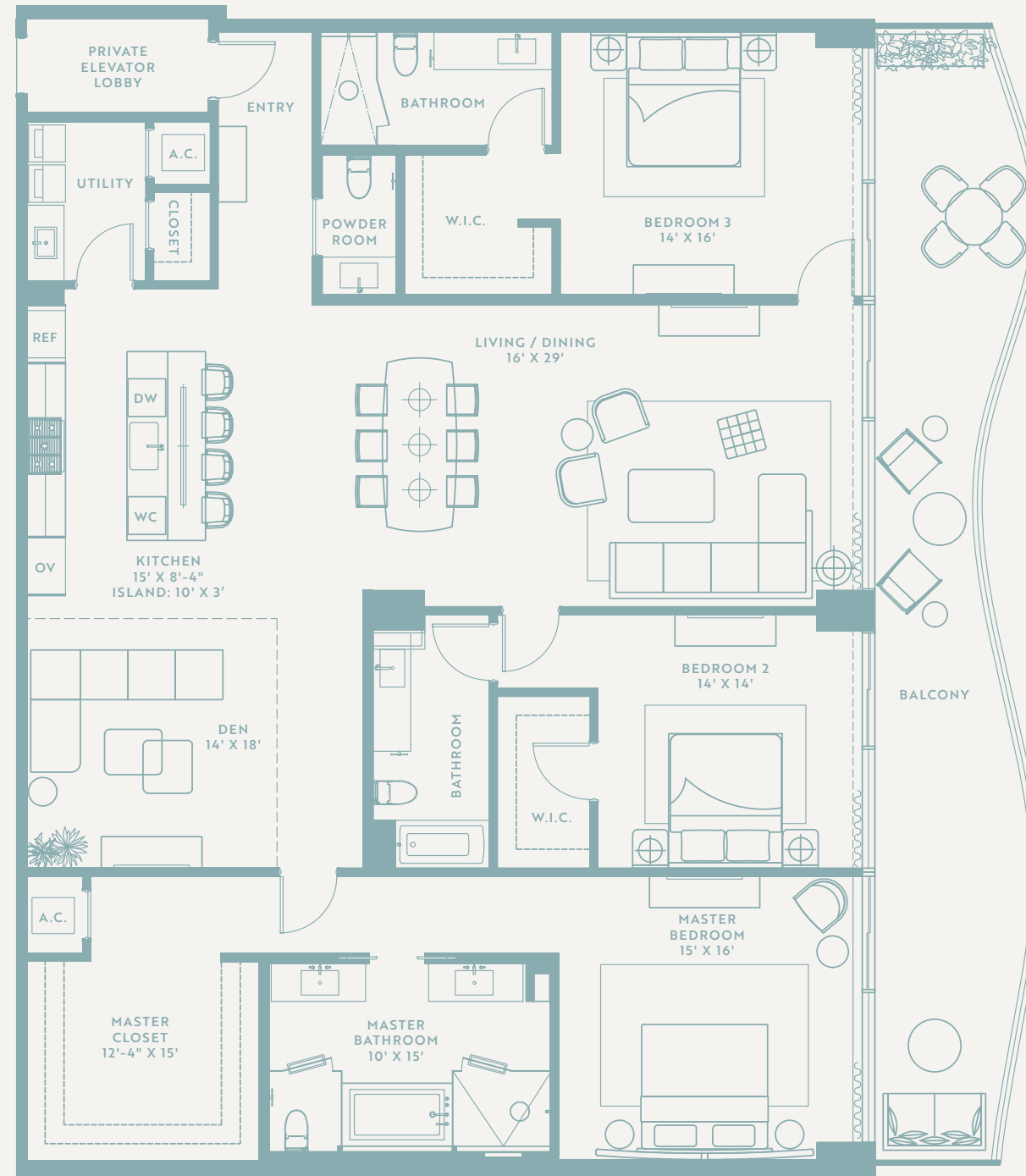


CASAMAR

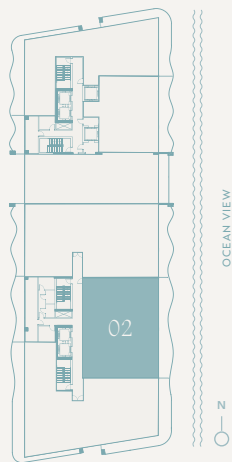
POMPAÑO BEACH

3 Bedroom + Den

INTERIOR 2,760 SF | EXTERIOR 416 SF | TOTAL 3,176 SF



Key Plate



ORAL REPRESENTATIONS CANNOT BE RELIED UPON AS CORRECTLY STATING REPRESENTATIONS OF THE DEVELOPER. FOR CORRECT REPRESENTATIONS, MAKE REFERENCE TO THE DOCUMENTS REQUIRED BY SECTION 718.503, FLORIDA STATUTES, TO BE FURNISHED BY A DEVELOPER TO A BUYER OR LESSEE. CASAMAR IS DEVELOPED BY PRH 900 NORTH OCEAN, LLC ("DEVELOPER") AND ANY CASAMAR OFFERING IS MADE ONLY BY THE DEVELOPER'S PROSPECTUS FOR THE CONDOMINIUM. THE DEVELOPER IS NOT INCORPORATED IN, LOCATED IN, NOR A RESIDENT OF, NEW YORK. THIS IS NOT INTENDED TO BE AN OFFER TO SELL, OR SOLICITATION OF AN OFFER TO BUY, CONDOMINIUM UNITS IN NEW YORK OR TO RESIDENTS OF NEW YORK, OR IN ANY OTHER JURISDICTION WHERE PROHIBITED BY LAW UNLESS THE CONDOMINIUM IS REGISTERED IN SUCH JURISDICTIONS OR EXEMPT. NO STATEMENT SHOULD BE RELIED UPON IF NOT MADE IN THE DEVELOPER'S PROSPECTUS. ARCHITECTURAL DESIGN ELEMENTS MAY VARY FROM CONCEPT TO ACTUAL CONSTRUCTION. ALL DEPICTIONS ARE CONCEPTUAL. DEVELOPER, PURSUANT TO A LICENSE AGREEMENT HAS A RIGHT TO USE THE TRADE NAMES, MARKS, AND LOGOS OF THE RELATED GROUP. CONSULT THE DEVELOPER'S PROSPECTUS FOR ALL TERMS, CONDITIONS, SPECIFICATIONS, AND UNIT DIMENSIONS. REPRODUCTION FOR PRIVATE OR COMMERCIAL USE IS NOT AUTHORIZED. 2022 © PRH 900 NORTH OCEAN LLC. UNLESS OTHERWISE NOTED, WITH ALL RIGHTS RESERVED.



CASAMAR

POMPANO BEACH

POMPANO BEACH LIKE YOU'VE NEVER SEEN

900 N OCEAN BLVD, POMPANO BEACH, FL 33062 | INQUIRIES 954.433.6080 | CASAMARBEACH.COM

Model 03



FLOORPLAN

Model 03

FLOORPLAN



CASAMAR

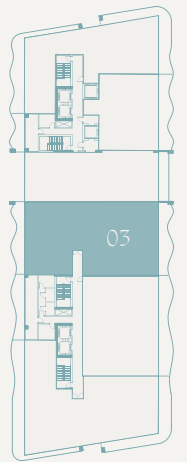
POMPANO BEACH

4 Bedroom + Den

INTERIOR 3,300 SF | EXTERIOR 562 SF | TOTAL 3,862 SF



Key Plate



ORAL REPRESENTATIONS CANNOT BE RELIED UPON AS CORRECTLY STATING REPRESENTATIONS OF THE DEVELOPER. FOR CORRECT REPRESENTATIONS, MAKE REFERENCE TO THE DOCUMENTS REQUIRED BY SECTION 718.503, FLORIDA STATUTES, TO BE FURNISHED BY A DEVELOPER TO A BUYER OR LESSEE. CASAMAR IS DEVELOPED BY PRH 900 NORTH OCEAN, LLC ("DEVELOPER") AND ANY CASAMAR OFFERING IS MADE ONLY BY THE DEVELOPER'S PROSPECTUS FOR THE CONDOMINIUM. THE DEVELOPER IS NOT INCORPORATED IN, LOCATED IN, NOR A RESIDENT OF, NEW YORK. THIS IS NOT INTENDED TO BE AN OFFER TO SELL, OR SOLICITATION OF AN OFFER TO BUY, CONDOMINIUM UNITS IN NEW YORK OR TO RESIDENTS OF NEW YORK, OR IN ANY OTHER JURISDICTION WHERE PROHIBITED BY LAW UNLESS THE CONDOMINIUM IS REGISTERED IN SUCH JURISDICTIONS OR EXEMPT. NO STATEMENT SHOULD BE RELIED UPON IF NOT MADE IN THE DEVELOPER'S PROSPECTUS. ARCHITECTURAL DESIGN ELEMENTS MAY VARY FROM CONCEPT TO ACTUAL CONSTRUCTION. ALL DEPICTIONS ARE CONCEPTUAL. DEVELOPER, PURSUANT TO A LICENSE AGREEMENT HAS A RIGHT TO USE THE TRADE NAMES, MARKS, AND LOGOS OF THE RELATED GROUP. CONSULT THE DEVELOPER'S PROSPECTUS FOR ALL TERMS, CONDITIONS, SPECIFICATIONS, AND UNIT DIMENSIONS. REPRODUCTION FOR PRIVATE OR COMMERCIAL USE IS NOT AUTHORIZED. 2022 © PRH 900 NORTH OCEAN LLC. UNLESS OTHERWISE NOTED, WITH ALL RIGHTS RESERVED.



CASAMAR

POMPANO BEACH

POMPANO BEACH LIKE YOU'VE NEVER SEEN

900 N OCEAN BLVD, POMPANO BEACH, FL 33062 | INQUIRIES 954.433.6080 | CASAMARBEACH.COM

Model 04



FLOORPLAN

Model 04

FLOORPLAN



CASAMAR

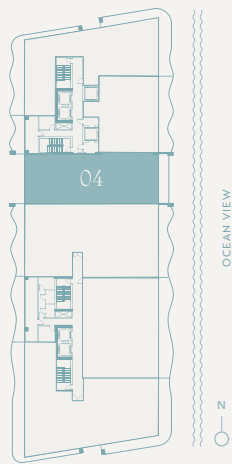
POMPAÑO BEACH

3 Bedroom + Den

INTERIOR 2,500 SF | EXTERIOR 161 SF | TOTAL 2,661 SF



Key Plate



ORAL REPRESENTATIONS CANNOT BE RELIED UPON AS CORRECTLY STATING REPRESENTATIONS OF THE DEVELOPER. FOR CORRECT REPRESENTATIONS, MAKE REFERENCE TO THE DOCUMENTS REQUIRED BY SECTION 718.503, FLORIDA STATUTES, TO BE FURNISHED BY A DEVELOPER TO A BUYER OR LESSEE. CASAMAR IS DEVELOPED BY PRH 900 NORTH OCEAN, LLC ("DEVELOPER") AND ANY CASAMAR OFFERING IS MADE ONLY BY THE DEVELOPER'S PROSPECTUS FOR THE CONDOMINIUM. THE DEVELOPER IS NOT INCORPORATED IN, LOCATED IN, NOR A RESIDENT OF, NEW YORK. THIS IS NOT INTENDED TO BE AN OFFER TO SELL, OR SOLICITATION OF AN OFFER TO BUY, CONDOMINIUM UNITS IN NEW YORK OR TO RESIDENTS OF NEW YORK, OR IN ANY OTHER JURISDICTION WHERE PROHIBITED BY LAW UNLESS THE CONDOMINIUM IS REGISTERED IN SUCH JURISDICTIONS OR EXEMPT. NO STATEMENT SHOULD BE RELIED UPON IF NOT MADE IN THE DEVELOPER'S PROSPECTUS. ARCHITECTURAL DESIGN ELEMENTS MAY VARY FROM CONCEPT TO ACTUAL CONSTRUCTION. ALL DEPICTIONS ARE CONCEPTUAL. DEVELOPER, PURSUANT TO A LICENSE AGREEMENT HAS A RIGHT TO USE THE TRADE NAMES, MARKS, AND LOGOS OF THE RELATED GROUP. CONSULT THE DEVELOPER'S PROSPECTUS FOR ALL TERMS, CONDITIONS, SPECIFICATIONS, AND UNIT DIMENSIONS. REPRODUCTION FOR PRIVATE OR COMMERCIAL USE IS NOT AUTHORIZED. 2022 © PRH 900 NORTH OCEAN LLC. UNLESS OTHERWISE NOTED, WITH ALL RIGHTS RESERVED.



CASAMAR

POMPANO BEACH

POMPANO BEACH LIKE YOU'VE NEVER SEEN

900 N OCEAN BLVD, POMPANO BEACH, FL 33062 | INQUIRIES 954.433.6080 | CASAMARBEACH.COM

Model 05



FLOORPLAN

Model 05

FLOORPLAN



CASAMAR

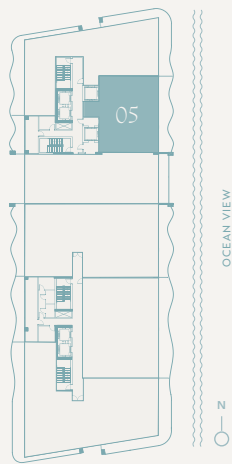
POMPANO BEACH

2 Bedroom + Den

INTERIOR 1,700 SF | EXTERIOR 320 SF | TOTAL 2,020 SF



Key Plate



ORAL REPRESENTATIONS CANNOT BE RELIED UPON AS CORRECTLY STATING REPRESENTATIONS OF THE DEVELOPER. FOR CORRECT REPRESENTATIONS, MAKE REFERENCE TO THE DOCUMENTS REQUIRED BY SECTION 718.503, FLORIDA STATUTES, TO BE FURNISHED BY A DEVELOPER TO A BUYER OR LESSEE. CASAMAR IS DEVELOPED BY PRH 900 NORTH OCEAN, LLC ("DEVELOPER") AND ANY CASAMAR OFFERING IS MADE ONLY BY THE DEVELOPER'S PROSPECTUS FOR THE CONDOMINIUM. THE DEVELOPER IS NOT INCORPORATED IN, LOCATED IN, NOR A RESIDENT OF, NEW YORK. THIS IS NOT INTENDED TO BE AN OFFER TO SELL, OR SOLICITATION OF AN OFFER TO BUY, CONDOMINIUM UNITS IN NEW YORK OR TO RESIDENTS OF NEW YORK, OR IN ANY OTHER JURISDICTION WHERE PROHIBITED BY LAW UNLESS THE CONDOMINIUM IS REGISTERED IN SUCH JURISDICTIONS OR EXEMPT. NO STATEMENT SHOULD BE RELIED UPON IF NOT MADE IN THE DEVELOPER'S PROSPECTUS. ARCHITECTURAL DESIGN ELEMENTS MAY VARY FROM CONCEPT TO ACTUAL CONSTRUCTION. ALL DEPICTIONS ARE CONCEPTUAL. DEVELOPER, PURSUANT TO A LICENSE AGREEMENT HAS A RIGHT TO USE THE TRADE NAMES, MARKS, AND LOGOS OF THE RELATED GROUP. CONSULT THE DEVELOPER'S PROSPECTUS FOR ALL TERMS, CONDITIONS, SPECIFICATIONS, AND UNIT DIMENSIONS. REPRODUCTION FOR PRIVATE OR COMMERCIAL USE IS NOT AUTHORIZED. 2022 © PRH 900 NORTH OCEAN LLC. UNLESS OTHERWISE NOTED, WITH ALL RIGHTS RESERVED.



CASAMAR

POMPANO BEACH

POMPANO BEACH LIKE YOU'VE NEVER SEEN

900 N OCEAN BLVD, POMPANO BEACH, FL 33062 | INQUIRIES 954.433.6080 | CASAMARBEACH.COM

Model 06



FLOORPLAN

Model 06

FLOORPLAN



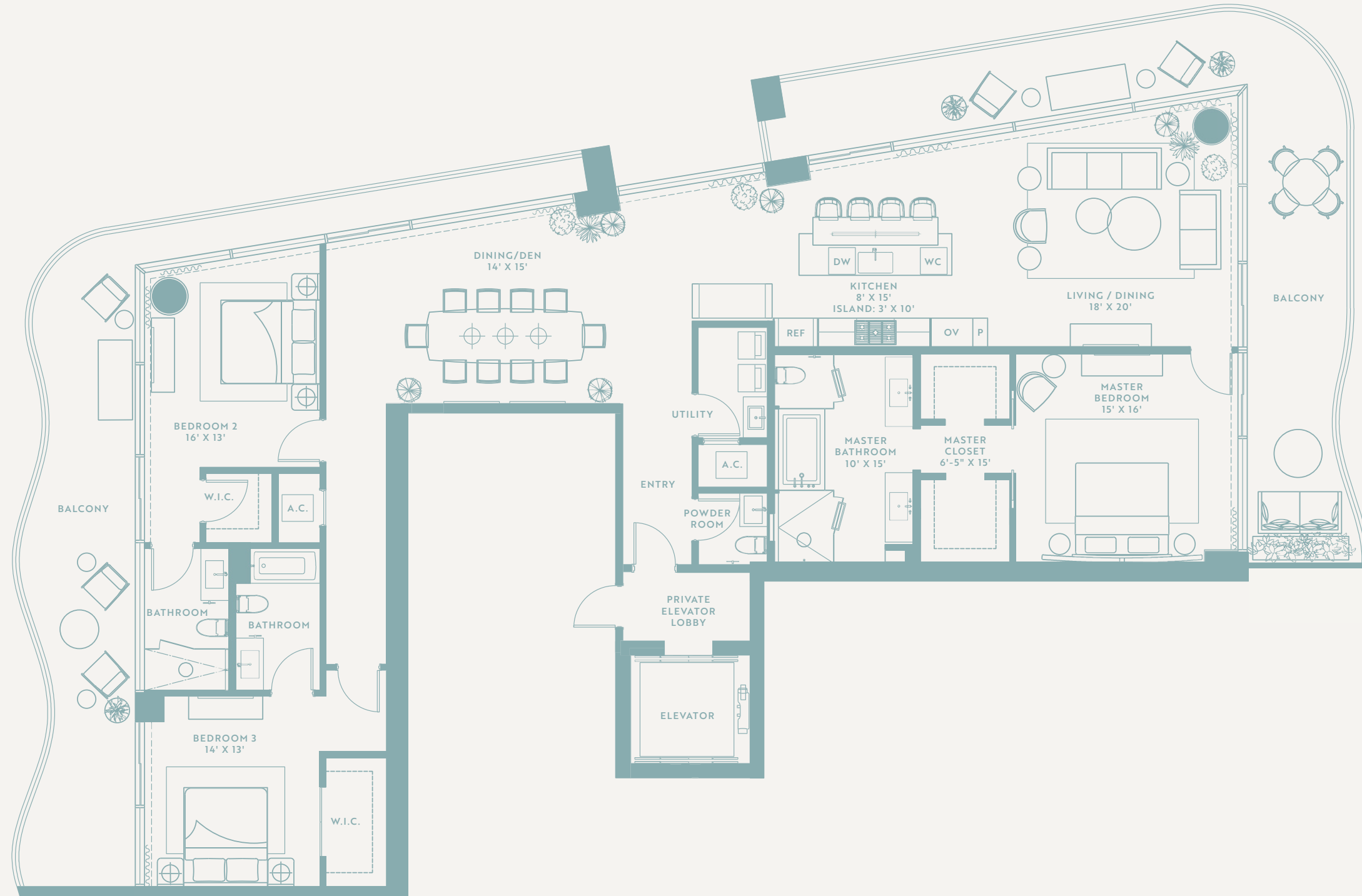
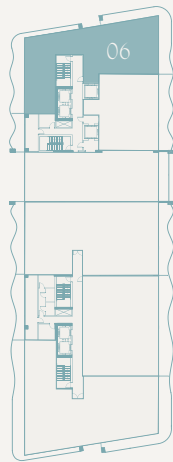
CASAMAR

POMPAÑO BEACH

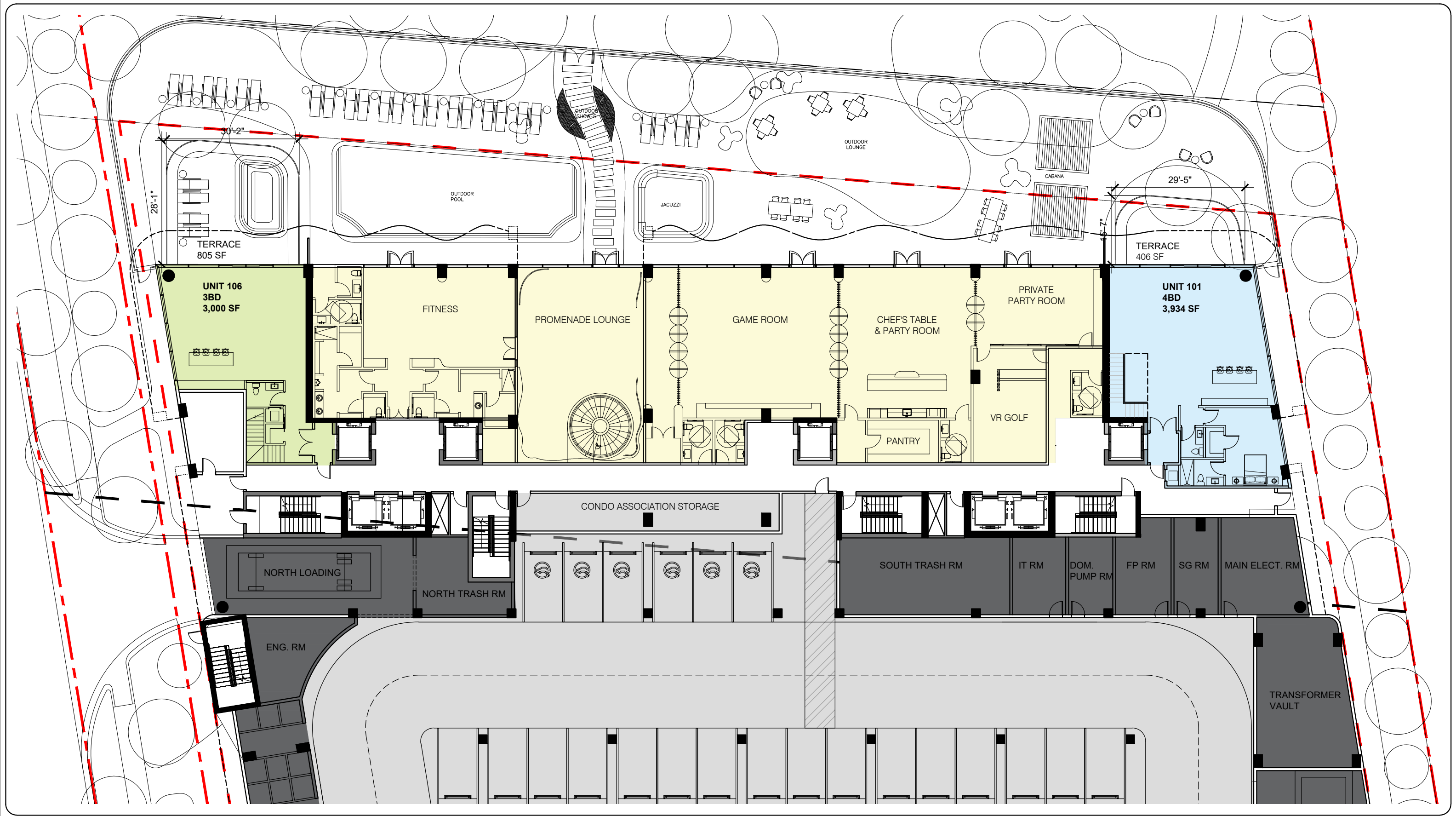
3 Bedroom + Den

INTERIOR 2,590 SF | EXTERIOR 865 SF | TOTAL 3,455 SF

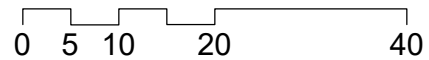
Key Plate



ORAL REPRESENTATIONS CANNOT BE RELIED UPON AS CORRECTLY STATING REPRESENTATIONS OF THE DEVELOPER. FOR CORRECT REPRESENTATIONS, MAKE REFERENCE TO THE DOCUMENTS REQUIRED BY SECTION 718.503, FLORIDA STATUTES, TO BE FURNISHED BY A DEVELOPER TO A BUYER OR LESSEE. CASAMAR IS DEVELOPED BY PRH 900 NORTH OCEAN, LLC ("DEVELOPER") AND ANY CASAMAR OFFERING IS MADE ONLY BY THE DEVELOPER'S PROSPECTUS FOR THE CONDOMINIUM. THE DEVELOPER IS NOT INCORPORATED IN, LOCATED IN, NOR A RESIDENT OF, NEW YORK. THIS IS NOT INTENDED TO BE AN OFFER TO SELL, OR SOLICITATION OF AN OFFER TO BUY, CONDOMINIUM UNITS IN NEW YORK OR TO RESIDENTS OF NEW YORK, OR IN ANY OTHER JURISDICTION WHERE PROHIBITED BY LAW UNLESS THE CONDOMINIUM IS REGISTERED IN SUCH JURISDICTIONS OR EXEMPT. NO STATEMENT SHOULD BE RELIED UPON IF NOT MADE IN THE DEVELOPER'S PROSPECTUS. ARCHITECTURAL DESIGN ELEMENTS MAY VARY FROM CONCEPT TO ACTUAL CONSTRUCTION. ALL DEPICTIONS ARE CONCEPTUAL. DEVELOPER, PURSUANT TO A LICENSE AGREEMENT HAS A RIGHT TO USE THE TRADE NAMES, MARKS, AND LOGOS OF THE RELATED GROUP. CONSULT THE DEVELOPER'S PROSPECTUS FOR ALL TERMS, CONDITIONS, SPECIFICATIONS, AND UNIT DIMENSIONS. REPRODUCTION FOR PRIVATE OR COMMERCIAL USE IS NOT AUTHORIZED. 2022 © PRH 900 NORTH OCEAN LLC. UNLESS OTHERWISE NOTED, WITH ALL RIGHTS RESERVED.



CASAMAR
900 N OCEAN



LEVEL : 1

2022.01.20

ALL DESIGNS INDICATED IN THESE DRAWINGS ARE PROPERTY OF ARQUITECTONICA INTERNATIONAL CORP. NO COPIES, TRANSMISSIONS, REPRODUCTIONS OR ELECTRONIC MANIPULATION OF ANY PORTION OF THESE DRAWINGS IN THE WHOLE OR IN PART ARE TO BE MADE WITHOUT THE EXPRESS WRITTEN AUTHORIZATION OF ARQUITECTONICA INTERNATIONAL CORP. DESIGN INTENT SHOWN IS SUBJECT TO REVIEW AND APPROVAL OF ALL APPLICABLE LOCAL AND GOVERNMENTAL AUTHORITIES HAVING JURISDICTION. ALL COPYRIGHTS RESERVED © 2021. THE DATA INCLUDED IN THIS STUDY IS CONCEPTUAL IN NATURE AND WILL CONTINUE TO BE MODIFIED THROUGHOUT THE COURSE OF THE PROJECTS DEVELOPMENT WITH THE EVENTUAL INTEGRATION OF STRUCTURAL, MEP AND LIFE SAFETY SYSTEMS. AS THESE ARE FURTHER REFINED, THE NUMBERS WILL BE ADJUSTED ACCORDINGLY.

ARQUITECTONICA

UNIT 106
3BD
3,000 SF

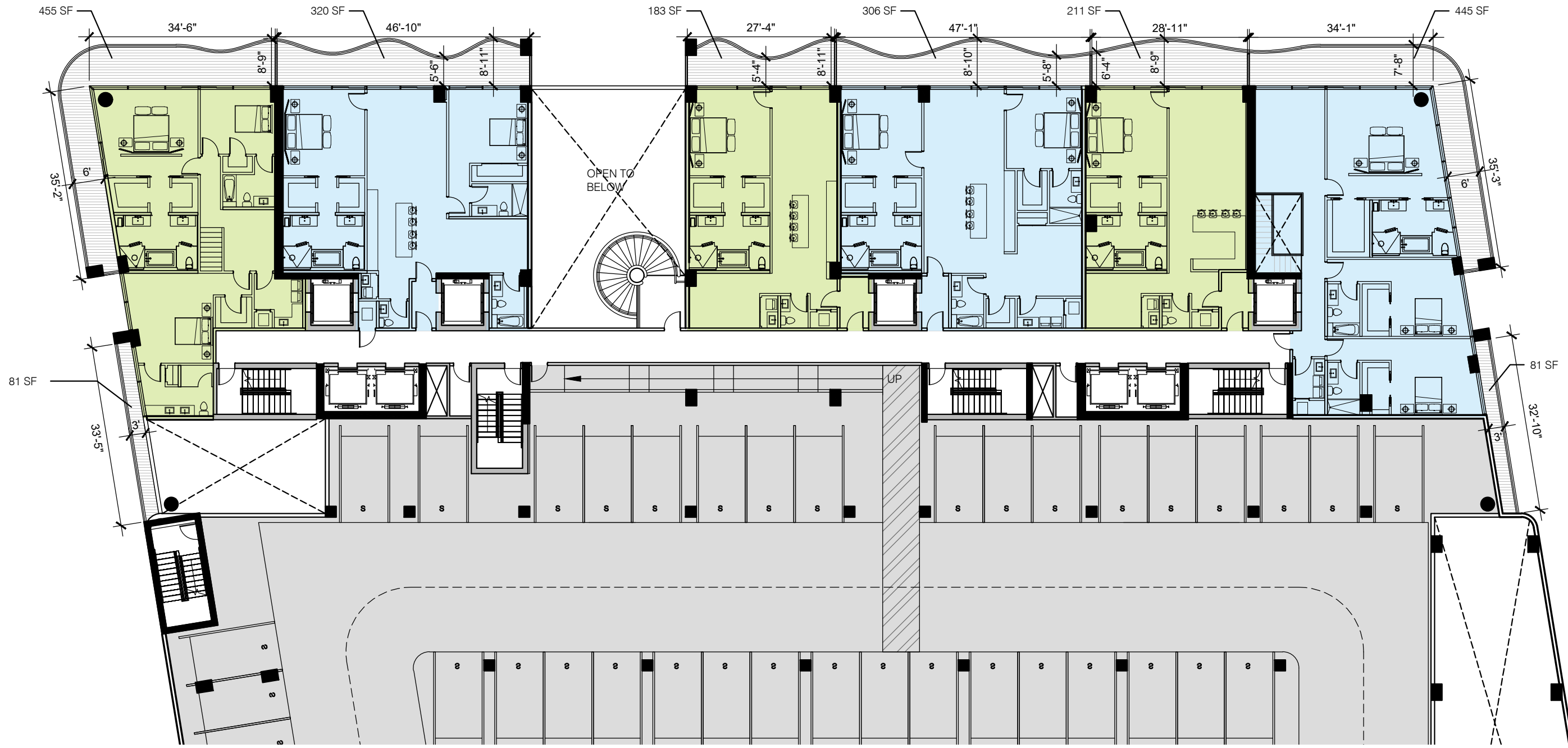
UNIT 205
2BD
1,880 SF

UNIT 204
1BD
1,330 SF

UNIT 203
2BD
1,900 SF

UNIT 202
1BD
1,350 SF

UNIT 101
4BD
3,934 SF



CASAMAR
900 N OCEAN



0 5 10 20 40



GARAGE & UNIT LEVEL : 2

2022.01.20

ALL DESIGNS INDICATED IN THESE DRAWINGS ARE PROPERTY OF ARQUITECTONICA INTERNATIONAL CORP. NO COPIES, TRANSMISSIONS, REPRODUCTIONS OR ELECTRONIC MANIPULATION OF ANY PORTION OF THESE DRAWINGS IN THE WHOLE OR IN PART ARE TO BE MADE WITHOUT THE EXPRESS OF WRITTEN AUTHORIZATION OF ARQUITECTONICA INTERNATIONAL CORP. DESIGN INTENT SHOWN IS SUBJECT TO REVIEW AND APPROVAL OF ALL APPLICABLE LOCAL AND GOVERNMENTAL AUTHORITIES HAVING JURISDICTION. ALL COPYRIGHTS RESERVED © 2021. THE DATA INCLUDED IN THIS STUDY IS CONCEPTUAL IN NATURE AND WILL CONTINUE TO BE MODIFIED THROUGHOUT THE COURSE OF THE PROJECTS DEVELOPMENT WITH THE EVENTUAL INTEGRATION OF STRUCTURAL, MEP AND LIFE SAFETY SYSTEMS. AS THESE ARE FURTHER REFINED, THE NUMBERS WILL BE ADJUSTED ACCORDINGLY.

ARQUITECTONICA

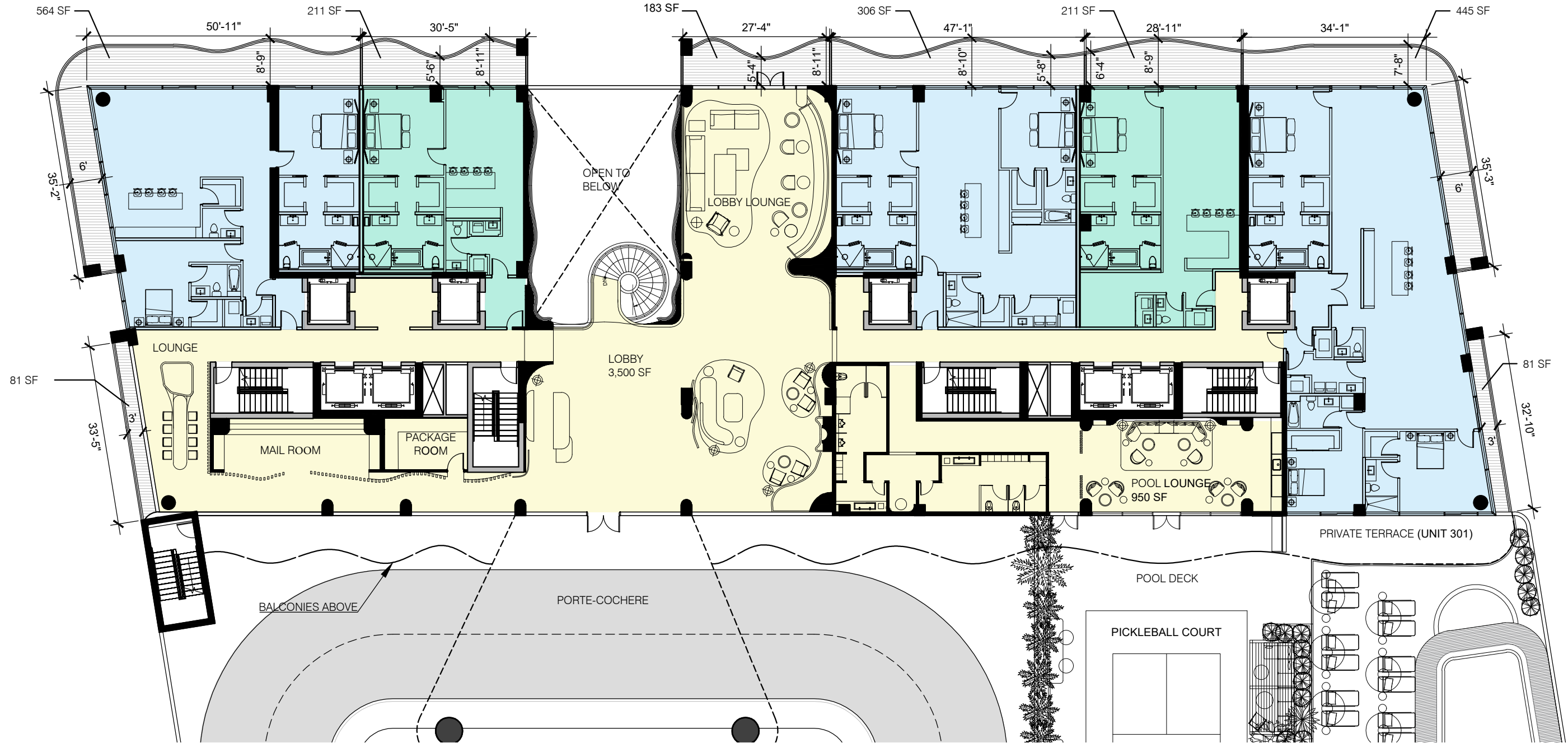
UNIT 306
2BD
2,050 SF

UNIT 305
1BD
1,085 SF

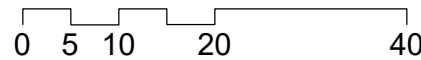
UNIT 303
2BD
1,900 SF

UNIT 302
1BD
1,350 SF

UNIT 301
3BD
2,875 SF



CASAMAR
900 N OCEAN



LOBBY & UNIT LEVEL: 3

2022.01.20

ALL DESIGNS INDICATED IN THESE DRAWINGS ARE PROPERTY OF ARQUITECTONICA INTERNATIONAL CORP. NO COPIES, TRANSMISSIONS, REPRODUCTIONS OR ELECTRONIC MANIPULATION OF ANY PORTION OF THESE DRAWINGS IN THE WHOLE OR IN PART ARE TO BE MADE WITHOUT THE EXPRESS OF WRITTEN AUTHORIZATION OF ARQUITECTONICA INTERNATIONAL CORP. DESIGN INTENT SHOWN IS SUBJECT TO REVIEW AND APPROVAL OF ALL APPLICABLE LOCAL AND GOVERNMENTAL AUTHORITIES HAVING JURISDICTION. ALL COPYRIGHTS RESERVED © 2021. THE DATA INCLUDED IN THIS STUDY IS CONCEPTUAL IN NATURE AND WILL CONTINUE TO BE MODIFIED THROUGHOUT THE COURSE OF THE PROJECTS DEVELOPMENT WITH THE EVENTUAL INTEGRATION OF STRUCTURAL, MEP AND LIFE SAFETY SYSTEMS. AS THESE ARE FURTHER REFINED, THE NUMBERS WILL BE ADJUSTED ACCORDINGLY.

ARQUITECTONICA



CASAMAR

POMPANO BEACH

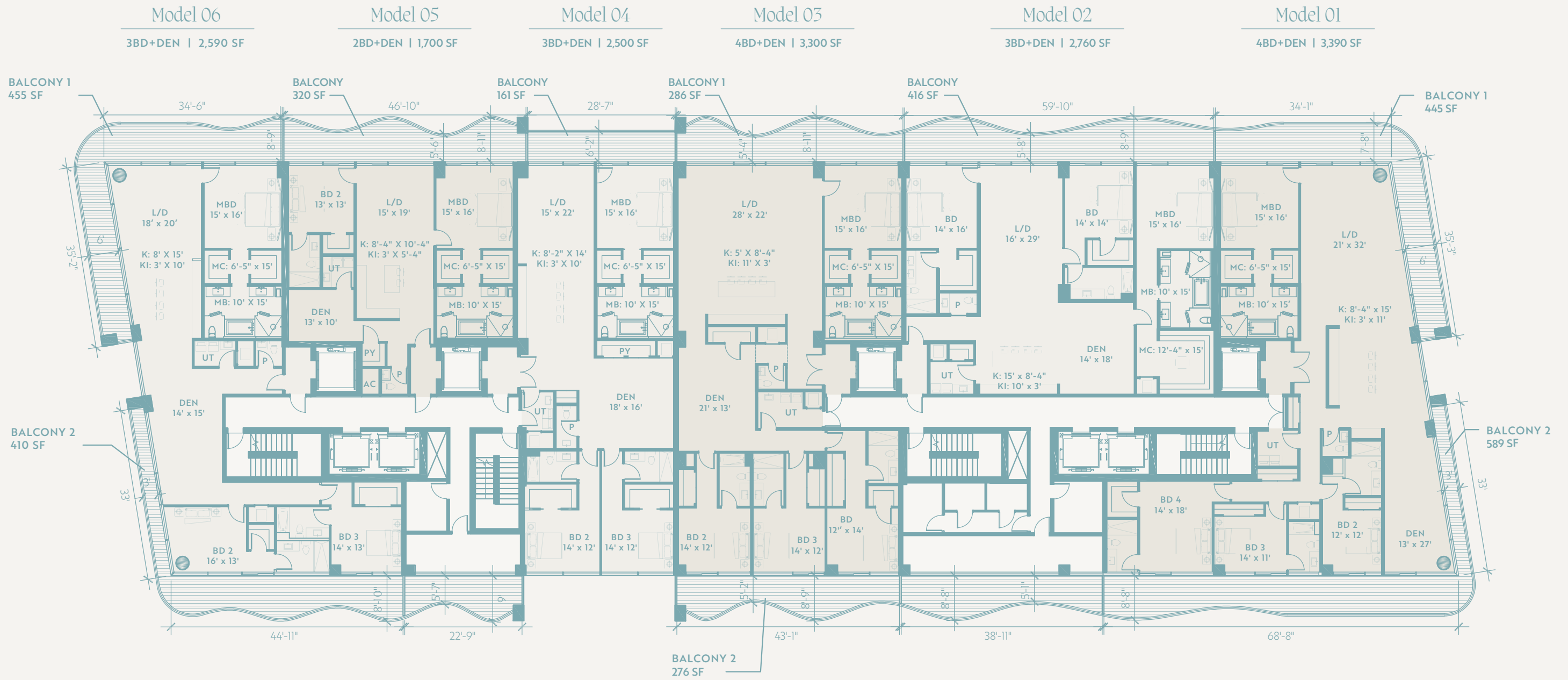
POMPANO BEACH LIKE YOU'VE NEVER SEEN

900 N OCEAN BLVD, POMPANO BEACH, FL 33062 | INQUIRIES 954.433.6080 | CASAMARBEACH.COM

Floorplate



FLOORS 4-12



ORAL REPRESENTATIONS CANNOT BE RELIED UPON AS CORRECTLY STATING REPRESENTATIONS OF THE DEVELOPER. FOR CORRECT REPRESENTATIONS, MAKE REFERENCE TO THE DOCUMENTS REQUIRED BY SECTION 718.503, FLORIDA STATUTES, TO BE FURNISHED BY A DEVELOPER TO A BUYER OR LESSEE. CASAMAR IS DEVELOPED BY PRH 900 NORTH OCEAN, LLC ("DEVELOPER") AND ANY CASAMAR OFFERING IS MADE ONLY BY THE DEVELOPER'S PROSPECTUS FOR THE CONDOMINIUM. THE DEVELOPER IS NOT INCORPORATED IN, LOCATED IN, NOR A RESIDENT OF, NEW YORK. THIS IS NOT INTENDED TO BE AN OFFER TO SELL, OR SOLICITATION OF AN OFFER TO BUY, CONDOMINIUM UNITS IN NEW YORK OR TO RESIDENTS OF NEW YORK, OR IN ANY OTHER JURISDICTION WHERE PROHIBITED BY LAW UNLESS THE CONDOMINIUM IS REGISTERED IN SUCH JURISDICTIONS OR EXEMPT. NO STATEMENT SHOULD BE RELIED UPON IF NOT MADE IN THE DEVELOPER'S PROSPECTUS. ARCHITECTURAL DESIGN ELEMENTS MAY VARY FROM CONCEPT TO ACTUAL CONSTRUCTION. ALL DEPICTIONS ARE CONCEPTUAL. DEVELOPER, PURSUANT TO A LICENSE AGREEMENT HAS A RIGHT TO USE THE TRADE NAMES, MARKS, AND LOGOS OF THE RELATED GROUP. CONSULT THE DEVELOPER'S PROSPECTUS FOR ALL TERMS, CONDITIONS, SPECIFICATIONS, AND UNIT DIMENSIONS. REPRODUCTION FOR PRIVATE OR COMMERCIAL USE IS NOT AUTHORIZED. 2022 © PRH 900 NORTH OCEAN LLC. UNLESS OTHERWISE NOTED, WITH ALL RIGHTS RESERVED.

06 LINE
3BD
2,590 SF

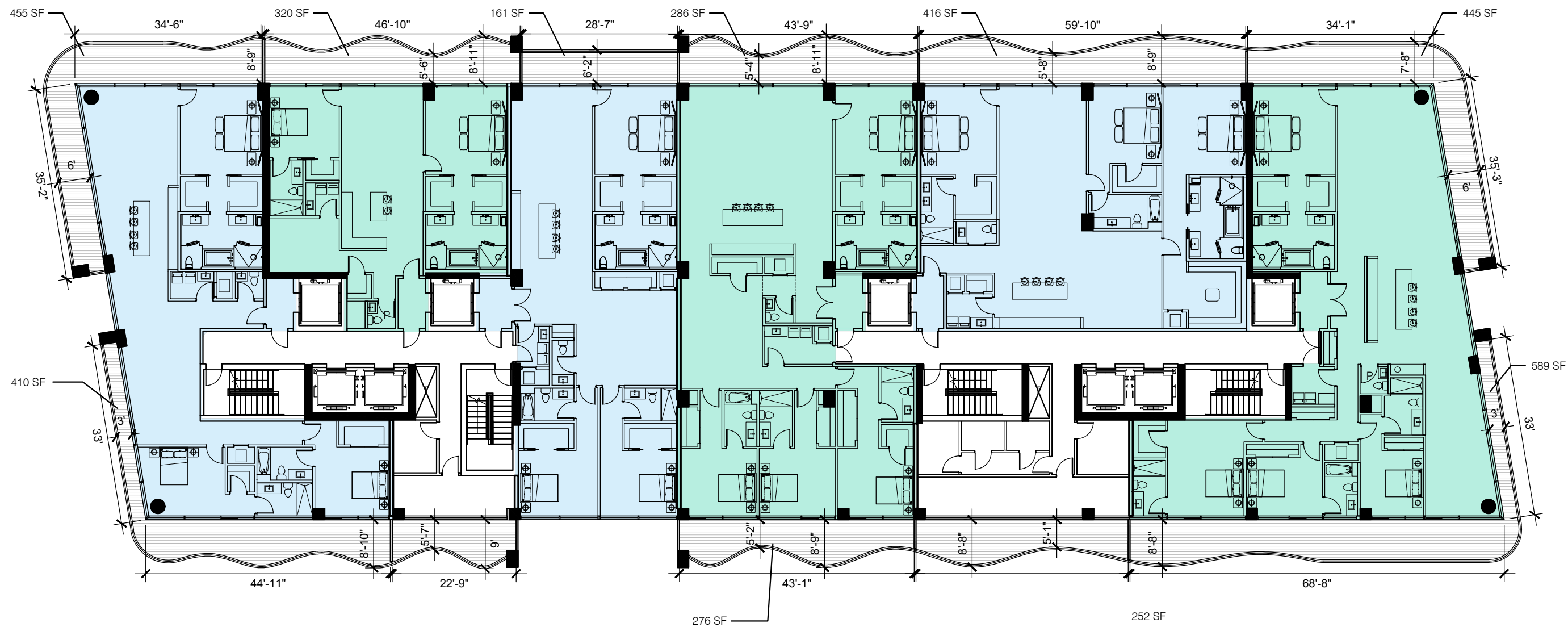
05 LINE
2BD
1,700 SF

04 LINE
3BD
2,500 SF

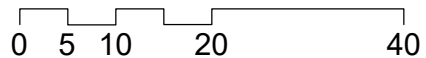
03 LINE
4BD
3,300 SF

02 LINE
3BD
2,760 SF

01 LINE
4BD
3,390 SF



CASAMAR
900 N OCEAN



TYPICAL UNIT LEVELS: 4-20

2022.01.20

ALL DESIGNS INDICATED IN THESE DRAWINGS ARE PROPERTY OF ARQUITECTONICA INTERNATIONAL CORP. NO COPIES, TRANSMISSIONS, REPRODUCTIONS OR ELECTRONIC MANIPULATION OF ANY PORTION OF THESE DRAWINGS IN THE WHOLE OR IN PART ARE TO BE MADE WITHOUT THE EXPRESS OF WRITTEN AUTHORIZATION OF ARQUITECTONICA INTERNATIONAL CORP. DESIGN INTENT SHOWN IS SUBJECT TO REVIEW AND APPROVAL OF ALL APPLICABLE LOCAL AND GOVERNMENTAL AUTHORITIES HAVING JURISDICTION. ALL COPYRIGHTS RESERVED © 2021. THE DATA INCLUDED IN THIS STUDY IS CONCEPTUAL IN NATURE AND WILL CONTINUE TO BE MODIFIED THROUGHOUT THE COURSE OF THE PROJECTS DEVELOPMENT WITH THE EVENTUAL INTEGRATION OF STRUCTURAL, MEP AND LIFE SAFETY SYSTEMS. AS THESE ARE FURTHER REFINED, THE NUMBERS WILL BE ADJUSTED ACCORDINGLY.

ARQUITECTONICA