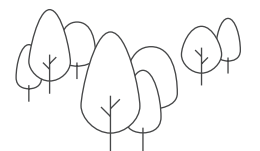
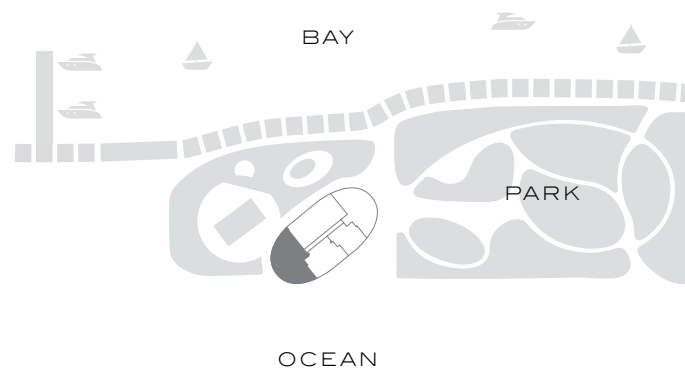


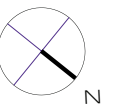
Residence 01

INTERIOR: 3,186 SQ. FT. 296 SQ. M.
 BALCONY: 1,083 SQ. FT. 101 SQ. M.
 TOTAL: 4,269 SQ. FT. 397 SQ. M.

4 BEDROOMS
 4 BATHROOMS
 POWDER ROOM
 PRIVATE TERRACE



PARK

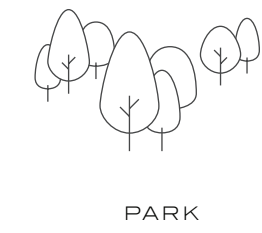
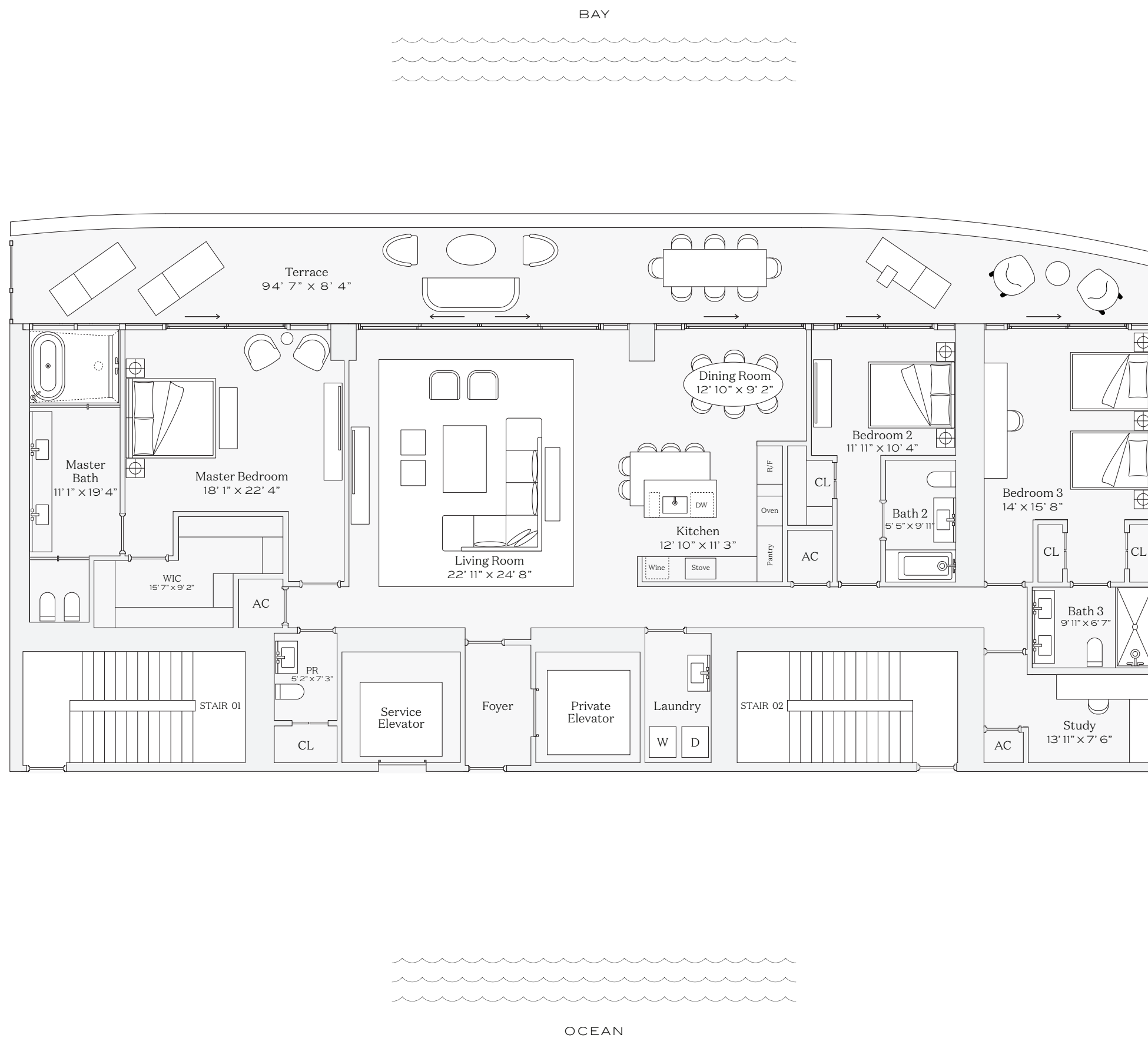
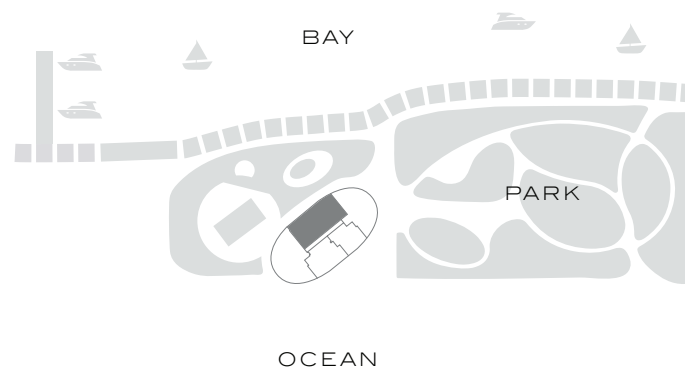


This condominium is being developed by TCH 500 Alton, LLC, a Florida limited liability company ("Developer"), which has a limited right to use the trademarked names and logos of Terra. Any and all statements, disclosures and/or representations shall be deemed made by Developer and not by Terra and you agree to look solely to Developer (and not to Terra and/or its affiliates) with respect to any and all matters relating to the marketing and/or development of the Condominium and with respect to the sales of units in the Condominium. Oral representations cannot be relied upon as correctly stating the representations of the developer. For correct representations, make reference to this brochure and to the documents required by section 718.503, Florida statutes, to be furnished by a developer to a buyer or lessee. These materials are not intended to be an offer to sell, or solicitation to buy a unit in the condominium. Such an offering shall only be made pursuant to the prospectus (offering circular) for the condominium and no statements should be relied upon unless made in the prospectus or in the applicable purchase agreement. In no event shall any solicitation, offer or sale of a unit in the condominium be made in, or to residents of, any state or country in which such activity would be unlawful. The project graphics, renderings and text provided herein are copyrighted works owned by the Developer. All rights reserved. Unauthorized reproduction, display or other dissemination of such materials is strictly prohibited and constitutes copyright infringement. No real estate broker is authorized to make any representations or other statements regarding the projects, and no agreements with, deposits paid to or other arrangements made with any real estate broker are or shall be binding on the Developer.

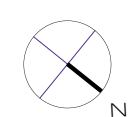
Residence 02

INTERIOR: 2,930 SQ. FT. 273 SQ. M.
 BALCONY: 782 SQ. FT. 73 SQ. M.
 TOTAL: 3,712 SQ. FT. 346 SQ. M.

- 3 BEDROOMS
- 3 BATHROOMS
- POWDER ROOM
- PRIVATE TERRACE



PARK

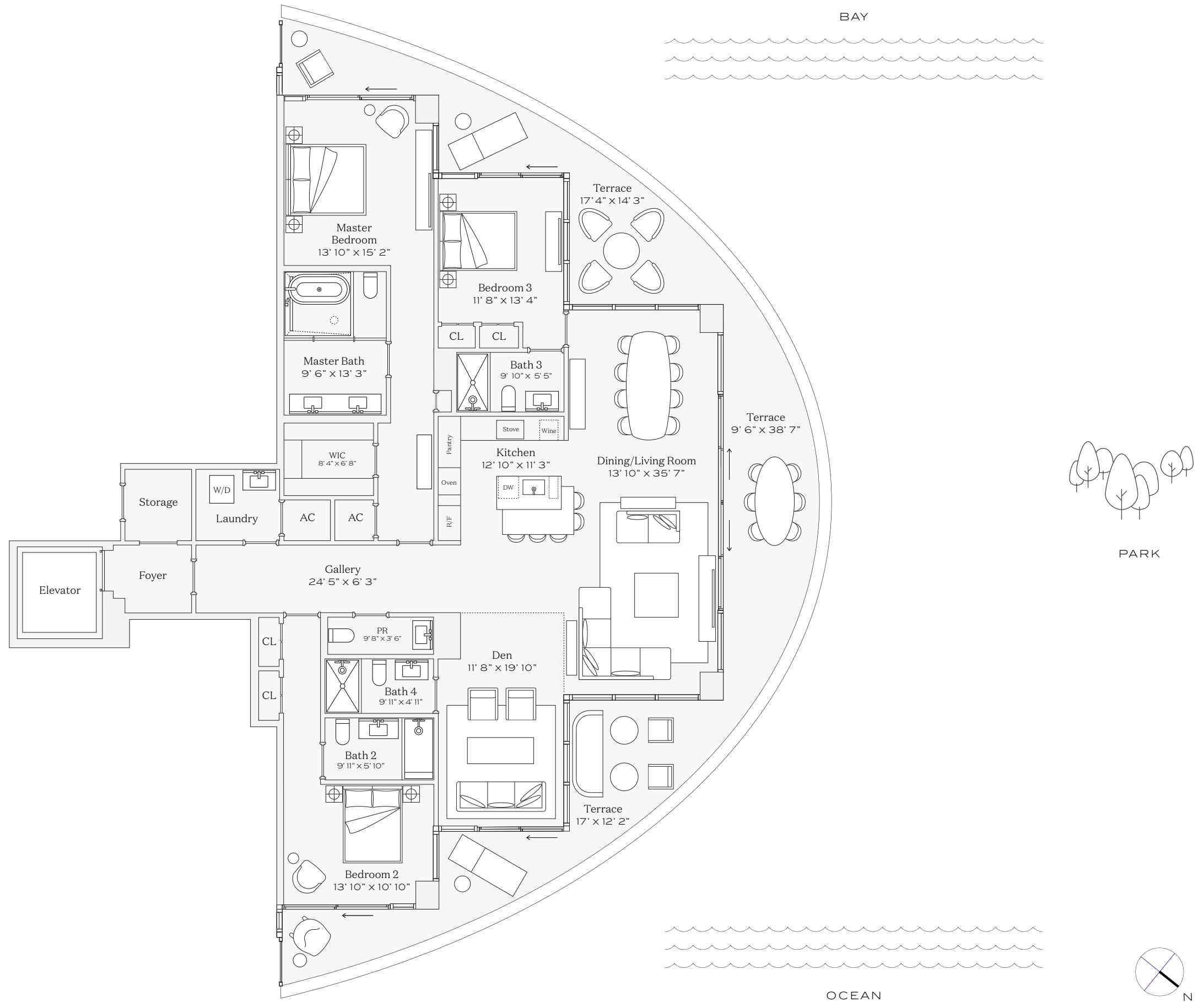
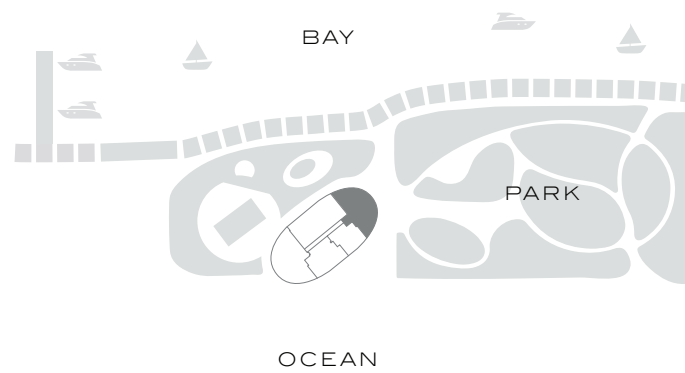


This condominium is being developed by TCH 500 Alton, LLC, a Florida limited liability company ("Developer"), which has a limited right to use the trademarked names and logos of Terra. Any and all statements, disclosures and/or representations shall be deemed made by Developer and not by Terra and you agree to look solely to Developer (and not to Terra and/or its affiliates) with respect to any and all matters relating to the marketing and/or development of the Condominium and with respect to the sales of units in the Condominium. Oral representations cannot be relied upon as correctly stating the representations of the developer. For correct representations, make reference to this brochure and to the documents required by section 718.503, Florida statutes, to be furnished by a developer to a buyer or lessee. These materials are not intended to be an offer to sell, or solicitation to buy a unit in the condominium. Such an offering shall only be made pursuant to the prospectus (offering circular) for the condominium and no statements should be relied upon unless made in the prospectus or in the applicable purchase agreement. In no event shall any solicitation, offer or sale of a unit in the condominium be made in, or to residents of, any state or country in which such activity would be unlawful. The project graphics, renderings and text provided herein are copyrighted works owned by the Developer. All rights reserved. Unauthorized reproduction, display or other dissemination of such materials is strictly prohibited and constitutes copyright infringement. No real estate broker is authorized to make any representations or other statements regarding the projects, and no agreements with, deposits paid to or other arrangements made with any real estate broker are or shall be binding on the Developer.

Residence 03

INTERIOR: 2,615 SQ. FT. 242 SQ. M.
 BALCONY: 984 SQ. FT. 92 SQ. M.
 TOTAL: 3,599 SQ. FT. 334 SQ. M.

3 BEDROOMS
 4 BATHROOMS
 POWDER ROOM
 PRIVATE TERRACE

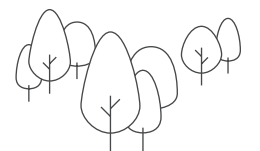
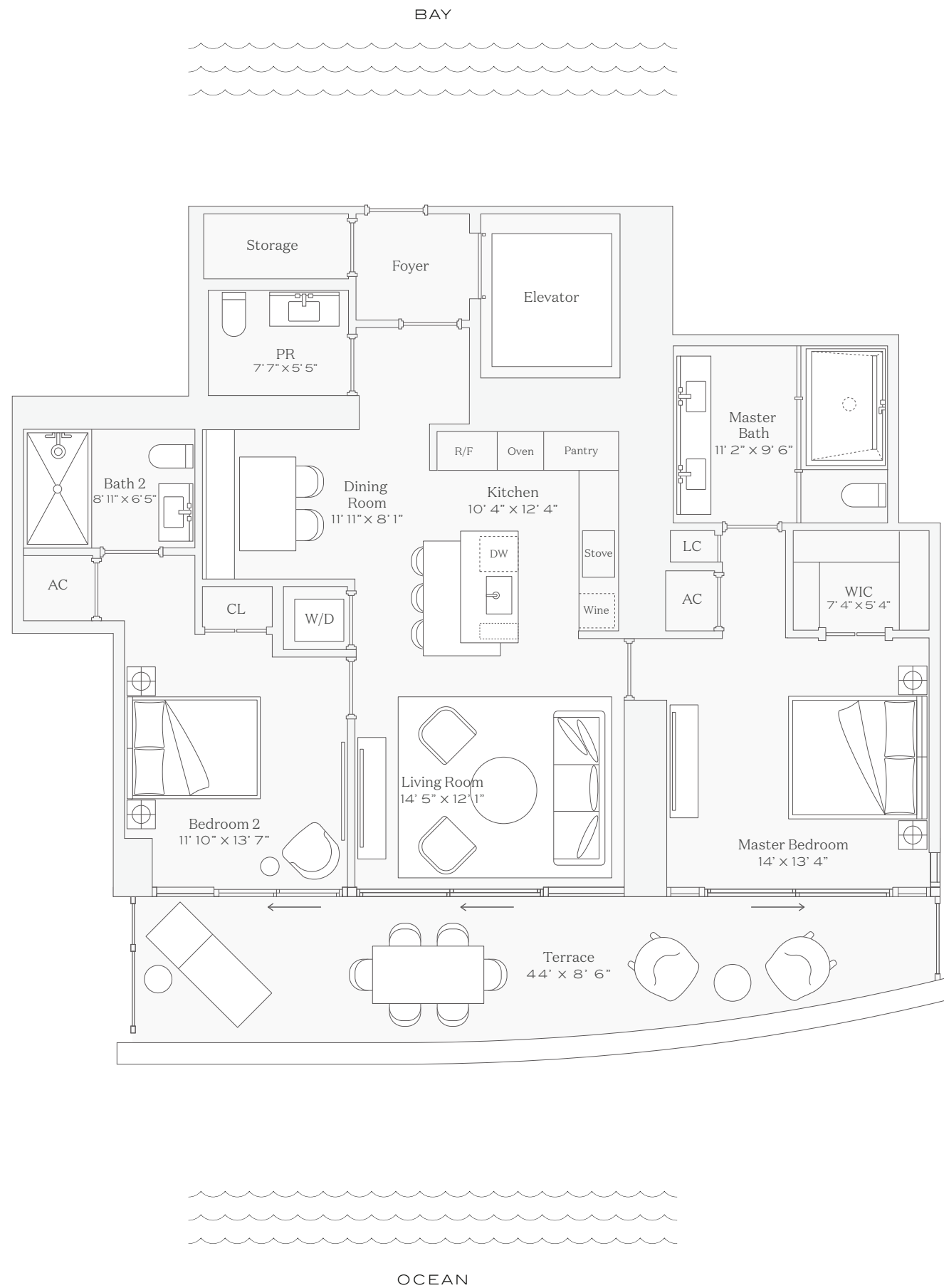
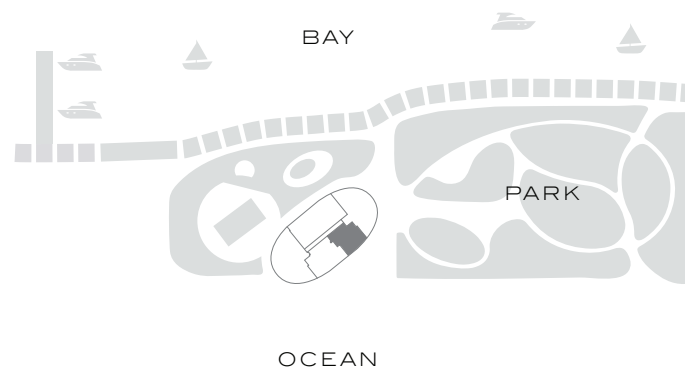


This condominium is being developed by TCH 500 Alton, LLC, a Florida limited liability company ("Developer"), which has a limited right to use the trademarked names and logos of Terra. Any and all statements, disclosures and/or representations shall be deemed made by Developer and not by Terra and you agree to look solely to Developer (and not to Terra and/or its affiliates) with respect to any and all matters relating to the marketing and/or development of the Condominium and with respect to the sales of units in the Condominium. Oral representations cannot be relied upon as correctly stating the representations of the developer. For correct representations, make reference to this brochure and to the documents required by section 718.503, Florida statutes, to be furnished by a developer to a buyer or lessee. These materials are not intended to be an offer to sell, or solicitation to buy a unit in the condominium. Such an offering shall only be made pursuant to the prospectus (offering circular) for the condominium and no statements should be relied upon unless made in the applicable purchase agreement. In no event shall any solicitation, offer or sale of a unit in the condominium be made in, or to residents of, any state or country in which such activity would be unlawful. The project graphics, renderings and text provided herein are copyrighted works owned by the Developer. All rights reserved. Unauthorized reproduction, display or other dissemination of such materials is strictly prohibited and constitutes copyright infringement. No real estate broker is authorized to make any representations or other statements regarding the projects, and no agreements with, deposits paid to or other arrangements made with any real estate broker are or shall be binding on the Developer.

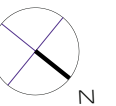
Residence 04

INTERIOR: 1,434 SQ. FT. 133 SQ. M.
 BALCONY: 344 SQ. FT. 32 SQ. M.
 TOTAL: 1,778 SQ. FT. 165 SQ. M.

2 BEDROOMS
 2 BATHROOMS
 POWDER ROOM
 PRIVATE TERRACE



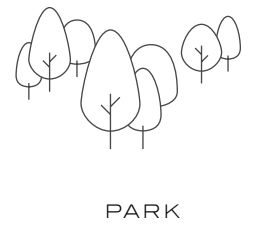
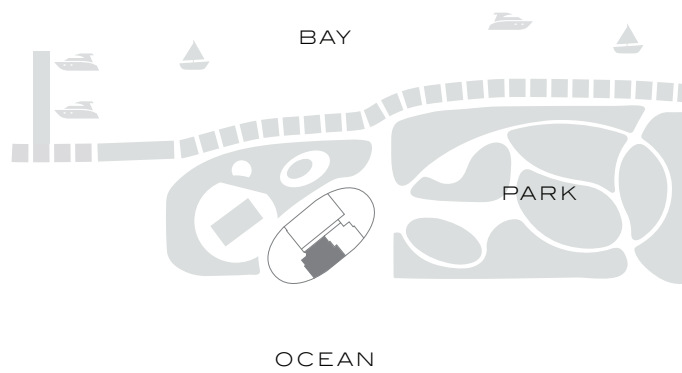
PARK



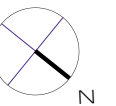
Residence 05

INTERIOR: 1,969 SQ. FT. 182 SQ. M.
 BALCONY: 539 SQ. FT. 50 SQ. M.
 TOTAL: 2,508 SQ. FT. 232 SQ. M.

3 BEDROOMS
 3 BATHROOMS
 POWDER ROOM
 PRIVATE TERRACE



PARK



This condominium is being developed by TCH 500 Alton, LLC, a Florida limited liability company ("Developer"), which has a limited right to use the trademarked names and logos of Terra. Any and all statements, disclosures and/or representations shall be deemed made by Developer and not by Terra and you agree to look solely to Developer (and not to Terra and/or its affiliates) with respect to any and all matters relating to the marketing and/or development of the Condominium and with respect to the sales of units in the Condominium. Oral representations cannot be relied upon as correctly stating the representations of the developer. For correct representations, make reference to this brochure and to the documents required by section 718.503, Florida statutes, to be furnished by a developer to a buyer or lessee. These materials are not intended to be an offer to sell, or solicitation to buy a unit in the condominium. Such an offering shall only be made pursuant to the prospectus (offering circular) for the condominium and no statements should be relied upon unless made in the prospectus or in the applicable purchase agreement. In no event shall any solicitation, offer or sale of a unit in the condominium be made in, or to residents of, any state or country in which such activity would be unlawful. The project graphics, renderings and text provided herein are copyrighted works owned by the Developer. All rights reserved. Unauthorized reproduction, display or other dissemination of such materials is strictly prohibited and constitutes copyright infringement. No real estate broker is authorized to make any representations or other statements regarding the projects, and no agreements with, deposits paid to or other arrangements made with any real estate broker are or shall be binding on the Developer.