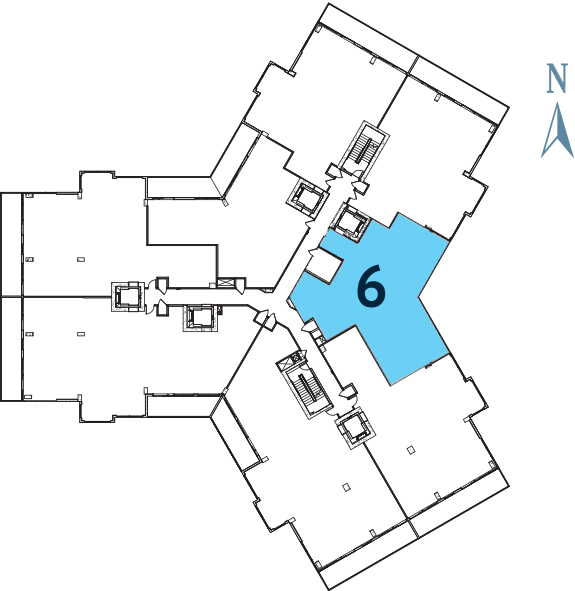


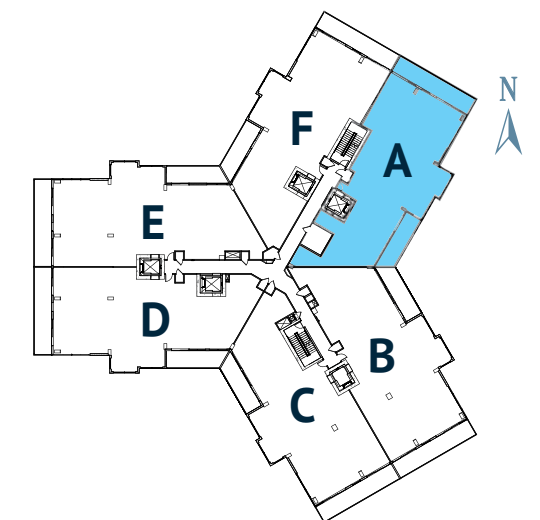
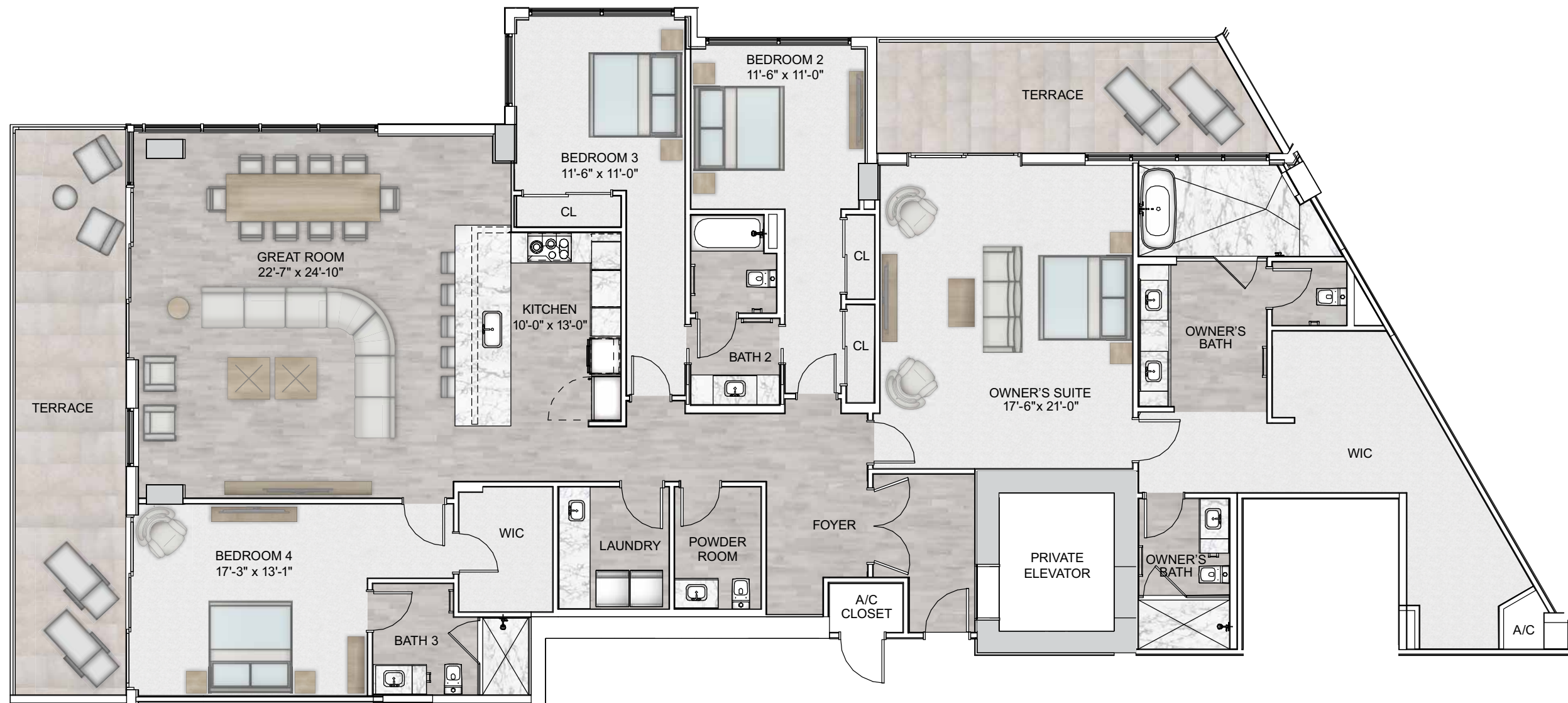


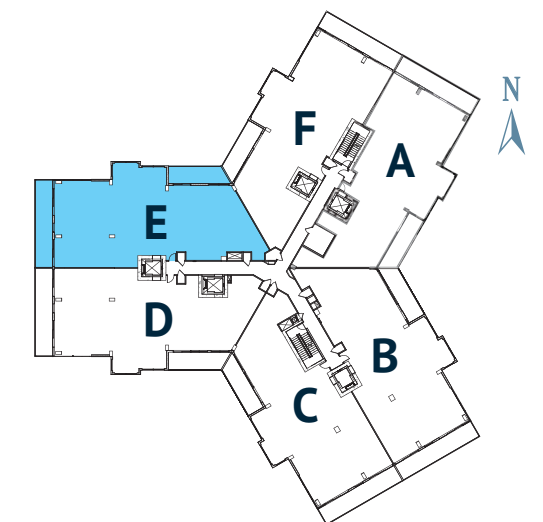
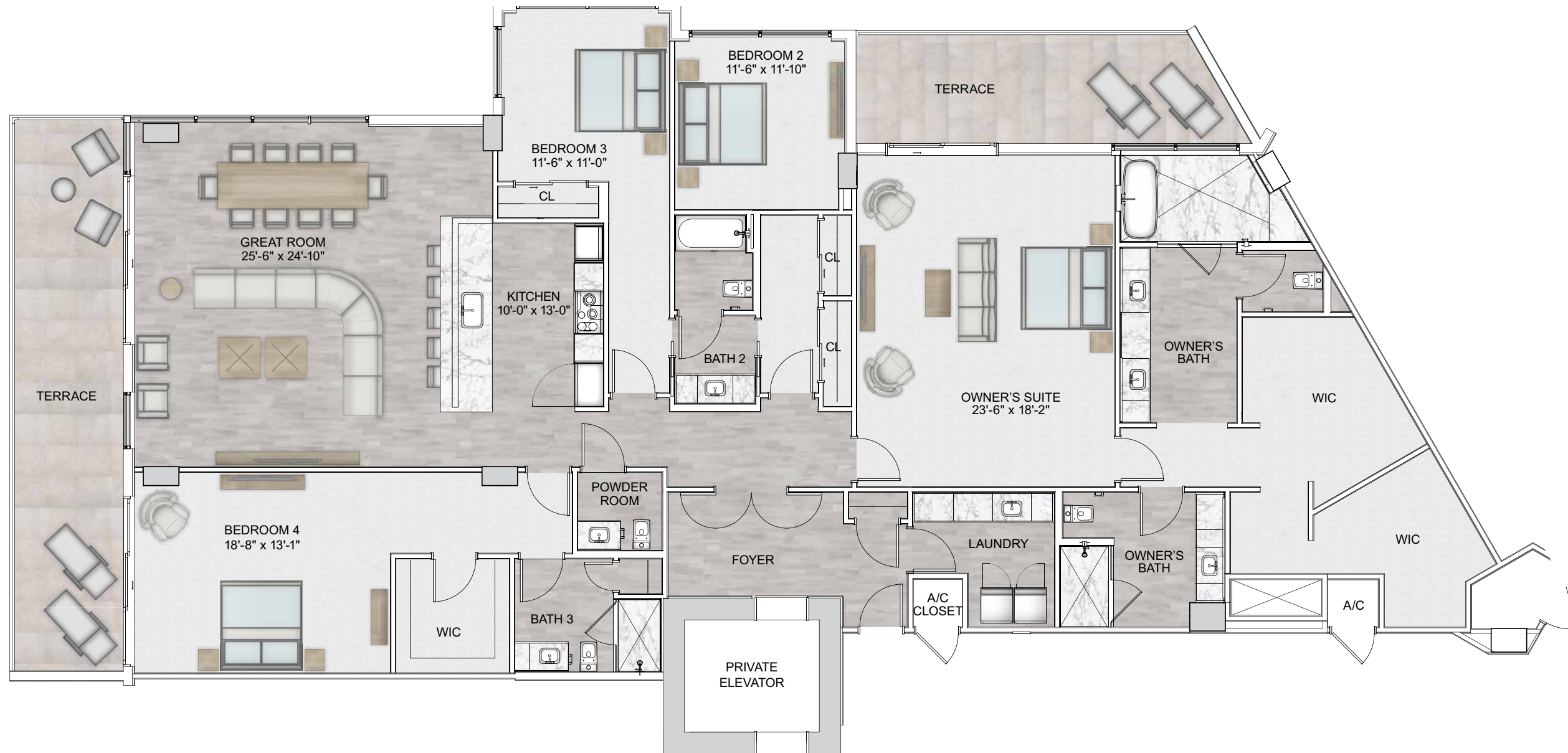
2 BED / 2.5 BATH	
Conditioned	1,831 sq. ft.
Terraces	421 sq. ft.
Total Living	2,252 sq. ft.

Floorplan featured from 9th floor level.



Sketches and illustrations are artist's renderings. Details and field variations are subject to change. All dimensions are approximate and all floor plans and development plans are subject to change. Community features, amenities and pricing are approximate and subject to change without notice. Developer reserves the right to replace with items of equal value. There are various methods for calculating the total square footage of a condominium unit, and depending on the method of calculation, the quoted square footage of a condominium unit may vary by more than a nominal amount. The dimensions stated in this brochure are measured to the exterior boundaries of the exterior walls and the centerline of interior demising walls and, in fact, are larger than the dimensions of the "Unit" as defined in the Declaration of Condominium for Marina Pointe which is measured using interior measurements.







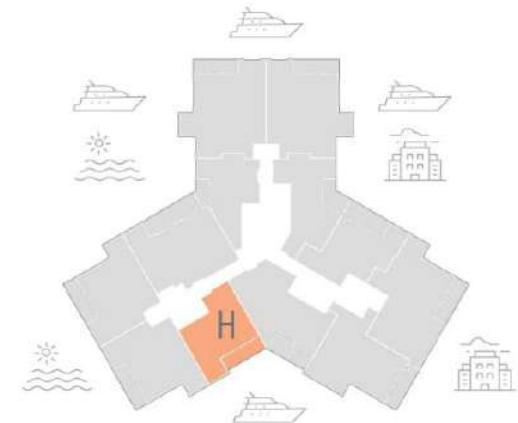
PORTOFINO

2 BEDS / 2 BATHS

Air Conditioned - 1,215 sq. ft.

Terraces - 170 sq. ft.

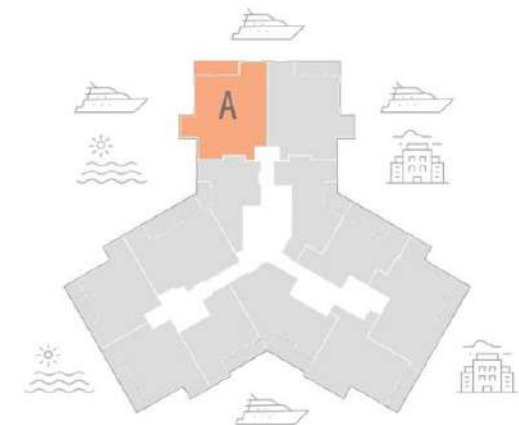
Total Living Space - 1,385 sq. ft.





NICE SALON
2 BEDS / 2.5 BATHS + DEN
Air Conditioned - 1,989 sq. ft.
Terraces - 169 sq. ft.

Total Living Space - 2,158 sq. ft.



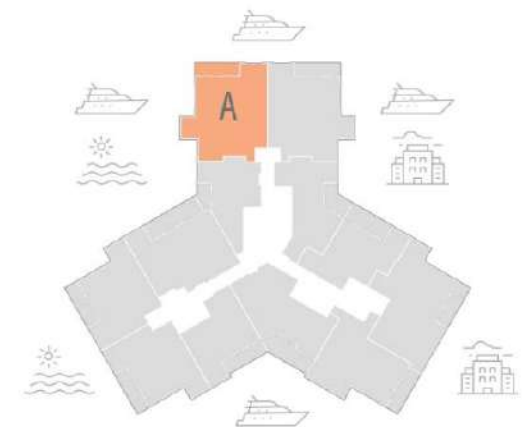


NICE

3 BEDS / 3 BATHS

Air Conditioned - 1,961 sq. ft.
Terraces - 169 sq. ft.

Total Living Space - 2,130 sq. ft.





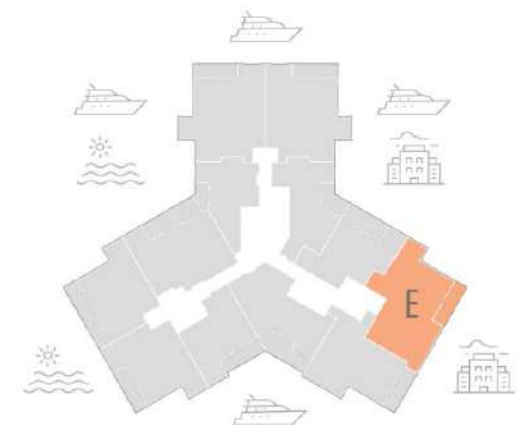
MONTPELLIER

3 BEDS / 3.5 BATHS

Air Conditioned - 2,027 sq. ft.

Terraces - 171 sq. ft.

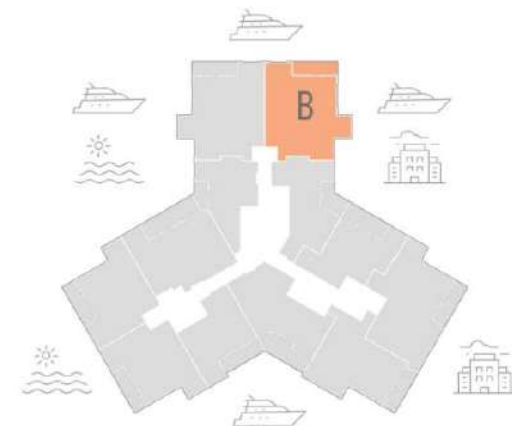
Total Living Space - 2,198 sq. ft.





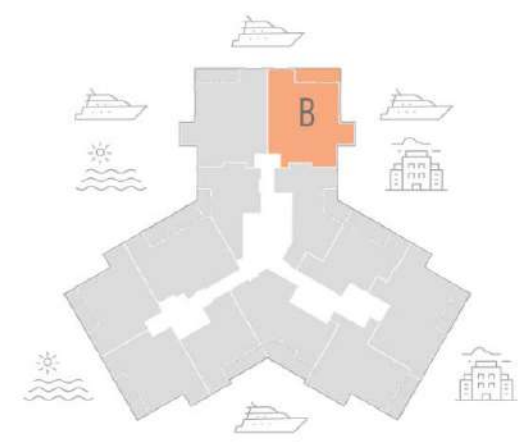
MONACO SALON
2 BEDS / 2.5 BATHS + DEN
Air Conditioned - 1,989 sq. ft.
Terraces - 169 sq. ft.

Total Living Space - 2,158 sq. ft.





MONACO
3 BEDS / 3 BATHS
Air Conditioned – 1,961 sq. ft.
Terraces – 169 sq. ft.
Total Living Space – 2,130 sq. ft.





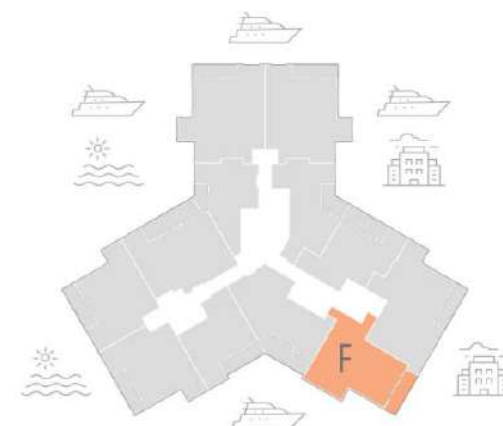
MARSEILLE

2 BEDS / 2.5 BATHS

Air Conditioned - 1,668 sq. ft.

Terraces - 171 sq. ft.

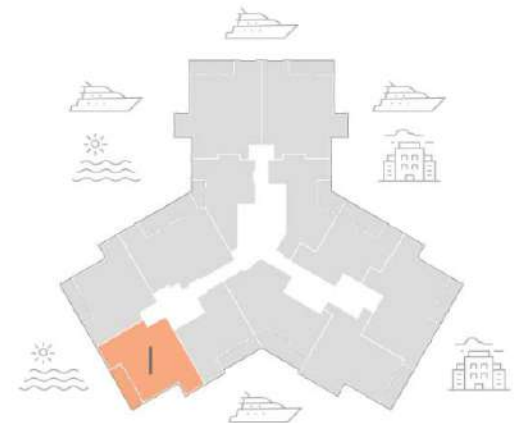
Total Living Space - 1,859 sq. ft.





CORSICA
2 BEDS / 2.5 BATHS
Air Conditioned – 1,523 sq. ft.
Terraces – 171 sq. ft.

Total Living Space – 1,694 sq. ft.





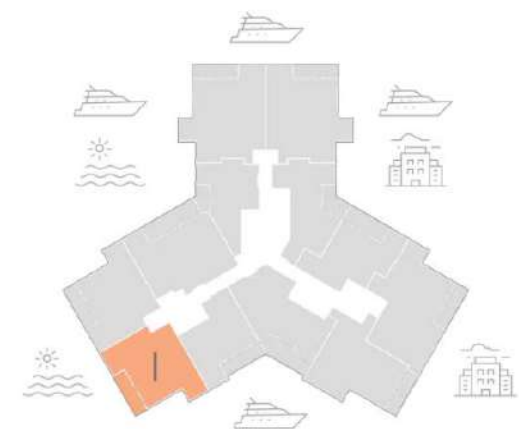
CASSIS

1 BED / 1.5 BATHS + DEN

Air Conditioned - 1,419 sq. ft.

Terraces - 196 sq. ft.

Total Living Space - 1,615 sq. ft.





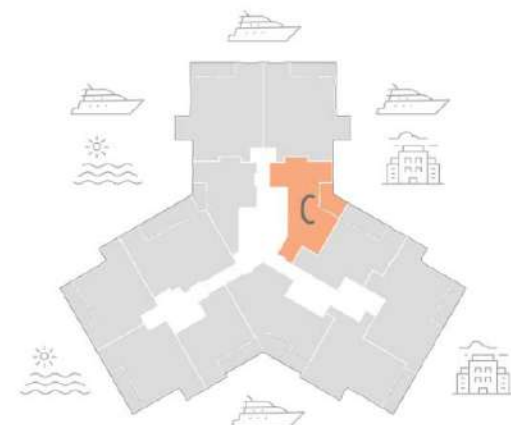
CAPRI

2 BEDS / 2 BATHS

Air Conditioned - 1,323 sq. ft.

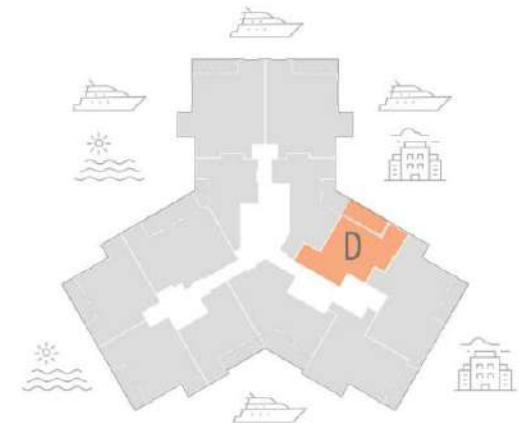
Terraces - 160 sq. ft.

Total Living Space - 1,483 sq. ft.





CANNES
 2 BEDS / 2 BATHS
 Air Conditioned – 1,295 sq. ft.
 Terraces – 219 sq. ft.
 Total Living Space – 1,514 sq. ft.





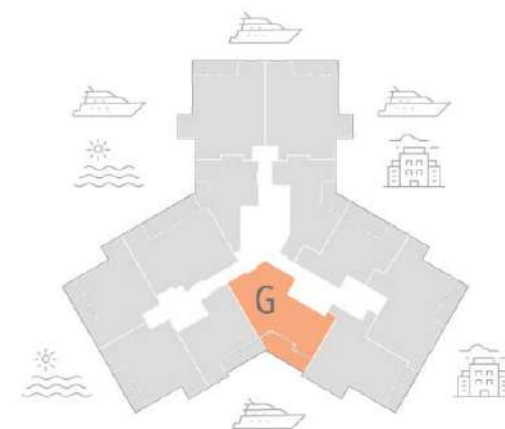
VALENCIA

2 BEDS / 2 BATHS

Air Conditioned – 1,544 sq. ft.

Terraces – 271 sq. ft.

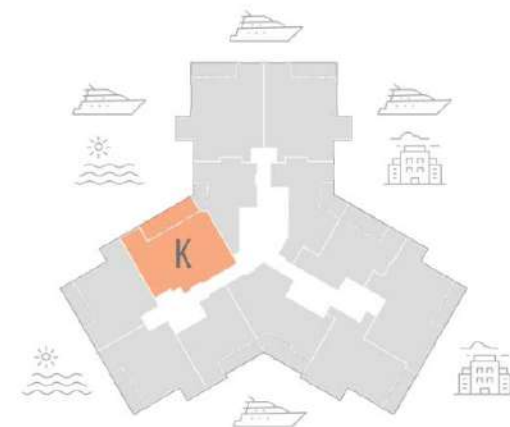
Total Living Space – 1,815 sq. ft.





ST. TROPEZ
3 BEDS / 3 BATHS + DEN
Air Conditioned - 1,727 sq. ft.
Terrace - 290 sq. ft.

Total Living Space - 2,017 sq. ft.





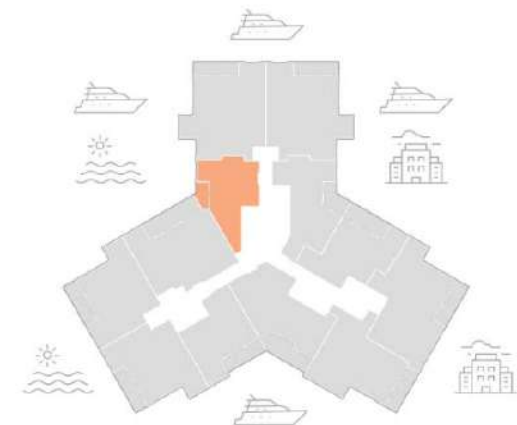
SORRENTO

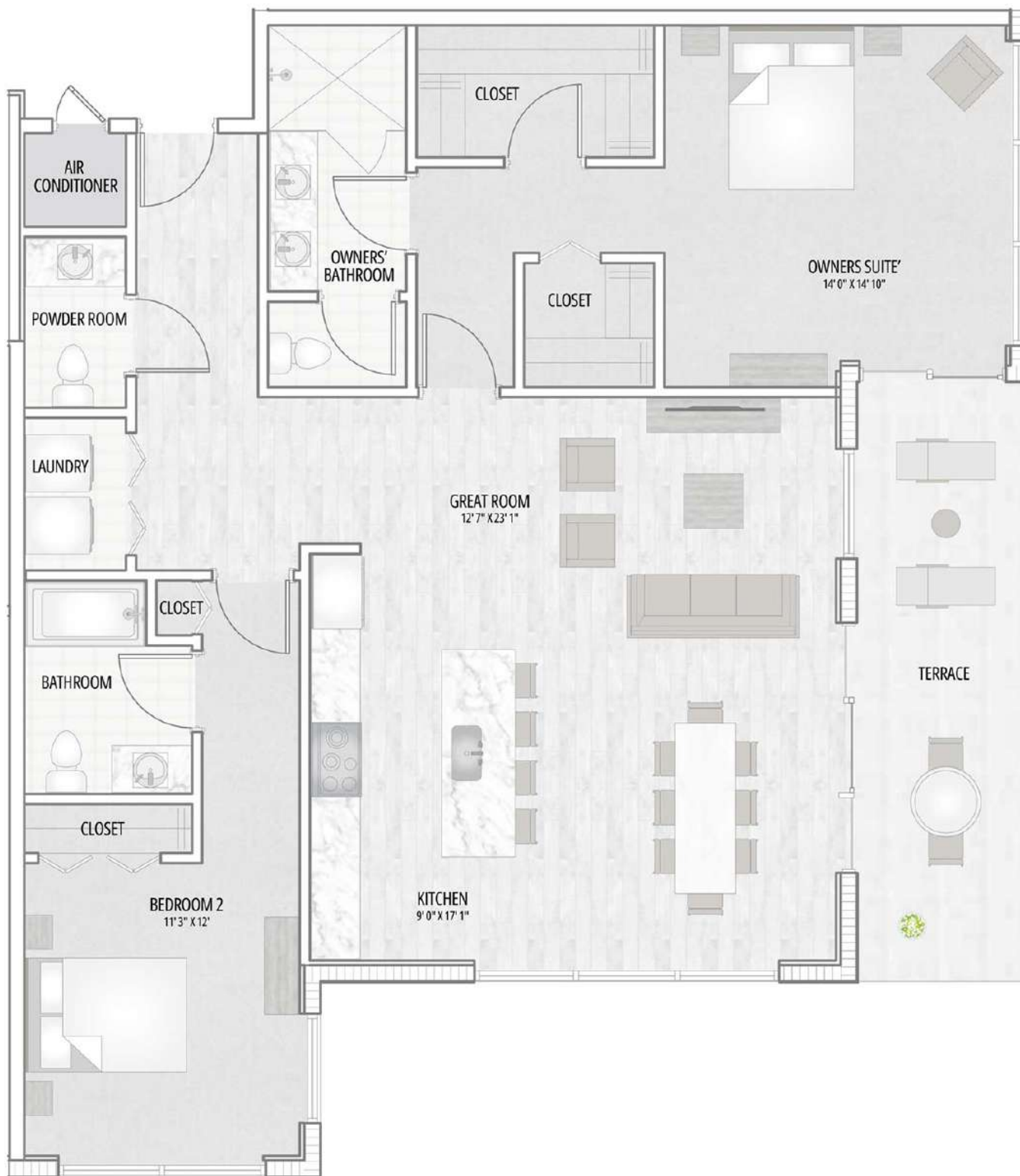
1 BED / 1.5 BATHS

Air Conditioned - 1,133 sq. ft.

Terraces - 92 sq. ft.

Total Living Space - 1,225 sq. ft.





SARDINIA

2 BEDS / 2.5 BATHS

Air Conditioned - 1,523 sq. ft.

Terraces - 171 sq. ft.

Total Living Space - 1,694 sq. ft.

